

200. A quantity of unusual cast iron sunflower railing

2nd half 19th century

86cm high by approximately 11 metres long, together with two cast iron uprights

These unusual and highly decorative railings with extravagant sunflower terminals are reminiscent of the work of the Victorian designer Thomas Jekyll, who designed a pair of andirons with similar sunflower terminals.



£800-1200

201. A quantity of Victorian cast iron railingscomprising five panels, together with **matching gate**

the railings 117cm high by approximately 12m 50cm total length; the gate 145cm high by 100cm wide



£600-1000

202. A pair of Victorian cast iron gates

circa 1860

140cm high by 150cm wide



£200-400

203. A pair of painted wood and iron gates

20th century

122cm high by 108cm wide overall



£250-400

204. A set of six cast iron railing panels

late 19th century

100cm high by 70cm wide

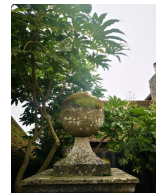


£200-400

205. A pair of composition stone gate pier balls

2nd half 20th century

57cm high



£350-550

206. A 17th century style lead finial

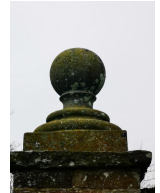
2nd half 20th century
84cm high



£400-600

207. A pair of carved stone gate pier balls

19th century
56cm high



£250-500

208. A Victorian carved stone obelisk finial

circa 1860
137cm high



£250-400

209. A composition stone gate pier ball on pedestal

153cm high



£150-250

210. Three composition stone gate pier balls

38cm diameter



£300-500

211. A set of four carved stone balls

35cm diameter



£400-600

212. A pair of large composition stone balls

53cm diameter



£800-1200

213. A 17th century carved stone gargoyle/bust of a monkey

31cm high by 40cm deep



£500-800

214. A substantial Victorian composition stone finial

2nd half 19th century
on later composition stone plinth
the finial 200cm; 290cm overall



£2500-4000

215. An unusual carved stone keystone of moustachioed man

Low Countries, late 17th/early 18th century
18cm high by 28.5cm wide



£200-400

216. A bronze frieze

late 20th century
comprising seven panels
109cm high by 992cm long by 8cm deep

This bronze frieze along with lots 217 to 219 was recently removed from the world-famous Camden Lock Market in London, which is situated by the Regent's Canal on a site formerly occupied by warehouses and other premises associated with the canal. By the early 1970's the canal trade had ceased, and a northern urban motorway was planned that would cut through the site, making any major permanent redevelopment impossible, and in 1974 a temporary market was established. By 1976, when plans for the motorway were abandoned, the market had become a well-known feature of Camden Town. Originally, the Lock was a market for crafts, occupying some outdoor areas by the canal and various existing buildings. It attracted large numbers of visitors partly due to stalls being open on Sundays, when previous to the Sunday Trading Act 1994, shops were not permitted to operate on Sundays. It is now the fourth-most popular visitor attraction in London, attracting approximately 100,000 people each weekend.

Originally built as a horse hospital which served the horses pulling Pickford's distribution vans and barges along the canal, Camden Stables Market makes up the largest portion of the famous Camden Lock Market complex. Horses injured pulling barges along the canals would come here for treatment and rehabilitation. The Grade II listed stables now house over 450 shops and stalls selling a variety of items from the unique to the exotic. These panels which feature horses being re-shod and blacksmiths in a forge were installed during the extensive renovations of the early 1990's.

Due to its size, the frieze is being offered in 4 lots, however for clients wishing to purchase all four (lot 216 to lot 219), a single bid should be entered for the four and if the bid exceeds the total of the highest bids entered for the individual lots, then that will be the winning bid. Please see our website for videos of the frieze.

£8000-12000

217. A similar bronze frieze

comprising 4 panels
109cm high by 670cm long by 8cm deep

£6000-10000

218. A similar bronze frieze

comprising 7 panels
109cm high by 1050cm long by 8cm deep

£10000-15000

219. A similar bronze frieze

109cm high by 164cm long by 8cm deep

£800-1200

220. An unusual small bronze door knocker in the form of a bird feeding its young

indistinctly stamped *GM* and dated *1934*
11cm high by 10cm wide



£300-500

221. **A similar but unsigned bronze door knocker of a bird pulling a worm**

1930s
9.5cm high by 10cm wide



£200-300

222. **A collection of eight rectangular gilded and moulded walnut ceiling panels**

late 19th century
some elements missing
117cm by 110cm together with a pair of similar panels en-suite, 110cm by 36cm



£600-1000

223. **After the Antique: A British Museum fibreglass classical relief of a scene from the Parthenon**

modern
75cm high by 103cm wide



£200-400

224. **A cast iron stick stand**

20th century
55cm high, together with a bronze eagle finial, 20th century, 52cm high



£300-500

225. **A pair of cast aluminium standing lamps**

each with three lights
305cm high



£300-500

226. **An impressive Murano glass chandelier**

Italian, 1970's
240cm high by 200 wide

Removed from 50 St James's gambling Club, Mayfair
(see website for more images)



£20000-30000

227. A cut glass and gilt metal chandelier

1970s
230cm high by 150cm diameter



£3000-5000

228. A pair of De Majo glass chandeliers designed by Francesco Dei Rossi

Venetian, modern
120cm high by 130cm diameter

(One shown in illustration)

Francesco Dei Rossi was born in Venice in 1962. He obtained his studies at the Art Institute of Venice and the Academy of Fine Arts in Venice. From 1985 he started his working life as a designer and developer. The son of a Master glassmaker, he has continued the centuries old traditions of venetian glassmaking. Each of these chandeliers currently retails for £17,400.



£8000-12000

229. A magnificent and monumental cut glass chandelier

modern
430cm high by 180cm diameter



£15000-25000

230. A set of four glazed iron sectional hand lights

each with top
50cm high by 51cm square



£600-1000

231. A similar set of three hand lights

£450-750

232. A smaller pair of hand lights

45cm high by 45cm square, together with **two spare tops**



£300-500

233. A collection of fifteen lead insurance plaques

largely 19th and 20th century



£100-200

234. An Elizabeth II cast iron post box

62cm high



£100-200

235. A Georgian bronze bell

dated 1775 with clanger
40cm high



£300-500

236. A Victorian cast iron weathervane

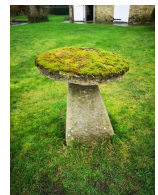
circa 1870
lacking direction indicators
260cm high



£200-300

237. A harlequin set of four staddlestones

average height 64cm



£400-600

238. A pair of terracotta forcers with lids

dated 2001
65cm high, together with **two glazed milk bowls**, 2nd half 19th century
(see website for more images)



£100-200

239. **An early and rare Old Town wood and canvas canoe**

circa 1913

with two pairs of paddles and makers plaque *Decal* and with stamped number 27389
length 550cm; beam 90cm



Old Town Canoe Company is a historic maker of canoes in Old Town, Maine. The company had its beginnings in 1898, in buildings constructed in 1890 for a shoe business, and was incorporated in 1901. Old Town entered the canoe market as a builder of canvas-covered wooden canoes. In the latter half of the 20th century, the company adopted more modern materials to maintain competitiveness. The company's plant was located along the Penobscot River.

The first canoe built by Old Town Canoe was constructed in 1898 behind the Gray hardware store in Old Town, Maine. Unlike the pioneering canoe businesses established by E.H. Garrish, B.N. Morris, and E.M. White, the Grays were not canoe builders themselves, but were entrepreneurs who hired others to design and build their canoes. As it became more well established at the end of the 19th century, Old Town was incorporated in 1901 by brothers George and Samuel Gray, and was run as a family business for decades.

Old Town is the largest and best known American canoe manufacturer. It was the leading manufacturer in the world before competitors such as Grumman pressured it by adopting aluminium for manufacture after World War II. It adjusted by moving to using fibreglass and plastic in the 1960's. This early example bearing the serial number 27389 dates to around 1913.

£500-800

240. **A fairground ride in a form of a Cinderella-type pumpkin carriage**

early 20th century

painted iron

115cm high by 150cm long



£300-500

241. **A Kenrick foundry cast iron boot scraper**

mid 19th century

in the form of a lyre

28cm high, together with another **Victorian boot scraper** with lobed oval tray, 38cm long



A similar Kenrick foundry cast iron boot scraper without tray no. 561 is illustrated in the 19th century Archibald Kenrick & Sons catalogue.

£100-200

242. **A graduated set of four sheet iron lilies with iron supports**

the largest 90cm diameter



£100-200

243. A pair of Sian style bronze drums/stools

modern
50cm wide



£300-500

244. * † A wrought iron Kadai of riveted construction

Indian, modern
on wrought iron stand together with a tripod hanging cooking bowl and two wooden and wrought iron benches en suite
130cm diameter



£1200-1800

245. A bronze Urli

Indian, 19th century
95cm diameter



£1000-1500

246. * † A large wrought iron Kadai of riveted construction

Indian, modern
on iron stand
146cm diameter



£1000-1500

247. A bronze fish

Japanese, Meiji Period (1868-1912)
29cm long



£600-1000

248. * † A pair of carved sandstone thrones

Indian, modern
82cm wide



£1500-2000

249. A bronze crane

Japanese, Meiji Period (1868-1912)
112cm high



£450-700

250. A lava stone lantern

Japanese, 20th century
160cm high



£200-400

251. A simulated porphyry scagliola pedestal

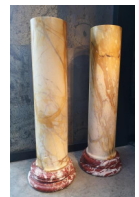
19th century
124cm high



£1000-1500

252. A pair of Sienna and Rosso Cipollino marble column pedestals

19th century
136cm high



£1500-2500

253. A faux marble scagliola pedestal

late 19th century
115cm high



£200-300

254. A composition stone sundial

modern
with 7in plate
100cm high



£200-300

255. A composition stone sundial

1st half 20th century
with *10ins* dial
123cm high



£200-400

256. A pair of Brèche d'Alet marble columns

19th century
lacking socles
94cm high



£300-500

257. A pair of unusual carved white marble pedestals with rose basket tops

late 19th century
77cm high



£200-300

258. * A carved limestone pillar sundial with seat

modern
with bronze gnomens
315cm high by 150cm diameter



£4000-6000

259. A substantial carved stone sundial

modern
with *12in* plate inscribed *Thos. Wright Instrument Maker to His Majesty*
144cm high



£1500-2500

260. * † A large carved limestone and wrought iron rotunda

modern
475cm high by 305cm diameter



£12000-18000

261. A wrought iron octagonal gazebo

last quarter 20th century
336cm high by 336cm wide



£1500-2500

262. A wrought iron gazebo

20th century
incorporating benches
290cm high by 205cm diameter



£500-800

263. * † A carved limestone and oak pergola

modern
250cm high by 350cm wide by 800cm long



£7000-10000

264. * † A wrought iron bridge with wooden slats

492cm long by 156cm wide



£6000-8000

265. A monumental oval composition stone trough

French, mid 20th century
101cm high by 240cm long by 163cm deep



£1200-1800

266. A carved stone trough

50cm high by 156cm long by 86cm deep



£2000-3000

267. A carved stone trough

48cm high by 118cm long by 80cm deep **surmounted by a lead fountain plate**, 88cm wide



£1500-2500

268. A set of three Atelier Vierkant handmade rectangular clay planters

modern

each with maker's stamp

40cm high by 60cm long by 30cm deep, together with a **pair of Atelier Vierkant planters**,

49cm high by 59cm diameter and a **similar Atelier Vierkant handmade clay planter**,

damages, 89cm high by 79cm diameter



£300-500

269. A D-shaped carved limestone trough

25cm high by 60cm wide, together with a **carved stone staddlestone**, 63cm high



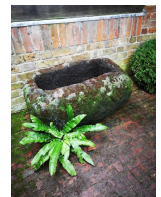
£300-500

270. A near pair of carved lava stone troughs

the larger 46cm high by 88cm long, together with a **shallow square limestone trough**,

19cm high by 55cm square

(see website for more images)

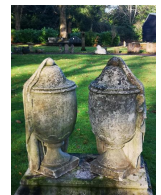


£600-1000

271. A pair of carved limestone draped urns

19th century

68cm high



£600-1000

272. A pair of large composition stone planters

2nd half 20th century

80cm high by 94cm diameter



£400-600

273. A pair of lava stone pots

20th century

54cm high, together with **a similar carved lava stone pot**, 58cm high

£400-600

274. A set of four composition stone pots

20th century

25cm high by 49cm wide



£200-400

275. A pair of composition stone urns on pedestals

2nd half 20th century

168cm high



£2000-3000

276. * † A composition stone Swedish style urn

modern

252cm high



£1000-1500

277. A pair of Victorian carved sandstone urns

circa 1870

on associated tapering octagonal bases

74cm high



£500-800

278. A rectangular composition stone trough

20th century

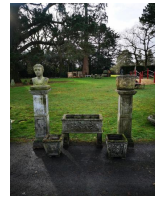
120cm long, together with **two composition stone bird baths and a circular planter**

£200-400

279. A composition stone trough on stand

2nd half 20th century

88cm wide, together with **three other composition stone troughs and planters**, together with **a composition stone bust of a Roman Emperor**, and **a pair of composition stone pedestals**



£250-400

280. A composition stone pot

19th century

120cm high



£800-1200

281. A similar pot

£800-1200

282. A terracotta oil storage jar

Southern Mediterranean, 19th/20th century

100cm high



£250-400

283. A similar larger oil storage jar

109cm high

£300-500

284. A similar oil storage jar

104cm high

£300-500

285. A Lefcoware glazed earthenware bowl on stand

early 20th century

96cm high



£200-400

286. A pair of tazza shape composition stone urns

one on pedestal, the other lacking foot, the larger 120cm high, together with **a scallop shaped birdbath on stand** and **a French cast iron jardiniere**, 60cm wide



£250-400

287. An unusual painted stoneware urn

early 20th century
84cm high



£150-250

288. A Pulham stoneware urn

circa 1870
stamped *Pulham terracotta Broxbourne*
66cm high



£200-400

289. A pair of painted wooden vases

Indian, late 19th/early 20th century
117cm high



£500-800

290. A collection of terracotta planters and a forcer

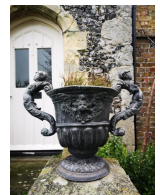
20th century
the largest pair of pots 55cm high



£200-400

291. A pair of William and Mary style lead urns

mid 20th century
48cm high



£300-500

292. A pair of 17th century style lead urns

20th century
50cm high



£250-400

293. Three lead planters

early 20th century
the largest 30cm high by 50cm diameter



£300-500

294. Two washing coppers with handles

19th century
the larger 64cm diameter, together with a **cast iron pump, a brass garden sprayer and a copper and brass vessel**



£250-400

295. Three washing coppers

19th century
including two with handles
the largest 69cm diameter



£300-500

296. Three washing coppers

including one with handles
the largest 83cm diameter



£250-400

297. Three large washing coppers

the largest 76cm diameter



£400-600

298. A circular copper

19th century
with iron handles and later wrought iron stand
89cm wide



£350-500

299. Two riveted washing coppers

19th century

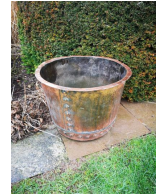
the larger 63cm diameter, **an iron and copper armillary sphere**, 63cm high, **a cast iron pump and a copper vessel with handles**

£250-400

300. A burnished washing copper

19th century

56cm diameter



£250-400

301. David Harber

Chalice

Stainless steel water feature, the centre with sundial on metal stand

74cm high overall by 78cm diameter

£1500-2500

302. David Harber

Chalice

Stainless steel water feature, the centre with sundial on metal stand

74cm high overall by 78cm diameter



£1500-2500

303. A cast iron fountain

20th century

254cm high by 116cm diameter



£500-800

304. A Georgian style lead cistern

2nd half 20th century

bearing the date *1780* and the initials *WH*

65cm high by 96cm long by 53cm deep



£600-1000

305. A Georgian style lead cistern

2nd half 20th century

bearing the date *1776*

70cm high by 92cm wide by 51cm deep



£600-1000

306. A Georgian style circular cistern planter

bearing the date 1757
49cm high by 73cm diameter



£450-750

307. After Verrocchio: A lead fountain figure of a cherub holding a fish

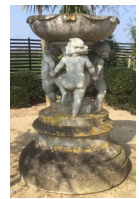
2nd half 20th century
plumbed for water
60cm high



£400-600

308. A carved limestone fountain

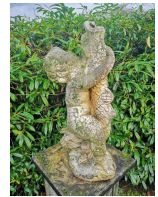
Northern European, late 19th century
178cm high



£6000-8000

309. A composition stone fountain figure of a putto and a fish

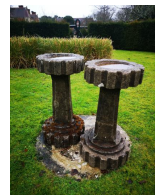
20th century
plumbed for water
82cm high



£150-200

310. An unusual composition stone Art Deco birdbath

2nd quarter 20th century
74cm high



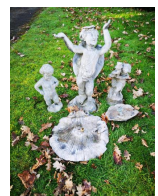
£200-400

311. A similar birdbath

£200-400

312. A lead bird bath in the form of a putto holding aloft a shell

early 20th century
70cm high, together with a smaller lead fountain, 43cm high and a lead figure of a boy,
40cm high



£200-400

313. An unusual and rare lead fountain mask

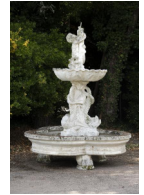
French, 19th century
80cm high by 84cm wide



£400-600

314. A composition stone fountain

2nd half 20th century
250cm high by 180cm wide



£1000-1500

315. A composition stone single tier fountain

modern
154cm high by 130cm diameter



£2000-3000

316. An onyx fountain

together with stand reservoir and pump
104cm high



£3000-4000

317. A similar onyx fountain

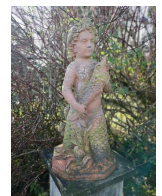
104cm high



£3000-4000

318. A terracotta fountain figure of a mer-child

Italian, early 20th century
drilled for water
80cm high



£500-800

319. An unusual strapwork bench

mid 19th century
180cm wide



£300-500

320. A strapwork curved iron seat

late 19th century
240cm long



£300-500

321. A wrought iron strapwork seat

early 20th century
187cm wide



£500-800

322. A Regency reeded wrought iron seat

early 19th century
164cm wide



£500-800

323. A Regency reeded wrought iron seat

faults and old repairs
167cm wide



£200-400

324. A pair of wrought iron and wooden slatted seats

circa 1900
183cm long



£250-450

325. A wrought iron seat

2nd half 20th century
122cm wide



£150-250

325A. A pair of wirework seats

early 20th century
172cm wide



£1000-1500

326. A rare suite of wrought iron Arras furniture

early 20th century
comprising table and four chairs, each with maker's stamp *Grassin Brevete S.G.D.G Arras*
table diameter 80cm



£400-600

327. An unusual wrought iron conversation rocking chair

112cm wide



£400-600

328. A pair of wrought iron reclining chairs with hinged footrest

2nd half 20th century
with wooden arm rests



£300-500

329. A cast iron rectangular table

2nd half 20th century
92cm wide, together with a **composition stone bird bath**, 80cm high



£200-300

330. A painted hardwood Lutyens style seat

late 20th century

166cm wide, together with a **painted Lutyens style seat**, 2nd half 20th century, 150cm wide and another **painted hardwood seat**, 181cm long



£500-800

331. A Lutyens style wooden seat

2nd half 20th century

166cm wide



£150-250

332. A Chinese Chippendale style wooden seat

2nd half 20th century

150cm wide



£200-400

333. A pair of hardwood sun loungers

£200-400

334. A carved oak seat

modern

of pegged and dowel construction

196cm high



£1200-1800

335. A teak root throne bench

Unique

180cm high by 200cm wide by 120cm deep



£600-800

336. An unusual wrought iron hanging tree seat

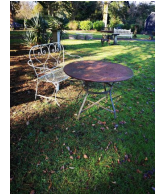
240cm high



£400-600

337. A wrought iron seat

French, 1st half 20th century

123cm wide, together with a **wrought iron and sheet metal table**, 20th century, 100cm diameter

£300-550

338. A suite of Coalbrookdale style furniture

late 20th century

comprising seat and two chairs

the seat 140cm wide



£500-800

339. An iron mounted wooden threshing table

19th century, possibly Scandinavian

44cm high by 185cm long



£800-1200

340. A circular topped table incorporating 1930's aircraft pistons

80cm high by 102cm diameter



£1000-1500

341. A root wood table with glass top

180cm diameter



£150-250

342. A suite of hardwood furniture

modern comprising table and five chairs



£400-600

343. An ebonised wood Tiki bar

together with two stools
130cm wide

The history of the Tiki Bar can be traced back to 1934 when Texas born Earnest Raymond Beaumont Gantt also known as Don the Beachcomber opened the works first Tiki bar in Los Angeles. He wanted to emulate the laid-back time he had experienced in the tropics. People including celebrities of the day flocked to the bar for its escapist ambiance and potent tasty rum cocktails.



£400-600

344. A hardwood ship breaker table

early 20th century
with indistinct makers plaque
84cm square



£80-120

345. A grey veined marble table

modern
on carved limestone supports
251cm long by 100cm wide



£1800-2500

346. * † A pair of Sienna marble Neo Classical style stools

modern
44cm high by 58.5cm wide by 41.5cm deep



£2000-3000

347. A carved limestone bench

modern
200cm long



£800-1200

348. An unusual white leather mounted coffee table

modern
with three drawers one fitted with a copy of Bond and Beyond by Terry O'Neill under a glazed panel
130cm by 90cm

The book Bond and Beyond by Terry O'Neill is a limited edition of 1000 copies signed by the photographer and number 466 it feature iconic stills from Bond movies over the years and was published in 2015 by F J Blissett & Co. London (*See web site for additional images*)



£1500-2500

349. A bronze coffee table

modern
with agate Brazilian onyx slabs on bronze stand
51cm high by 120cm wide by 64cm deep



£1500-2500

350. A rare Northamptonshire skittles game

early 20th century
with painted wooden frame and upholstered in leather together with skittles and cheeses
136cm long by 95cm wide



£350-550

351. • ▲ April Young: Glazed pottery Siamese fighting fish in early 18th century walnut chest on stand

183cm high by 110cm wide by 61cm deep

April Young is an established British sculptor producing expressive, figurative pieces in a variety of materials from clay to foundry bronze.

As well as being held in private collections in the UK, Ireland, Germany, Holland, the United States and New Zealand, her work has gallery representation throughout England, Scotland and Ireland, including at major regional Art Fairs such as AAF London, Art Ireland and Glasgow Art Fair each year.

April has participated in many mixed exhibitions including at the Royal Academy in Bristol. Her sculptural work was most recently selected for the 'Handmade in Britain' Show along with eight other artists at the British Embassy in India.



£3000-5000

352. A rare Lavochkin V-751 experimental flying laboratory

1960

titanium, stainless steel and aluminium

10.9 metres long



This is a two stage rocket with an initial solid fuel rocket booster which burned for four seconds and a second stage liquid fuel engine that burnt for a further 22 seconds. This enabled the craft to reach altitudes of 66,000 feet and speeds of Mach 3, the range could be up to 22 miles. This rocket is part of the S-75 family of rockets which were developed in the late 1950's in response to combat America's long range bombers. The S-75 and its many variants provided much of the air defence of the Soviet Union and numerous other countries which adopted it. Perhaps its most famous moment was the shooting down of Gary Powers U-2 spy plane in 1960.

£8000-12000

353.

The following 2 lots, provide a historical link with the Cold War which existed between the Soviet bloc countries and the Western powers between 1945 and 1990.

A clash of very different beliefs and ideology - capitalism versus communism - each held with almost religious conviction, forming the basis of an international power struggle with both sides vying for dominance, exploiting every opportunity for expansion anywhere in the world. Propaganda formed a major weapon, especially for the Communist bloc countries whose press was heavily censored and whose leaders, especially Joseph Stalin established a virtual cult demanding absolute belief in the ideals of the state. The figure of Vasily Ivanovich Chapaev, added to the roof of the Communist Party Headquarters and placed there shortly after the establishment of Communism in Czechoslovakia are a testament to the USSR's attempts to indoctrinate the local population.



The Cold War was to dominate international affairs for decades and many major crises occurred; the Cuban Missile Crisis, Vietnam, Hungary and the Berlin Wall being just some. For many, the growth in weapons of mass destruction was the most worrying issue. This rocket is part of the S-75 family of rockets which were developed in the late 1950's in response to combat America's long range bombers. The S-75 and its many variants provided much of the air defence of the Soviet Union and numerous other countries which adopted it. Perhaps its most famous moment was the shooting down of Gary Powers U-2 spy plane in 1960.

It is now 25 years since the fall of the Iron Curtain and although those who lived through the Cold War years did so in a permanent fear of global annihilation by nuclear weapons, we now look back with feelings bordering on nostalgia. These two lots provide an unprecedented opportunity to acquire some rare icons all historically associated with this seminal period of mid 20th century world history.

A monumental carved sandstone figure of Vasily Ivanovich Chapaev

mid 20th century
250cm high

The following lot originally stood on the roof of the Communist Party Headquarters in Prague, and was removed following the 'Velvet Revolution' of 1991.

In 1950 a set of six statues were commissioned of which this is one. Each was carved from a two ton block of sandstone, and since Czechoslovakia had recently become a Communist satellite, they fulfilled a primarily propaganda role in glorifying the exploits of the October 1917 revolution.

Given pride of place on the parapet of the Communist party headquarters, which later became the Lenin Museum, they were carved collectively by three of the leading Czechoslovakian sculptors of the time, Svata Hajerova, Irena Sedlecka and Ludvig Kodym. All three were awarded the prize of City of Prague and were Laureates of the State Prize for previous achievements. Of the three, Irena Sedlecka is the only one still living. She went on to become a well-known sculptor in the West.

Born in 1928 in Plzeň, Czechoslovakia, she studied at the Academy of Fine Arts in Prague and was awarded the Lenin Prize for sculpture before fleeing the communist regime in 1967.

Her first private commission in Britain, in 1975, was from Kathleen Hunt of Walthamstow, for a 70cm resin statue of the Virgin Mary and the baby Jesus (The Madonna). She has sculpted many monumental portraits and busts since, including Freddie Mercury of Queen, now in Montreux, Switzerland; Beau Brummell in Piccadilly, London, and many in private collections. (Her statue of Mercury served as a model for the large illuminated statue that currently dominates the front of the Dominion Theatre in London since the May 2002 premiere of the musical, We Will Rock You.)

Commissioned portrait heads include Laurence Olivier (she also modelled the huge head used for his appearance in Dave Clark's musical Time at the Dominion Theatre), Donald Sinden, Paul Eddington, Richard Briers, Jimmy Edwards, Ted Moulton, Bobby Charlton, Lord Litchfield and Sir Frank Whittle. In August 1992 her work was shown at the Czech Embassy in London as part of an exhibition devoted to the work of five distinguished Czech émigré sculptors.

She has been married several times, lastly to the sculptor Franta Belsky, who died in 2000. In late 2010, visual artist Aleksandra Mir befriended Sedlecká. A series of interviews in the following spring led to the publication of a monograph on Sedlecká's life and work together with an unsolicited proposal of bringing the statue, now exiled in Montreux, back to

354. A carved limestone figure of a hunter

possibly Eastern French or German, circa 1870
the stag with natural antlers, the huntsman with specimen marble cabochon decoration
170cm high



£1500-2500

355. A composition stone figure of a fisher boy seated on a rocky outcrop

2nd half 20th century
143cm high



£600-1000

356. After Michelangelo: A composition stone figure of David

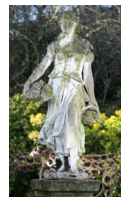
Italian, 2nd half 20th century
164cm high



£500-800

357. A composition stone figure of a peasant girl with grapes

2nd half 20th century
140cm high



£500-800

358. A composition stone owl on pedestal

modern
160cm high overall



£300-500

359. A composition stone group of two playing putti

2nd half 20th century
125cm high



£700-1000

360. **A set of three composition stone putti representing Spring, Autumn and Winter**
84cm high



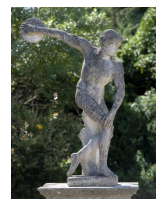
£1000-1500

361. **A composition stone figure of a cherub playing a harp**
2nd half 20th century
100cm high



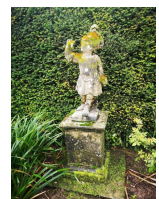
£200-400

362. **After the Antique: A composition stone figure of the discus thrower**
2nd half 20th century
158cm high



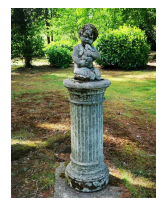
£500-800

363. **A composition stone figure of a putto in 17th century style armour on pedestal**
2nd half 20th century
166cm high, together with a pair of composition stone planters, 2nd half 20th century,
33cm high
(see website for more images)



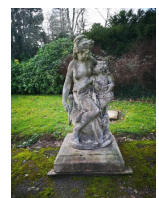
£450-650

364. **A composition stone figure of a child holding a rabbit on fluted column pedestal**
2nd half 20th century
132cm high



£200-400

365. **A composition stone group of Venus and a putto**
2nd half 20th century
130cm high



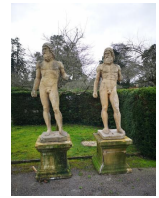
£800-1200

366. A composition stone Riace Warrior

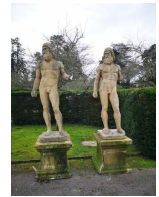
mid 20th century
on associated composition stone plinth
252cm high overall

The Riace Warriors are two full-size Greek bronzes of naked bearded warriors, cast about 460-450 BC that were found in the sea near Riace in 1972. The bronzes are in the Museo Nazionale della Magna Grecia in the southern Italian city of Reggio Calabria, Italy.

They are two of the few surviving full-size ancient Greek bronzes (which were usually melted down in later times), and as such demonstrate the superb technical craftsmanship and exquisite artistic features that were achieved at this time.



£1500-2500

367. A similar composition stone Riace Warrior

£1500-2500

368. After Canova: A pair of composition stone reclining lions

2nd half 20th century
56cm high by 122cm long



£500-800

369. A set of four carved white marble figures representing the seasons on pedestals

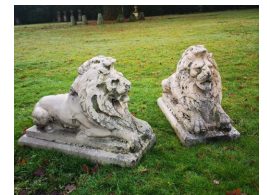
modern
204cm high overall



£3000-5000

370. A pair of composition stone lions

2nd half 20th century
54cm high by 73cm long



£300-500

371. After Jacquemart: A pair of composition stone dogs

modern
90cm high



£1000-1500

372. A pair of carved limestone figures of putti representing Art and Sculpture

2nd half 20th century
94cm high



£800-1200

373. An unusual composition stone figure of a deer

2nd half 20th century
155cm high



£1200-1800

374. A pair of composition stone seated lions

2nd half 20th century
63cm high, together with a **composition stone urn on pedestal**, 2nd half 20th century,
90cm high



£400-800

375. A composition stone deer

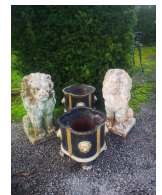
modern
with lead antlers
96cm long



£500-800

376. A pair of terracotta lions

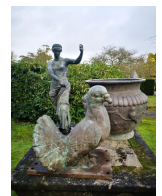
2nd half 20th century
52cm high, together with a **pair of lobed circular cast iron small planters**, 20th century,
26cm high



£150-250

377. A bronze figure of Venus

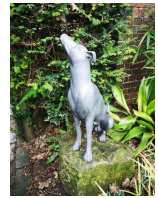
Italian, circa 1900
43cm, together with a **Japanese bronze bowl**, 26cm high and a **bronze pigeon**, 25cm long



£200-400

378. A lead figure of a dog

2nd half 20th century
70cm high



£300-500

379. A bronze figure of a crested crane

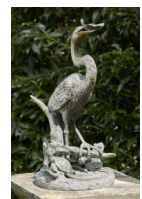
20th century
118cm high



£300-500

380. Jim Ponter: A bronze fountain group of a crane, fish, terrapin and frog

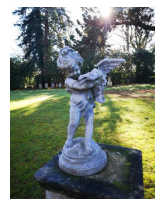
plumbed for water, signed *Jim Ponter*
60cm high



£1000-1500

381. A lead fountain figure of a girl with a bird

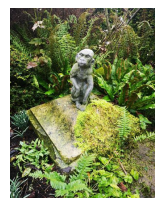
63cm high



£200-400

382. A lead monkey

2nd half 20th century
now mounted on earlier gate pier cap
64cm high overall



£200-400

383. An unusual lead figure of a boy

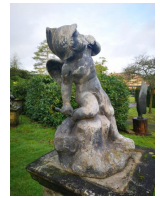
1920s
70cm high



£200-400

384. A lead figure of the young cupid

early 20th century
57cm high



£300-500

385. An unusual terracotta bust of a woman

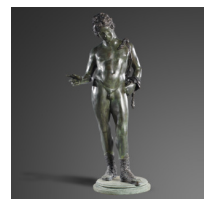
18th century or earlier
70cm high



£800-1200

386. After the Antique: A bronze figure of Narcissus on marble base

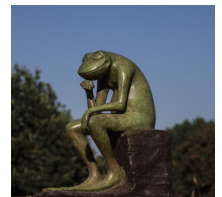
modern
174cm high



£1200-1800

387. David Meredith

The thinker frog
Bronze
30cm high by 27cm wide by 17cm deep



£600-800

388. A carved marble stylised bird

modern
22cm high



£200-300

389. A cast iron cockerel

modern
154cm high



£400-600

390. **A carved white marble stylised bird**

modern
26cm long



£150-250

391. **A carved alabaster stylised bird on black marble base**

modern
23cm high



£150-250

392. **Simon Chidharara**

Relaxing cat
Serpentine stone
Unique
7.5cm high by 15cm wide by 13cm deep



£200-300

393. • **▲ Guy Taplin (b1939)**

Goose Head II
1998
Patinated Bronze
Signed, titled and numbered 2/25
20cm



Guy was born in 1939 in the East End of London on the eve of World War Two. His love affair with birds started as a young boy, inspired during a country walk in Hereford with his mother.

After leaving school he had a number of menial jobs before working as a bird keeper in Regent's Park while training to become a Buddhist monk. In the park, Guy remembers "I used to look after the ducks in the park and saw all these decoy ducks in the antique markets. I thought 'I could make some of these' - somebody came into the park and asked if they could have a few and it took off." So, in 1975 he began carving birds and four years later he dedicated his full time to fine art.

His first show at the Portal Gallery was an enormous success and everything sold. His Essex workshop sits on a beach at the head of two tidal estuaries, the Blackwater and the Colne. Surrounded by birds and deposited driftwood Guy is in his element. Guy looks for wrecked boats, flotsam and jetsam, broken jetties and dunnage from passing cargo boats to make his sculptures. He finds that this kind of material has a special significance because it has had a life before he creates his bird forms. Weathered by time and the elements, each piece of wood bears marks that enhance his design, suggesting the outline of a wing or layers of plumage. His work is now also cast in bronze, bringing it to a wider audience.

He has exhibited internationally, and his fans include Joanne Lumley, Ridley Scott and Michael Palin.

£600-1000

394. • **▲ Guy Taplin (British, born 1939)**

Coot
Carved wood of plain naturalistic form
Signed to the base
18.5cm long



£250-400

395. • **▲ Ev Meynell**

Eagle
Patinated fibreglass
120cm high by 184cm wide



Ev Meynell was born in 1950 and educated at Oxford University. His family had close links with sculptor Eric Gill in the 1920's and it was this relationship which inspired and encouraged Ev to embark on a career as a sculptor. His work can be viewed at various locations including: RHS Wisley; Borde Hill Garden and Pashley Manor Gardens, with a special display on Herm in the Channel Islands.

£200-400

396. **Dove in hands**

Bronze
30cm high by 49cm wide by 32cm deep



£1200-1800

397. **Kare Meleney Green**

Swan
Hand beaten copper
Unique
46cm high by 87cm wide by 76cm deep



£2000-4000

398. **Running goose**

Bronze
44.5cm high by 73cm wide by 22cm deep









£800-1200

399. **Steve Langford**

Wren on a branch
Bronze
Signed
15cm high by 30cm wide by 5cm deep

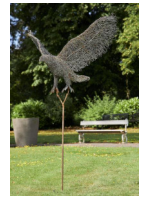


£300-500

400. **Lying Hare**
Bronze
24cm high by 31cm wide by 26cm deep
- 
- £200-400
401. **Steve Langford**
Robin on a branch
Bronze
Signed
25cm high by 13cm wide by 13cm deep
- 
- £300-400
402. **Phillip Hearsey**
Avian II
Signed 7 of 8
Bronze on wooden base
19cm high by 16cm wide by 11cm deep
- 
- £800-1200
403. **Pelicans in flight**
Bronze
43cm high by 37cm wide by 35cm deep
- 
- £600-800
404. **Eagle**
Bronze on marble
Signed
30.5cm high by 15cm wide by 14cm deep
- 
- £400-600
405. **Frog vase**
Glass
Unique
45cm high by 31cm wide by 22cm deep
- 
- £200-300

406. • ▲ **Laura Antebi**

Eagle in flight
Galvanised steel wire and bronzed copper
200cm high, wingspan 130cm wide



£1000-1500

407. **Chitiyo**

Quail family
Springstone
Unique
10cm high by 11cm wide by 17cm deep



£200-300

408. **An iron cheetah constructed from simulated horseshoes**

modern
230cm long by 104cm high



£1000-1500

409. **A similar cheetah**

£1000-1500

410. **Frog head**

Bronze resin
16cm high by 35cm wide by 24.5cm deep



£200-300

411. **Maria Bayardo**

Bulls
Bronze on corten steel base
Signed and numbered 1 from an edition of 8
34cm high by 44cm wide by 28cm deep approx



£5000-8000

412. Baby Elephant

Bronze
70cm high by 51cm wide by 21cm deep



£800-1200

413. Lyle Sopel (Canadian b 1952)

Carving of two ducks flying
Green nephrite on stone base
Signed *Sopel F033*
Unique
44cm high by 34cm wide by 22cm deep



£800-1200

414. Alex Jones

Death's-head Hawkmoth
Oak, limewood and maple
Unique
165cm high by 360cm wide by 78cm deep



£20000-30000

415. Alex Jones

Small tortoiseshell butterfly
Cherry, oak and maple
Unique
90cm high by 60cm wide by 26cm deep



£6000-8000

416. Jennifer Lowe

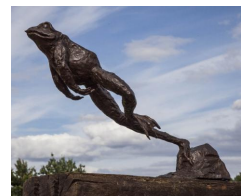
Three Gecko Lizards
Stoneware ceramic
Signed
Unique
24cm high by 30cm wide by 43cm deep



£300-500

417. John Cox

Leaping frog
Bronze with foundry stamp
55cm high by 73cm long



£600-800

418. Blue sharks

Bronze on marble plinth
Signed *Wyland 1999*
Edition 202 of 300
25cm high by 33cm wide by 23cm deep



£1000-1500

419. John Cox

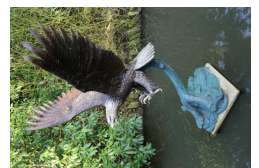
American bald eagle
Bronze
190cm high by 190cm wide by 70cm deep



£6000-8000

420. John Cox

American fish eagle
Bronze
205cm high by 145cm wide by 110cm deep



£6000-8000

421. Colin Kellam

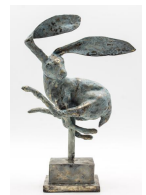
Vulture
Stoneware
Unique
70cm high by 32cm wide by 31cm deep



£600-800

422. Bounding hare

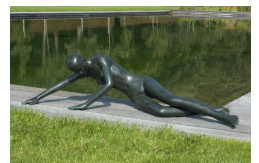
Bronze with silvered patina
36cm high by 25cm wide by 13cm deep









£200-300

423. Patricia Peeters, Born 1964

End Dance
Bronze
Signed and numbered from an edition of 150
34cm high by 138 cm long by 31cm deep



£2000-3000

424. **Tracy Chatsama**
Proud Parent
Opal stone
Unique
26.5cm high by 16cm wide by 20cm deep
- 
- £400-600
425. **Sarah Lewington**
Boxing hares
Bronze
Signed and numbered from edition of 9
183cm high by 141cm wide by 40cm deep
- 
- £20000-30000
426. **Intertwined cranes**
Bronze
Modern
170cm high
- 
- £800-1200
427. **Yuelong Shi**
Emerging II
Marble
Unique
Sculpture 109cm high by 115cm wide by 62cm deep
- 
- £4000-6000
428. **Chris Mungandaira**
Male Torso
Springstone
Unique
Signed
146cm high by 94cm wide by 53cm deep
- 
- £2000-3000
429. **Chris Mungandaira**
Female Torso
Springstone
Unique
Signed
126cm high by 128cm wide by 70cm deep
- 
- £2000-3000

430. Victor Matafi

Knot
Springstone
Signed
Unique
203cm high by 65cm wide by 50cm deep



£6000-8000

431. Attributed to Paul Vanstone

Marble torso from the Cloth range, 2004
64cm high by 66cm wide

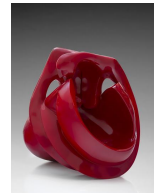
Paul Vanstone studied sculpture at Central St. Martins School of Art before completing an MFA in sculpture at the Royal College of Art, from which he graduated in 1993. Following his graduation Vanstone worked in Italy at the traditional marble carving studios near the famous Carrera quarries. He also spent time working in Berlin and has travelled to Rajasthan to learn India's traditional marble carving techniques. On his return to the UK, and for the next five years, Vanstone became an assistant to leading British sculptor, Anish Kapoor. Consequently, works carved by Vanstone on Kapoor's behalf have been exhibited at world leading galleries, including the Tate Modern, London.



£800-1200

432. Maria Bayardo

Mecedora
Resin
Signed edition II of IV
160cm high by 180cm wide by 150cm deep



£6000-8000

433. Bywell Sango

Success Story
Cobalt stone
Unique
Signed
170cm high by 145cm wide by 40cm deep



£6000-8000

434. Ann Vrielinck

Hug
Bronze
Signed
Edition of 99
41cm high by 17cm wide by 10cm deep



£800-1200

435. Guido Deleu

Extra large Visitor
Bronze
Signed from an edition of 75
180cm high

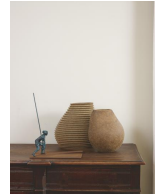
After retiring from a professional career as a civil engineer Guido Deleu attended the Academy of Art in Roeselare to develop his passion for art and sculpture. He then further studied at a workshop in Carrara Italy to focus on sculpture techniques in marble.



£16000-20000

436. Jacques Vanroose

Trace
Bronze on corten steel base
Signed and numbered from edition of 75
40cm high by 30cm wide by 15cm deep



£400-600

437. A pair of silvered metal cavaliers in 17th century dress

late 19th century
with replaced glass globe heads
62cm high



£400-600

438. Nineteen

Bronze with a variegated green patination
82cm high by 56cm wide



£1200-1800

439. ▲ Olwen Gillmore

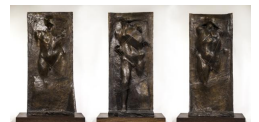
See-saw
Bronze
Signed
178cm high by 240cm wide by 67cm deep



£4000-6000

440. Michael Ayrton (1921-1975)

Emerging figure triptych
Bronze on wood plinth
Executed in 1966
each 97cm high by 57cm wide by 28cm deep



£30000-40000

441. **Kenny Roach**

Doorway to Heaven
Wood and steel
Unique
230cm high by 110cm wide by 30cm deep



£4000-6000

442. * † **Zenith**

Stainless steel
400cm high



£4000-6000

443. * † **A pair of obelisks**

Stainless steel
90cm high



£1500-2500

444. • ▲ **Jenny Pickford**

Fluidity
Galvanised forged steel and blown glass
250cm high



£1200-1800

445. **Infinity curve**

Stainless steel
55cm high by 40cm wide by 32cm deep



£1000-1500

446. **A Quartz prism**

Madagascar
on metal stand
19cm high



£150-250

447. A polychrome jasper freeform

Madagascar
17cm high



£150-250

448. A red jasper freeform

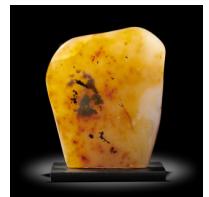
Madagascar
18cm high



£150-250

449. An agate freeform

Madagascar
13cm high



£150-250

450. A quartz freeform

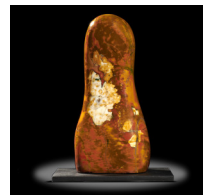
Madagascar
on metal stand
19cm high



£150-250

451. A jasper freeform

Madagascar
22cm high



£150-250

452. A labradorite freeform

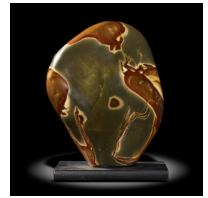
Madagascar
14cm high



£150-250

453. A polychrome jasper freeform

Madagascar
17cm high



£150-250

454. A massive imperial jasper freeform

Madagascar
58cm high



£4000-6000

455. A jasper freeform

Madagascar
20cm high



£200-300

456. An aragonite specimen

Moroccan
41cm wide



£600-800

457. A septarian sphere on wood and brass base

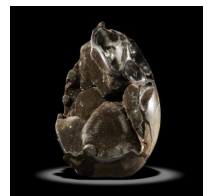
Madagascar
21cm diameter



£300-500

458. A black septarian geode egg shaped

Madagascar
23cm high



£400-600

459. A quartz prism

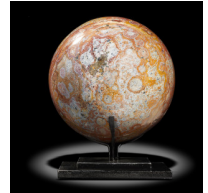
Madagascar
22cm high



£150-250

460. A jasper sphere on metal stand

Madagascar
17cm diameter



£200-300

461. A quartz clear freeform

Madagascar
14cm wide



£150-250

462. An agate freeform

Brazil
48cm high



£500-800

463. A large quartz geode in two pieces

Moroccan
59cm wide



£1200-1800

464. A calcite specimen with unusually large points

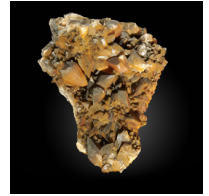
Moroccan
35cm



£600-800

465. An unusual calcite specimen

Moroccan
50cm



£600-1000

466. A pink quartz prism

Madagascar
43cm



£150-250

467. A crystalised septarian geode

Madagascar
13cm high



£80-120

468. Two unusual quartz "stalactite" groups

India
the largest 21cm high



£350-450

469. A moss agate freeform with quartz hollow

India
the specimen 35cm



£900-1200

470. A jasper freeform

Madagascar
42cm high



£600-1000

471. A colourful jasper freeform

Madagascar
32cm high



£600-800

472. A large jasper freeform

Madagascar
44cm high



£1200-1800

473. An amethyst specimen

Brazil
41cm wide



£600-800

474. An amethyst geode

Brazil
38cm high



£600-800

475. An amethyst geode

Brazil
44cm high



£600-800

476. A jasper sphere

Madagascar
on wooden stand
21cm diameter



£400-600

477. A ruby in fuchsite and kyanite sphere

India
20cm diameter



£1200-1800

478. A quartz sphere

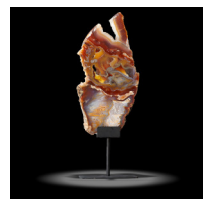
Madagascar
on wooden stand
21cm diameter



£400-600

479. An unusual chalcedony and agate slice

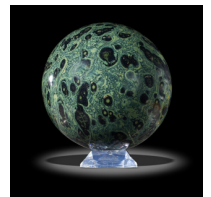
Brazil
on metal stand
overall 60cm high



£400-600

480. A Kambaba jasper sphere

Madagascar
16cm diameter



£500-800

481. A serpentine sphere

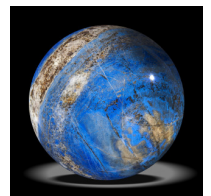
Himalayas
on marble stand
18cm diameter, 10kg



£500-700

482. A lapis lazuli sphere

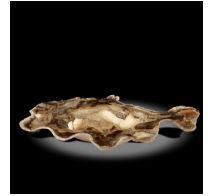
9kg, 17cm diameter



£1800-2200

483. A large and unusual polished onyx bowl

Mexico
85cm by 53cm



£2500-4000

484. A banded onyx bowl

Mexico
58cm by 52cm



£1500-2500

485. A cobra jasper bowl

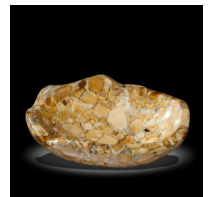
India
34cm wide



£400-600

486. A cobra jasper bowl

India
36cm



£900-1200

487. An agate bowl

Southern Brazil
36cm



£950-1200

488. A large polished onyx bowl

Mexico
68cm by 52cm



£3000-4000

489. A quartz bowl

30cm wide



£300-500

490. A pair of polished cylindrical onyx lampsMexico
30cm high

£400-600

491. A pair of amethyst lamps

30cm high



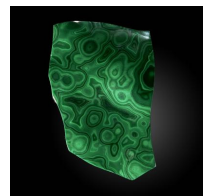
£800-1200

492. A pair of polished cylindrical onyx lampsMexico
48cm high

£500-800

493. An iron pyrite groupPeru
30cm

£750-1100

494. A polished malachiteZaire
26cm

£300-500

495. An iron pyrite egg

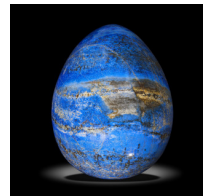
Peru
12cm



£300-500

496. A lapis lazuli egg

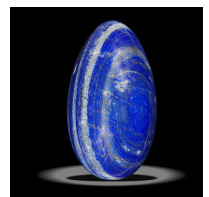
16cm high



£1000-1500

497. A large lapis lazuli egg

28cm high, 13.8kg



£2800-3200

498. A pair of massive lapis lazuli veneered obelisks

Afghanistan
131cm high



£1500-2500

499. A pair of white and black marble obelisks on pedestals

modern
set with specimen marbles
190cm high



£2000-3000

500. A pair of black marble and malachite veneered obelisks

modern
77cm high



£600-1000

501. A pair of multi coloured veneered black marble obelisks

modern
77cm high



£350-500

502. A pair of amethyst veneered white marble obelisks

modern
77cm high



£350-500

503. A pair of malachite obelisks

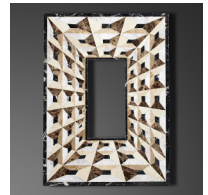
29.5cm high



£500-800

504. A multi marble veneered mirror/picture frame in geometric patterns

modern
102cm high by 74cm wide



£400-600

505. An amethyst veneered carved white marble tazza

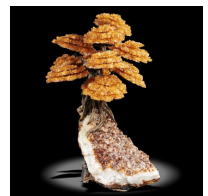
modern
25cm high by 46cm diameter



£200-400

506. A large quartz and resin tree

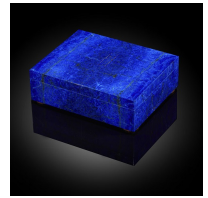
60cm high



£3000-4000

507. An impressive lapis lazuli veneered box

14cm by 11cm, in wooden display box



£2000-3000

508. A charoite veneered marble box

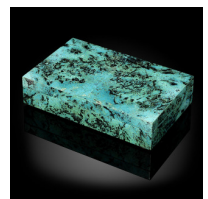
14.5cm square



£3000-5000

509. A shattuckite veneered marble box

19cm by 12cm



£2000-3000

510. A nephrite freeform

68cm high

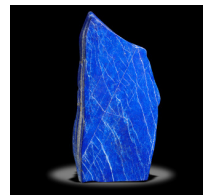
47.5kg



£2500-4000

511. A lapis lazuli freeform

47cm high, 16.1kg



£2000-2500

512. A lapis lazuli freeform

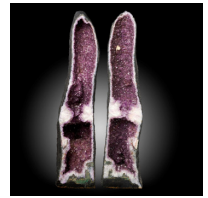
44cm high, 11kg



£1400-1600

513. A large pair of amethyst chimneys

Brazil
141cm high



£3000-5000

514. A large stalactite on stand

overall 156cm high

Provenance: From the collection of Dame Elizabeth Frink by descent to the present owner



£1200-1800

515. A quartz point

Brazil
42cm high



£500-800

516. An unusual mookite specimen

Western Australia
73cm



£200-300

517. A graphic feldspar freeform

Madagascar
38cm high



£400-600

518. A pair of marble inlaid jars

45cm high



£120-180

519. A lapis lazuli freeform

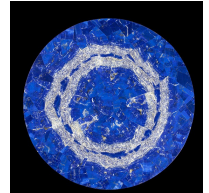
24cm high, 5.2kg



£700-900

520. A Madani quality lapis lazuli veneered tabletop

82cm diameter



£4000-5000

521. A set of three lapis lazuli spheres

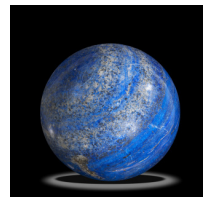
the largest 8.5cm diameter



£400-600

522. A Madani quality lapis lazuli sphere

15cm diameter, 5.5kg



£1200-1800

523. Two lapis lazuli cubes

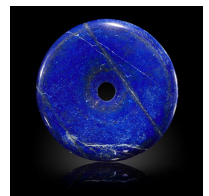
the larger 5.5cm buy 5.5cm by 5.5cm









£250-350

524. An unusual lapis lazuli disc

15cm diameter

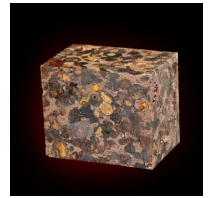


£1000-1500

525. **A gogotte**
Fontainebleu Forest, France
on metal stand
12cm high
- 
- £60-100
526. **A gogotte**
Fontainebleu Forest, France
on metal stand
14cm high
- 
- £60-100
527. **A gogotte**
Fontainebleu Forest, France
on metal stand
14cm high
- 
- £60-100
528. **A gogotte**
Fontainebleu Forest, France
on metal stand
12.5cm high
- 
- £60-100
529. **A gogotte**
Fontainebleu Forest, France
on metal stand
18cm high
- 
- £60-100
530. **A Pallasite meteorite end slice**
Sericho Fall
8.5cm, 187g
- 
- £200-300

531. A Pallasite meteorite cuboid

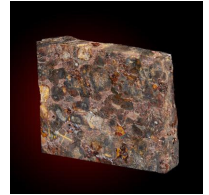
Sericho Fall
6cm by 4cm by 5cm, 539g



£600-1000

532. A Pallasite meteorite end slice

Sericho Fall
6cm by 5cm by 5cm, 137g



£150-250

533. A Pallasite meteorite end slice

Sericho Fall
8cm by 5cm, 205g



£200-300

534. A trilobite plaque

Cambrian, Moroccan
90cm by 47cm



£3000-5000

535. A brittle star and crinoid plaque

Moroccan, Ordovician
106cm by 70cm



£2500-4000

536. An ammonite group

Promicoceras Martonense, Marston Magna, Somerset
20cm high

The holy grail of English ammonite collectors, some pieces were used during Victorian times as decorative marble, but the site was lost until collectors found a small deposit six years ago. It is unlikely that another deposit will be found. Many hours were spent to expose these ammonites. The rear side of this piece shows the same ammonites polished flat.



£1100-1500

537. A block of various ammonites

Majunga, Madagascar, Albian, early Cretaceous
23cm high



£200-300

538. A large ammonite

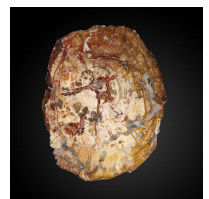
Madagascar
57cm high



£1200-1800

539. A fossil wood slice

Triassic period, Madagascar
53cm by 40cm



£600-1000

540. A crinoid plaque

Upper Silurian, Moroccan
79cm high



£600-800

541. An asaphus trilobite plate on metal easel stand

Ordovician period, Atlas mountains, Morocco
overall 56cm high



£1000-1500

542. A Crinoid (Sea Lily) plaque

Holzmaden, Germany, Jurassic
46cm high by 35cm wide

The fossil locality at Holzmaden in Germany is celebrated for specimens that show beautiful preservation. The rocks they come from are lower Jurassic in age (approximately 180 million years old). Fossils of many kinds of creatures are found at Holzmaden but Crinoids (sea lilies) and ichthyosaurs are among the most sought-after and are perhaps the most desired by collectors.



£200-400

543. A Crinoid (Sea Lily) plaque

Holzmaden, Germany, Jurassic
60cm high by 40cm wide



£400-600

544. A Saurian group plaque

Santana Formation, Cearra, Brazil, Lower Cretaceous
40cm high by 51cm wide



£100-200

545. A crayfish sp. plaque

Solnhofen, Germany, Jurassic
34cm high by 54cm wide



Solnhofen in Germany is one of the most famous and important fossil localities in the world, and it is from here that the celebrated Archaeopteryx (the first known bird) was found. The quarries around Solnhofen were originally mined for the beautiful lithographic slate they contained, and the process of lithography was invented using this stone. While digging, the quarrymen often came across the remains of a variety of different creatures perfectly preserved in the rock. Small dinosaurs, crocodiles, pterosaurs, plants, sea urchins, fish and sometimes - although very rarely - even insects.

£100-200

546. A polished fossil nautilus on base

Madagascar
20cm high



£200-300

547. A large polished ammonite

Madagascar
57cm wide



£2000-3000

548. A pair of framed shark tooth collages

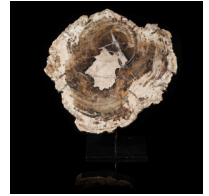
from 55m.y.o. fossil shark teeth from phosphate deposits of Khouriba, Morocco
each 49cm by 59cm



£600-1000

549. A pair of fossil wood sections on wooden stands

Madagascar, Triassic
on metal stand
31cm high by 33cm wide and 30.5cm high by 33cm wide



£300-500

550. An ammonite block

Escragnolles, France, Albian stage, Cretaceous
Species: Oxytropidoceras acutocarinatum, Hoplites dentatus, Hoplites benetiatus, Hoplites rudis, Beudanticeras beudanti, Phylloceras, Brachiopodes, assorted gastropods, lamellibranchia, belemnites, corals
on metal stand
36cm high by 29cm wide



£800-1200

551. A Chrysanthemum stone freeform on stand

Hunan Province, China
52cm high

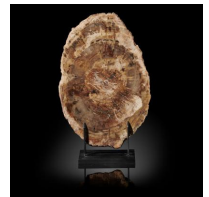
This is only known from one location and has been used as decoration and the subject of myths for over two thousand years.



£1400-2000

552. A fossil wood section

Madagascar, Triassic
on metal stand
28.5cm high by 19cm wide



£150-250

553. An impressive 12 point Wapiti trophy on shield

dated *October 1930*
width of antlers 102cm



£200-300

554. A black bear skull

Canada, from native tribes
on metal stand
31cm high by 18cm wide



Import permit FR1104500346-1

£250-400

555. A zebra skull

recent
54cm



£200-300

556. A greater Kudu head on wooden shield with data

1998
155cm high by 83cm deep



£500-800

557. A wildebeest head mount

recent
66cm deep



£400-600

558. A full mount Nile crocodile

Madagascar, modern
on metal stand
107cm long



Import permit: IT/IM/2016/MCE/03579

£500-800

559. A dome of Indian birds

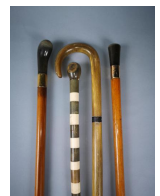
mid 19th century
including a Roller emerald starling etc
56cm high



£300-500

560. A rhinoceros horn walking stick

late 19th century
84cm long



£800-1200

561. A bone and horn cane

late 19th century
with two horn topped canes

£400-600

562. A framed lyre bird tail

modern
83cm high by 76cm wide



£400-600

563. A large dome of Morpho butterflies

35cm high



£500-800

564. A large red bamboo coral specimen (sp *Tubipora musica*)

Solomon Islands
with import certificate
47cm wide



£500-800

565. A display of colourful butterflies under glass dome

modern
38cm high



£400-600

566. Two shield mounted Red deer trophies

recent
the larger 117cm by 78cm



£150-250

567. Two Soemmerring's gazelle heads

recent
the larger 70cm high by 43cm wide



£400-600

568. A rams skull with horn

on modern metal base
69cm high

From a very rare, almost disappeared Sicilian breed of goats, named "Capra Girgentana".
An old ram with unusual large horns. From an Italian collection.



£300-500

569. A set of four framed insects

modern
25cm square



£200-300

570. A display of tropical crabs

modern
50cm high by 39cm wide



£500-800

571. A sea urchin and mushroom composition within glass dome

55cm high



£200-400

572. Two butterfly domes

modern
37cm high



£600-1000

573. A set of five framed insects and reptiles

modern
25cm by 25cm square



£200-300

574. A massive 13 point wapiti trophy

2nd half 20th century
126cm deep



£800-1200

575. A polar bear skin rug

1920's
224cm by 203cm



£800-1200

576. A large dome of pale tropical butterflies

40cm diameter



£500-600

577. A Victorian Hornbill *sp?* head in case

29cm high by 46cm wide



£400-600

578. A Cape buffalo trophy on wooden shield

dated in pencil 2/42/18
89cm wide



£200-300

579. Two display cases of Argonaut shells and fish

both 40cm by 50cm



£400-600

580. **A Victorian desk set made from all three native British deer species**



£80-120

581. **An elephant foot tantalus**

circa 1910
37cm



£100-200

582. **A framed display of scallop shells**

modern
73cm high by 52cm wide



£250-350

583. **A small dome of mixed colourful tropical butterflies**

26cm high



£300-400

584. **An antique shell collection**

mounted as a wall display
50cm high by 39cm wide



£500-800

585. **A dome of tropical butterflies**

37cm high



£200-300