

# Summers Place Auctions Ltd



Garden & Natural History  
18th & 19th May 2021



## **SUMMERS PLACE AUCTIONS**

### **Live Auction (Lots 1-224)**

Tuesday 18th May, 2021

at 1pm

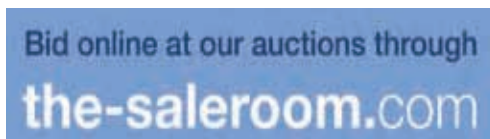
### **Sealed Bid Auction (Lots 400-836)**

Sealed bids must be with us by 4pm,  
Wednesday 19th May

**Please visit our website for additional  
images and videos of many of the Lots**

### **Viewing**

By appointment only



Please note there is a 5% surcharge  
for using this facility

## **SPECIALISTS AND AUCTION ENQUIRIES**

### **James Rylands**

Garden Statuary Specialist

+44(0)1403 331 334

james.rylands@summersplaceauctions.com

### **Rupert van der Werff**

Natural History Specialist

+44(0)1403 331 333

rupert.werff@summersplaceauctions.com

### **Errol Fuller**

Curator for Natural History

errol.fuller@summersplaceauctions.com

Administrators/Accounts/  
Shipping

### **Kate Diment**

+44(0)1403 331 335

kate.diment@summersplaceauctions.com

### **Lindsay Hoadley**

+44(0)1403 331 337

lindsay.hoadley@summersplaceauctions.com

**www.summersplaceauctions.com**

### Sealed Bid Auction Lots 400-836

All sealed bids must be with us, at the latest by 4pm BST on the 19th May since the bids will be opened on the 20th May. The winning bid will be the highest left on each lot above the reserve. Bids are non sequential and the highest bid left is the price at which the lot is sold plus buyers premium and any VAT liable. In the event of two identical winning bids being left on the same lot, the earliest received bid shall take precedence. Summers Place Auctions decision on which is the winning bid shall be final. Winning bidders will be invoiced after the bids are opened. For further information on sealed bids and how they work see our conditions of business.

The following 72 lots are from the personal collection of Tim Wonnacott and until recently were set out in the grounds of his country house, Whitefoots, near Ashington, West Sussex which has now been sold.

Tim is a well-known TV presenter and auctioneer and for many years was a colleague of ours at Sotheby's. His diverse media career has included appearing on and presenting well known programmes such as Bargain Hunt and Antiques Road Trip, but he also enthralled the nation a few years ago with his appearance on Strictly Come Dancing.

As a charity auctioneer, he has raised a lot of money for various good causes over the years and this sale includes a painted resin cow (lot 463) presented to him by Esther Rantzen, after he raised over £600,000 selling sixty decorated cows in the first Cow Parade auction in London when he was Chairman of Sotheby's Olympia 2002. Tim has kindly agreed to donate the proceeds of this lot to Childline, and Summer's Place Auctions will not be charging Buyer's Premium on this lot.



400

**A carved stone trough**

28cm high by 79cm wide  
by 53cm deep

*(plants not included)*

£150-250

401

**A pair of Victorian  
carved sandstone  
hexagonal obelisks**

circa 1860

200cm high

£800-1200

For details of our buyers premium which is added onto the hammer price together with any other applicable charges please refer to our guide for prospective buyers



402



405



403



404

402

**A collection of glazed earthenware planters and flower pots together with two Greek-style amphorae**

and three stands

the largest 60cm high

£200-400

403

**Approximately 100 terracotta flower pots**

late 19th century onwards

including some hand-thrown examples and some with maker's stamp

the largest 16cm high

£60-100

404

**A large collection of terracotta flower pots, jardineres and trays**

19th century and later

the largest 50cm high, together with three terracotta wall hung pouches

£200-400

405

**Approximately 100 terracotta flower pots**

late 19th century onwards

including some hand-thrown examples and some with maker's stamps, together with approximately 40 terracotta seedling pots

the largest 16cm

£80-120





406

**A carved stone finial**

17th/18th century

supported on a millstone  
and column base

142cm high

£250-400

407

**A wrought iron three-tier  
plant stand with hinged  
back**

French, late 19th/early  
20th century

160cm wide

£300-500



408

**A run of approximately  
15 feet of late Victorian  
slatted white painted  
greenhouse decking with  
tin gravel trays**

£150-250

409

**A collection of four  
galvanised metal  
rectangular planters**

modern

124cm wide and a similar  
**smaller planter**, 63cm  
wide

£200-400



For details of our buyers premium which is added onto the hammer price together with any other applicable charges please refer to our guide for prospective buyers



410

**A carved stone trough**

32cm high by 59cm wide  
by 36cm deep

*(plants not included)*

£100-200

413

**A stone bow front trough**

27cm high by 56cm wide  
by 58cm deep

*(plants not included)*

£150-250

411

**A carved stone trough**

24cm high by 70cm wide  
by 41cm deep

*(plants not included)*

£120-180

412

**A rectangular carved  
stone trough**

9cm high by 130cm  
wide by 38cm deep, and  
**another carved stone  
trough**, 23cm high by  
73cm wide by 34cm deep

£220-400





414

**A carved stone trough**

27cm high by 53cm wide  
by 61cm deep

*(plants not included)*

£150-250

415

**A D-shaped carved stone trough**

28cm high by 67cm wide  
by 52cm deep, together  
with a **similar smaller**  
**trough**, 20cm high by  
60cm wide by 46cm deep

£250-400

416

**A roughly hewn rectangular stone trough**

29cm high by 55cm wide  
by 50cm deep, together  
with **another rounded**  
**rectangular carved stone**  
**trough**, 22cm high by  
62cm wide by 43cm deep

£200-400

417

**A carved stone trough**

20cm high by 112cm wide  
by 38cm deep

*(plants not included)*

£120-180

418

**A carved stone trough**

19cm high by 91cm wide  
by 41cm deep

*(plants not included)*

£120-180



416



417



418

For details of our buyers premium which is added onto the hammer price together with any other applicable charges please refer to our guide for prospective buyers



419

**A Victorian slate water butt**  
late 19th century

64cm high by 135cm wide by  
51cm deep

*(plants not included)*

£300-500

422

**A rounded rectangular  
copper vat**

19th century

with tap hole

60cm high by 113cm wide

£500-800

420

**A carved rectangular trough**

20cm high by 56cm wide by  
40cm deep, and **another carved  
stone trough**, 20cm high by  
65cm wide by 39cm deep

£100-200

421

**A collection of five composition  
stone planters**

2nd half 20th century

the largest 66cm wide

£200-300





423

**A copper bath**

French, mid 19th century  
incorporating tap at one end  
and later castor

57cm high by 143cm wide

*(plants not included)*

£600-800

424

**A pair of glazed earthenware troughs**

with maker's stamp

25cm high by 72cm wide by  
46cm deep, together with a  
**smaller stone trough**

23cm high by 40cm wide by  
26cm deep

£100-200

425

**A set of four composition stone tazza urns**

2nd half 20th century

50cm diameter

£200-400

426

**A carved Cotswold stone staddlestone**

67cm high, together with a  
carved sandstone mushroom  
group and a carved  
limestone relief carving of a  
stylised heart, 49cm high

£300-500

427

**A Georgian carved stone tablet**

early 19th century

inscribed *CSRB*

36cm high by 38cm wide,  
together with a millstone,  
40cm diameter

£100-200



For details of our buyers premium which is added onto the hammer price together with any other applicable charges please refer to our guide for prospective buyers



428

**A stainless steel table  
modern**

with rectangular pink  
Balmoral granite top

137cm long by 58cm wide

£400-600

429

**A teak garden suite of  
furniture comprising  
oval table**

203cm long by 148cm  
wide, together with **nine  
teak armchairs, green  
umbrella and marble  
lazy susan**

£600-1000

430

**A Victorian cast iron  
rustic seat**

late 19th century

with wooden slats,  
together with a similar  
**smaller later chair**

the seat 120cm wide

£250-400



431

**A long Lister teak  
hardwood seat**

2nd half 20th century

stamped *Lister*

244cm wide

£250-400



432

**A pair of Coalbrookdale  
style Fern and Blackberry  
pattern cast iron garden  
seats**

20th century

110cm wide

£600-800



433

**A near pair of Anglo-  
Indian teak Hepplewhite  
style armchairs**

2nd half 20th century

£150-250



434

**A set of four Anglo-  
Indian hardwood chairs**

2nd half 20th century

original caning now  
replaced with hardwood  
slats

£250-400



For details of our buyers premium which is added onto the hammer price together with any other applicable charges please refer to our guide for prospective buyers





435  
A collection of vintage garden tools including mattock, hayfork, wheeled edging shears, hoes, edging spades, slashers, billhooks, axe handle, sledge hammers, and other tools together with three galvanised watering cans  
£50-80



436  
A collection of vintage garden tools including three brass rose sprays, shears, axes, hand drill, Hawes brass watering can, sieve, two baskets and a Sussex trug  
£40-60



437  
A Victorian cast iron roller  
late 19th century  
stamped *J Hooley, Macclesfield*  
50cm wide  
£80-120



439  
A set of six wrought iron conical treillage frames  
modern  
206cm high  
£150-250



438  
A group of nine Victorian cast iron sections of underfloor radiator pipe covers  
18cm by 31cm wide and two 46cm wide, two pierced brass radiator grilles, six Georgian wrought iron veranda spandrel brackets, eight wrought iron brackets, 20th century, and a graduated set of three wrought iron plant pot holders, 41cm diameter, the tallest 92cm  
£200-400



440

**A set of three carved stone finial tops**

17th/18th century

76cm high

*Only one showing in photograph*

£400-600



441

**A pair of hardwood columns**

Indian, 19th century

220cm high

£300-500



442

**A Barbara Hepworth style stone sculpture**

made-up

comprising two early sandstone column sections, possibly 12th century, surmounted by a millstone

240cm high

£500-800

For details of our buyers premium which is added onto the hammer price together with any other applicable charges please refer to our guide for prospective buyers





443  
**A collection of seven rectangular carved sandstone panels**  
 late 17th/early 18th century  
 carved in relief with foliage  
 the majority 37cm high by 58cm long  
 £800-1200



444  
**A collection of carved sandstone Victorian Gothic architectural fittings**  
 2nd half 19th century  
 £200-400



446  
**The components of a foliate and acanthus carved architectural arch**  
 2nd half 17th century  
 together with a **quantity of Victorian lead down pipe fittings**  
 £300-500



445  
**A pair of circular wirework three tier planters**  
 early 20th century  
 115cm high  
*(plants not included)*  
 £400-600





447  
**A harlequin set of four carved stone staddlestones**  
 the tallest 96cm high  
 £800-1200



448  
**A harlequin set of three sandstone staddlestones**  
 the tallest 85cm  
 £500-800

449  
**English School, 1st half 20th century**  
 A painted wooden mural of wood cutters  
 Oil on canvas laid on board  
 184cm high by 244cm wide  
 £300-500



For details of our buyers premium which is added onto the hammer price together with any other applicable charges please refer to our guide for prospective buyers



450

**Approximately 6 metres of wrought iron estate fencing**

19th century

comprising two panels 140cm high by 230cm wide and one panel 140cm high by 140cm wide

£200-300

451

**A pair of wrought iron gates**

late 19th century

120cm high by 280cm wide, together with a **pair of wrought iron panels with similar hooped tops**, each 130cm high by 122cm wide and **another pair of rectangular wrought iron panels with scrollwork decoration**, early 20th century, 127cm by 84cm

£400-600

452

**A wrought iron estate pedestrian gate**

19th century

152cm high by 120cm wide

£150-250

453

**A run of 7.3 metres of wrought iron estate railing**

19th century

comprising four panels including two on castors and two on bracket bases

118cm high

£300-500





454

**A pair of Doulton style  
painted lead pelicans**  
2nd half 20th century  
together with **two similar  
painted lead pelicans**  
37cm high

These pelicans are based  
on a model by Mark Villars  
Marshall for Doulton  
produced originally in  
terracotta and is illustrated  
in the *Early 20th century  
Doulton catalogue page 5,  
figure 733.*  
£600-800



455

**A set of four large  
Victorian carved  
limestone volute corbels**  
19th century  
71cm high by 51cm wide  
by 84cm deep  
£1200-1800

456

**A washing copper**  
19th century  
with iron handles  
70cm diameter  
£100-200



For details of our buyers premium which is added onto the hammer price together with any other applicable charges please refer to our guide for prospective buyers





457  
**A carved marble pedestal**  
 2nd half 20th century  
 94cm high  
 £80-120



458  
**A carved sandstone niche**  
 Rajasthani, 19th century  
 38cm high  
 £100-200



461  
**A cast iron urn**  
 20th century  
 66cm high, a similar  
**smaller urn**, 32cm high  
 and a **wrought iron**  
**basket**  
 £200-400



462  
**A wrought iron boot**  
**scraper on sandstone**  
**base**  
 mid 19th century  
 44cm wide  
 £100-200



459  
**A collection of twelve Arts**  
**and Crafts terracotta wall**  
**plaques**  
 mid 19th century  
 together with stainless steel  
 wall fittings  
 the rectangular ones 20cm  
 high by 28cm wide  
 £400-600

460  
**A Victorian cast iron table**  
 52cm diameter, together  
 with **four Victorian style**  
**painted aluminium chairs**  
 £200-400





463

**A resin 'Cow Parade' Friesian cow**

circa 2000

145cm high by 235cm long

Presented by Ester Rantzen on behalf of Childline to Tim Wonnacott Chairman of Sotheby's, Olympia saleroom following the successful first auction of Cow Parade items in October 2002 when a herd of sixty decorated cows realised in excess of £600,000 the highest charity auction total recorded at that time with an average price sold per cow of £10,000.

Tim Wonnacott has kindly agreed to donate all of the proceeds to Childline and **Summers Place Auctions will not be charging any buyer's premium on this lot.**

£1000-1500



464

**A composition stone triangular fountain base**

2nd half 20th century

128cm high

£200-400



For details of our buyers premium which is added onto the hammer price together with any other applicable charges please refer to our guide for prospective buyers





465

**A stone cheese weight with iron hook**

**another cheese weight 38cm high, and two curling stones**

the cheese weight 28cm wide

£100-200

466

**Three river washed stone boulders**

each approximately 60cm by 46cm, together with a quantity of rockery pebbles and tufa rocks

£100-200

467

**A carved stone tribal style mask corbel**

late 19th/early 20th century

43cm high, together with **another tribal style carved stone figure** 40cm high, and a **composition stone poodle**, 45cm high

£200-300

468

**An Edwardian wirework plant stand**

early 20th century

112cm wide

£250-400





469  
A lead figure of Pan  
circa 1920  
60cm high  
£200-400



470  
A pair of Sankey and Sons  
terracotta rhubarb forcers  
early 20th century  
with maker's stamp  
60cm high  
£200-400



472  
A Handyside  
Foundry cast iron  
Borghese urn on  
pedestal  
150cm high overall  
This urn, appears  
in the mid 19th  
century catalogue of  
Andrew Handyside  
and Co., plate 64. (See  
engraving)  
£600-1000

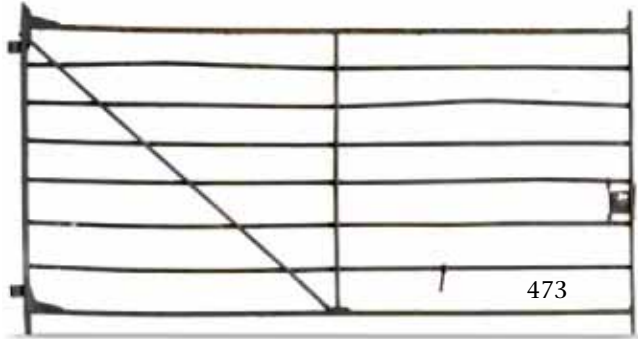


471  
A Manifattura di Signa  
terracotta pedestal  
early 20th century  
36cm high, together with  
a small marble urn, 30cm  
high and a marble mortar,  
30cm diameter  
£120-180



For details of our buyers premium which is added onto the hammer price together with any other applicable charges please refer to our guide for prospective buyers

# Other properties



473

**A wrought iron estate gate**

19th century

146cm high by 270cm long

£200-400

474

**A substantial wrought iron gate**

early 20th century, with side panel and upright

the gate 150cm high by 140cm wide, the panel 124cm wide

£400-600

475

**A similar substantial wrought iron gate**

with side panel and upright

measurements same as lot 474

£400-600

476

**A wrought iron fence panel**

early 20th century

130cm high

£250-400





477

**A Victorian cast iron boot scraper**

circa 1880

37cm wide

£150-250



480

**An unusual wrought iron boot scraper**

late 19th/early 20th century

124cm high

£300-500



479



480

478

**A Victorian brass doorstep in the form of a swan**

late 19th century

39cm, together with a cast iron boot scraper, 35cm high (*see website for additional image*)

£150-250

481

**A rare carved Portland stone Georgian armorial unicorn**

2nd half 18th century

76cm high

This would either have been an individual commission as one of a pair of gate pier armorial figures or could possibly have formed one part of a Royal Coat of arms with the flanking figure on the other side being a lion.

£800-1200



481

479

**An unusual blacksmith-made door knocker in the form of a mythological beast**

last quarter 20th century

the backplate 64cm high

£500-700

For details of our buyers premium which is added onto the hammer price together with any other applicable charges please refer to our guide for prospective buyers



482

**A near set of four carved stone Gothic finials**

2nd quarter 19th century

average height 100cm

The modelling of these finials would suggest that they come from the early manifestations of the Gothic style architecture in the second quarter of the 19th century.

*For clients wishing to purchase all fourteen finials, a single bid should be entered and if the bid exceeds the total of the highest bids entered for the four individual lots, then that will be the winning bid.*

£800-1200

483

**A similar set of four carved stone Gothic finials**

2nd quarter 19th century

average height 100cm

£800-1200

484

**A similar set of four carved stone Gothic finials**

2nd quarter 19th century

average height 100cm

£800-1200

485

**A similar smaller pair of carved stone Gothic finials**

2nd quarter 19th century

average height 85cm

£400-600



486

**A pair of zinc coated steel leaf balls**

modern

75cm high

£800-1200



487

**A pair of zinc coated steel artichokes on slate bases**

modern

53cm high

£600-1000



488

**A similar pair of zinc coated steel artichokes on slate bases**

modern

53cm high

£600-1000

489

**A stoneware corbel bracket**

circa 1870

stamped *George Skey, Tamworth*

53cm high by 30cm wide by 33cm deep

£200-400



490

**A 17th century carved stone gargoyle/ bust of a monkey**

31cm high by 40cm deep

£300-500



For details of our buyers premium which is added onto the hammer price together with any other applicable charges please refer to our guide for prospective buyers



491

**An impressive bronze mask  
of Hermes**

late 20th century

100cm high by 104cm wide

£8000-12,000



492

**A pair of painted wrought iron Gothic wall scones**

French, circa 1860

with hinged wall bracket

130cm high by 50cm deep

£400-600



493

**A carved oak bed tester**

17th century

with carved later giltwood bosses

145cm by 224cm

*Provenance:* Angus McBean, Flemings Hall, Suffolk

Angus McBean began his career in the theatre as mask-maker and scenery designer before turning to full-time theatre photography. McBean is renowned for his theatrical and inventive photography of the 1930s and 1940s. Imitated throughout his career, his influence especially in advertising is still prominent today. In 1935 he opened his own studio; and his prominent style was soon being published in glossy magazines. After the Second

World War he opened a larger studio in Covent Garden, and in the 1940s and 1950s was inundated with commissions from theatre companies. In the 1960s McBean photographed the *Beatles* for their first album as well as Audrey Hepburn, Vivien Leigh and Laurence Olivier.

In the 1960s, he bought a Tudor manor house, Flemings Hall in Bedingfield, Suffolk, and undertook a major restoration. He lived there until his death in 1990.

£800-1200



494

**A giltwood panel of a Buddha's head**

Siamese, 20th century

80cm high by 59cm wide

£200-300



For details of our buyers premium which is added onto the hammer price together with any other applicable charges please refer to our guide for prospective buyers



495  
**A pair of rare cast iron lamps**  
 mid 19th century  
 with later glass globes and on later carved limestone  
 bases  
 216cm high  
 £2000-3000



496  
**An unusual wooden dog kennel**  
 modern  
 raised on bronze feet  
 188cm high by 162cm long by 130cm wide  
 The inspiration for this dog kennel comes from the  
 Grade I listed kennel at Ightham Mote where it stands  
 in the courtyard. It was made in 1890 for Dido a St  
 Bernard. Apparently the dog was so large she was given  
 her food in a washing up bowl.  
 £1200-1800





497

**An impressive Russian  
style glass chandelier**

modern

142cm high by 99cm  
diameter

£20,000-30,000



For details of our buyers premium which is added onto the hammer price together with any other applicable charges please refer to our guide for prospective buyers



498  
**An unusual oak and horn stick stand**

Scottish, late 19th/early 20th century

190cm high

This unusual piece incorporating various ram horns and on the lower section the horns are drilled and would originally have held a chain to hold sticks in position.

£400-600



499

**A pair of carved hardwood West African tribal doors**

early 20th century

each 176cm by 80cm wide

£500-600

500

**A small iron framed greenhouse**

20th century

with twin doors opening to one side and shelves within, all on a zinc covered wooden base and casters

163cm high by 138cm wide by 71cm deep

£1000-2000



501

**Two substantial carved sandstone staddlestone bases**

85cm high

£80-120







502

**An iron framed small greenhouse**

20th century

with lifting roof sections to either end and access door to one side, all on a zinc covered wooden base, with casters

145cm high by 224cm long by 71cm deep

£1000-2000



503

504

503

**A copper watering can**

French, early 19th century

39cm high

£300-500



505

**An unusual pond yacht lugger**

late 19th century

on later wooden stand

194cm high by 168cm long

£400-600

506

**A painted composition stone bird cage**

French, mid 20th century

195cm high

£600-1000



504

**A copper watering can**

French, early 19th century

37cm high

£250-400

For details of our buyers premium which is added onto the hammer price together with any other applicable charges please refer to our guide for prospective buyers



507

### **Chinese Room Divider**

Wood

Unique

180cm high by 192cm  
wide by 56cm deep

£1000-2000

509

### **A large scale model of the tug boat 'St Budoc'**

well detailed and fitted  
with an electric motor  
(untested)

60cm high by 155cm wide  
by 34cm deep

£600-800



508

### **A Nautilus light**

A unique fibreglass,  
glass and coconut wood  
segment composition  
nautilus sculpture, for use  
as a centrepiece lighting,  
*(light fitting and wiring not  
included)*

40cm high by 55cm wide

£500-1500





510

**A rare aluminium ski gondola**

1950s

163cm high by 136cm long by 106cm wide

This aluminium ski gondola is one of the earlier examples, when skiing in Europe was still in its infancy. A similar one from the Stubnerkogelbahn resort in Austria can be seen in the Technisches Museum, Vienna.

£7000-10,000



For details of our buyers premium which is added onto the hammer price together with any other applicable charges please refer to our guide for prospective buyers





511

**A circular double sided bronze and cast iron fountain**

with bronze horses on either side

the columns flanking the pool still have the stickers put on by visitors to the Camden Lock Market

internal pool 245cm diameter; 510cm high by 350cm diameter

Please note that only half of this fountain is photographed. The reverse side of the fountain incorporates a bronze standing horse.

£12,000-18,000

512

**An impressive cast iron pavilion**

6 meters high by 330cm square

These pavilions were recently removed from the world-famous Camden Lock Market in London, which is situated by the Regent's Canal on a site formerly occupied by warehouses and other premises associated with the canal. Originally built as a horse hospital which served the horses pulling Pickford's distribution vans and barges along the canal, Camden Stables Market makes up the largest portion of the famous Camden Lock Market complex. Horses injured pulling barges along the canals would come here for treatment and rehabilitation. The Grade II listed stables now house over 450 shops and stalls selling a variety of items from the unique to the exotic.

Camden Lock market is now the fourth-most popular visitor attraction in London, attracting 28 million visitors annually.

These pavilions which feature the Camden Lock coat of arms were installed during the extensive renovations of the early 1990's.

*One of four available.*

£12,000-18,000

For details of our buyers premium which is added onto the hammer price together with any other applicable charges please refer to our guide for prospective buyers





513

**An important pair of wrought iron gates designed by Sir Edwin Lutyens and removed from The Deanery, Sonning**

overall height 234cm; overall width 229cm

opening height 223cm by 150cm wide

*To be sold as an in situ lot. Viewing by private appointment near High Wycombe, Bucks*

Sir Edwin Landseer Lutyens (29 March 1869 - 1 January 1944) is admired by many as one of Britain's greatest architects. He designed many English country houses, war memorials and public buildings – adapting to the requirements of his era, while keeping hold of a more traditional style.

Internationally, he is most famous for his role in designing and building New Delhi, which

later became the seat of the Government of India and where it is clear how Indian architecture inspired his designs.

A lot of his fame is down to the then new lifestyle magazine *Country Life*, created by Edward Hudson, as it featured many of his house designs. Hudson commissioned Lutyens for several projects including the magazine's headquarters on Tavistock Street and the refurbishment of Lindisfarne Castle. Most importantly he designed and built The Deanery in Sonning, Berkshire for Hudson between 1899 and 1901. Renowned garden designer Gertrude Jekyll designed the gardens and the house was essentially designed as a show home, which was featured in *Country Life* in 1921 and 1961.

During the 1980's the deanery was owned by Stanley Seeger who made various changes, including remodelling the entrance with gates big enough to drive a car through and replacing the wall. Seeger knew that the vendor was a big Lutyens admirer and so gifted the original Lutyens gates and wall components to him rather than possibly disposing of them forever. The current owner now hopes that they will find a new, suitable home, perhaps with someone who shares his admiration for the architect.

Lutyens was born in Kensington London, he was named after one of his painter father's friends Edwin Henry Landseer and was brought up in Surrey and later studied architecture at the South Kensington School of Art. He set up his own private practice shortly after finishing college in 1888 and during his first commission of a private house in Surrey he met the garden designer Gertrude Jekyll which later led to a professional partnership that would create the "Lutyens-Jekyll" garden



look of many country houses. This combination of formal and informal style is still defined as the “English garden”. His early work was mainly private houses in an Arts and Crafts style, but after 1900 his style became a more conventional Classicism. Knighted in 1918, he received the prestigious RIBA Royal Gold Medal 100 years ago in 1921, which firmly established him as one of the greatest architects.

£5000-8000

514

**The carved stone and brick components from a wall designed by Sir Edwin Lutyens and removed from the Deanery, Sonning**

comprising 12 limestone pier caps, 80 meters of limestone coping stones, and 1300 curved bricks forming a tracery pattern.

*To be sold as an in situ lot. Viewing by private appointment near High Wycombe, Bucks.*

£4000-6000



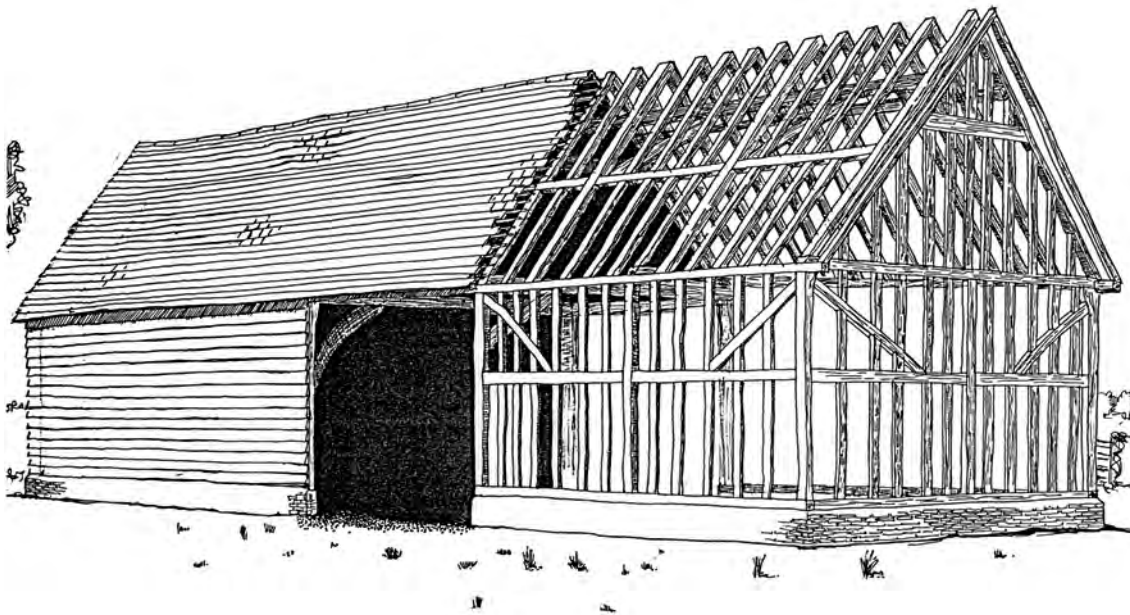
*Gertrude Jekyll in the garden at The Deanery, Sonning, next to the wall*



*The wall designed by Sir Edwin Lutyens for The Deanery, Sonning.*



For details of our buyers premium which is added onto the hammer price together with any other applicable charges please refer to our guide for prospective buyers



515

### St John's Barn

A historic oak barn frame

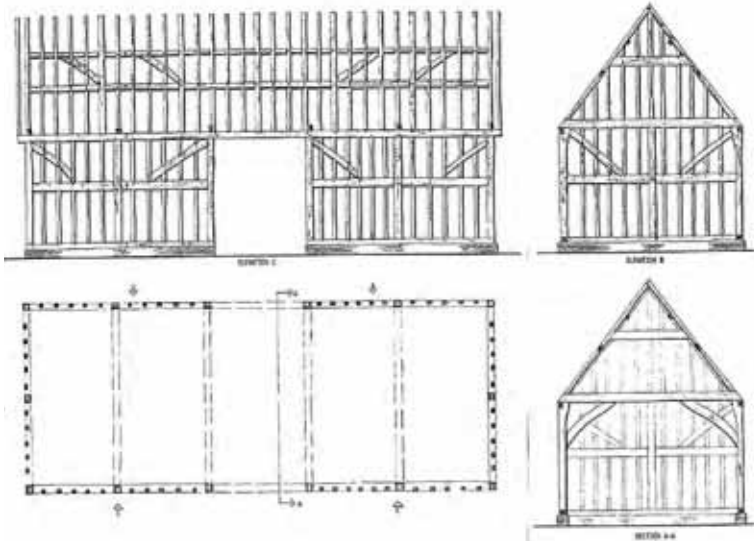
18th Century and earlier, comprising approximately 300 timbers with full plans for reassembly and quote for re-erection within the UK

15.6m long by 6.2m wide by 8m tall approximately

***This lot is being sold in situ and can be viewed by prior appointment in Suffolk.***

Please see our website for further information

£70,000-120,000







For details of our buyers premium which is added onto the hammer price together with any other applicable charges please refer to our guide for prospective buyers



516

† A large beaten copper  
pot with ring handles  
early 20th century  
66cm high by 87cm wide  
£900-1200

519

† A large beaten brass pot  
early 20th century  
45cm high by 96cm  
diameter  
£800-1200

517

A pair of Hode Pottery  
Greek Pithos style clay  
planters  
modern  
inscribed *Hode Pottery*  
57cm high  
£300-500

518

A pair of cast iron  
planters  
French, early 20th century  
50cm wide, together with  
a pair of small cast iron  
urns, 43cm wide  
£100-200





520  
**A terracotta storage jar**  
 Mediterranean, late 19th/  
 early 20th century  
 66cm high, together  
 with a **cast iron hopper**  
 reputedly from Petworth  
 House, 38cm (*hopper not  
 illustrated*)  
 £120-180



521  
**A terracotta storage jar**  
 early 20th century  
 possibly by Compton,  
 bearing two circular  
 makers marks  
 82cm high  
 Although this model  
 does not appear in the  
 Compton catalogue it is  
 similar in style to the Ali  
 Baba pot. The two circular  
 stamps could possibly be

a Compton mark which  
 was normally applied to  
 the pot and quite often  
 degrades over the years  
 leaving a circular stamp  
 with no discernible  
 markings on it.  
 £300-500

522  
**A pair of composition  
 stone urns on pedestals**  
 last quarter 20th century  
 157cm high  
 £1000-1500



523  
**† A pair of carved  
 sandstone lug pots**  
 modern  
 74cm high  
 £800-1200



For details of our buyers premium which is added onto the hammer price together with any other applicable charges please refer to our guide for prospective buyers



524  
† A shallow carved  
sandstone bowl  
modern  
63cm diameter  
£400-600

525  
† A pair of carved  
sandstone shallow bowls  
modern  
44cm diameter  
£500-800

526  
† A carved stone bowl on  
stand  
modern  
80cm high by 122cm wide  
£1200-1800

527  
A Victorian Gothic  
carved stone font  
the centre section  
initialled *HK* and dated  
*1849*  
103cm high  
£1000-1500





528

**A pair of faux rattan  
Dedon planters**

with yew topiary  
the planter 90cm high  
£200-400



529

**A set of four faux rattan  
Dedon planters**

with yew topiary  
the planter 90cm high  
£400-600

530

**A set of three zinc coated  
steel planters**

modern  
each with topiary yew  
the planter 90cm high  
£450-700



531

**A similar pair of zinc  
coated steel planters**

modern  
each with topiary yew  
the planter 90cm high  
£300-500



For details of our buyers premium which is added onto the hammer price together with any other applicable charges please refer to our guide for prospective buyers



532

**A pair of tapering square lead planters**

2nd half 20th century

60cm high by 56cm wide

£1000-1500



533

**A pair of cast iron urns**

48cm high

£300-500



534

**A pair of small cast iron campana urns**

20th century

50cm high

£150-250

HOPE'S LEADWORK FOR THE GARDEN



822  
36" wide, 9" high, 6" deep

535

**A pair of rare Hope lead rectangular planters**

American, early 20th century

24cm high by 94cm wide by 20cm deep

This model appears in the catalogue of Hope's Leadwork for the garden in May 1932. Hope were based in Jamestown New York with offices on Park Avenue and in Montreal and Toronto and specialised in a wide range of leadwork including cisterns, planters and lead sculpture for the garden.

£600-1000



535



536



536

**A similar pair of rare Hope lead rectangular planters**

£600-1000

537

**A composition stone urn on pedestal**

2nd half 20th century

128cm high

£100-200



537

538

**A large composition stone urn**

2nd half 20th century

82cm high

£300-500



538

For details of our buyers premium which is added onto the hammer price together with any other applicable charges please refer to our guide for prospective buyers





539

**A rare Blanchard's terracotta fountain**

circa 1870

68cm high

Although not stamped, a similar fountain is illustrated in the Blanchard catalogue (*see engraving*) and footnote to lot 13

£800-1200



540

**A Georgian lead pump head**

late 18th/early 19th century

with wooden back plate and iron handle

the pump head 88cm high

£200-400



541

**The components of a lead wall fountain**

early 20th century

comprising three dolphins supporting a shell together with two earlier lead hoppers

the shell 72cm wide

£250-400



542

**A rare Coalbrookdale cast iron fountain**

last quarter 19th century

100cm high

A similar single tier fountain is illustrated in the 1875 Coalbrookdale catalogue, Section III, no 32.

£500-800



543

**A pair of caved stone basins**

Indian, 2nd half 20th century

62cm high

£250-400



544

† **A bronze urli**

Indian, 20th century

78cm diameter

£1200-1800

For details of our buyers premium which is added onto the hammer price together with any other applicable charges please refer to our guide for prospective buyers





545

† **An exceptionally large lingam stone**

92cm high

Lingam stones are symbols of worship, based on the scriptures and cultural traditions among the Hindus, particularly of the Shaivaites and Smartha Brahmins. Stones are ancient and connote divinity and are of smooth cylindrical form. All of the Lingams occur naturally in the Narmada River and are finished off by hand to enhance their egg shape. Shiva means auspiciousness and linga means a sign or a symbol. Hence the Shiva Linga is regarded as a “symbol of the great God of the universe who is all-auspiciousness.”, Legends also say that for Lord Shiva, the Hindu God, the river is especially sacred on account of its origin, and it is often called Shankari i.e., daughter of Shankar (Lord Shiva). All the pebbles rolling on its bed are said to take the shape of his emblem with the saying, “Narmada Ke Kanker utte Sankar” (a popular saying in the Hindi belt of India), which means that ‘pebble stones of Narmada gets a personified form of Shiva’. These lingam shaped stones (cryptocrystalline quartz, called Banalinga also called (Banashivalingas) are much sought after for daily worship by the Hindus.

£3000-4000



546

† **A riveted wrought iron kadai**

Indian, 20th century  
on later wrought iron stand

130cm diameter

£800-1000



547

† **A riveted wrought iron kadai**

Indian, 20th century  
with a later tripod and  
with hanging skillet

110cm diameter

£400-600



548

† **A painted wood and wrought iron door**

Gujarate, India, early 20th century

203cm high by 118cm wide

£1000-1500

549

**A bronze figure of two warriors**

Siamese, late 19th/early 20th century

on later wooden base

55cm high

£200-300



For details of our buyers premium which is added onto the hammer price together with any other applicable charges please refer to our guide for prospective buyers



550  
**A David Harber smoked glass obelisk sundial**

modern

inscribed with a poem and on stainless steel base originally wired with a light together with steel gnomon with drop in plaques denoting Spring and Autumn equinox and Summer solstice  
210cm high

The length of the shadow cast by the obelisk at noon can be calculated



and shown with the stainless steel marker set in the ground.

£1500-2500

551

† **A substantial column pedestal**

modern

136cm high, diameter of top 62cm

£600-1000



552

**A wrought iron and zinc armillary on Louis XVth style composition stone base**

late 19th/early 20th century

160cm high

£1000-1500



553

**A carved Portland stone  
curved seat**

circa 1900

173cm wide

£2000-3000



554

**A carved white marble  
bench**

Italian, circa 1900

with later veined marble  
top

183cm long

£1000-1500



555

† **A carved sandstone  
bench or low table**

Indian, modern

57cm high by 137cm long

£800-1200



For details of our buyers premium which is added onto the hammer price together with any other applicable charges please refer to our guide for prospective buyers



558

† A carved sandstone  
table

modern

with black slate top

88cm high by 156cm long

£2000-3000



557

A carved hardwood seat

modern

184cm wide

£300-500



556

An aluminium parasol  
table

an aluminium urn,  
47cm high and a  
wooden seat, 110cm  
wide

£80-120





559

**Alardus van den Bosch  
for Fawley Court**

*"Wave"*

A marquetry and iron  
table, 2008

61cm diameter

£800-1200



560

**A pair of large hardwood  
chairs**

modern

120cm high

£800-1200



561

**A wrought iron circular  
tree seat in two halves**

early 20th century

130cm diameter

£300-500

For details of our buyers premium which is added onto the hammer price together with any other applicable charges please refer to our guide for prospective buyers





562

**A wrought iron tree seat**

2nd half 19th century

in two halves

170cm diameter

£2500-4000

563

**A wrought iron and mesh rocking chair**

modern

with wooden foot and arm rests

172cm long

£500-800



564

**A similar rocking chair**

£500-800

565

**A Regency style wrought iron bench**

made-up and incorporating some early elements

188cm long

£500-800



566

**A pair of Victorian cast iron tables possibly by Coalbrookdale**

2nd half 19th century

(lacking marble tops) but with two later iron mesh tops

69cm long

£300-500



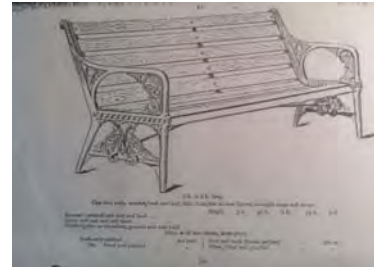
567

**A similar cast iron table**

£150-250

For details of our buyers premium which is added onto the hammer price together with any other applicable charges please refer to our guide for prospective buyers





568

**A Coalbrookdale Water Plant pattern cast iron seat designed by Christopher Dresser**

possible marks obscured by paint

190cm wide

This design by Christopher Dresser no. 206162 was registered and patented by the Coalbrookdale Foundry at the Public Records Office on 18th February 1867 and is seat no. 45 in their 1875 Castings Catalogue, section II page 251 (*see watercolour design*).

£600-1000

569

**A rare Victorian cast iron seat**

end support with patent and registration stamps

185cm long

£500-800





570

**A strapwork iron tree seat**

modern

182cm diameter

£1500-2500



571

**A cast iron circular table**

early 20th century

with later granite top

61cm diameter

£200-400

572

**A Victorian cast iron table**

late 19th century

with circular marble top

69cm diameter

£400-600



571



572

For details of our buyers premium which is added onto the hammer price together with any other applicable charges please refer to our guide for prospective buyers



573

**A suite of cast iron and wooden furniture by Benito**

modern

each piece stamped with maker's plaque

the table 79cm square

£800-1200



574

**A suite of Dedon Barcelona range furniture designed by Richard Frinier**

modern

comprising four faux rattan chairs and glass topped table

the table 100cm square

£600-1000





575

**An aluminium framed pilot's seat**

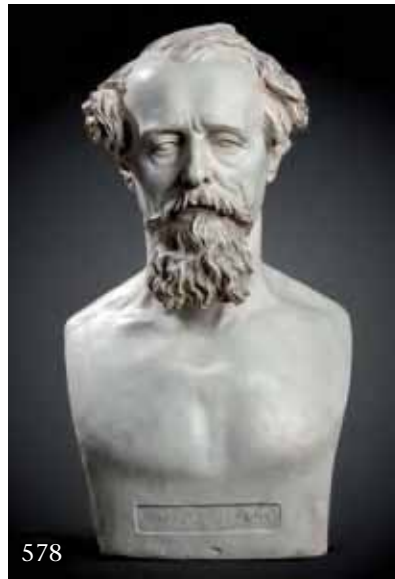
possibly from a 2nd World War bomber

With chrome fixtures and later button-back leather upholstery, the back with indistinct maker's stamp

*(photographs of this seat prior to restoration are available on request)*

£2500-4000

For details of our buyers premium which is added onto the hammer price together with any other applicable charges please refer to our guide for prospective buyers



576  
**After the Antique: A  
 plaster bust of Laocoon**  
 modern  
 80cm high  
 £300-500

578  
**A plaster bust of Charles  
 Dickens**  
 modern  
 66cm high  
 £200-400

577  
**After the Antique: A  
 white plaster bust of  
 Diana**  
 modern  
 74cm high  
 £250-400

579  
**After the Antique: A resin  
 bust of Venus**  
 modern  
 76cm high  
 £300-500





580

**A composition stone statue of Diana the Huntress**

2nd half 20th century

135cm high

£500-800

581

**A composition stone figure of Hebe**

2nd half 20th century

160cm high

£300-500

For details of our buyers premium which is added onto the hammer price together with any other applicable charges please refer to our guide for prospective buyers



582

**After Canova: A carved white marble group of the three Graces**

2nd half 20th century

192cm high

£7000-10,000





583  
A set of four carved  
limestone figures  
representing the Seasons  
2nd half 20th century  
on pedestals  
172cm high  
£3000-5000

584  
A composition stone  
group of mare and foal  
2nd half 20th century  
50cm high by 70cm long  
£500-800

585  
A simulated porphyry  
painted composition  
stone figure of Aurora  
modern  
175cm high  
£100-200





586

**A composition stone classical bust on pedestal**  
modern

136cm high, together with  
**a similar classical bust on pedestal**, modern 136cm high  
£150-250

587

**A set of four composition stone figures representing the Seasons**

late 20th century  
145cm high  
£2000-3000



588

**Two composition marble panthers**

2nd half 20th century  
87cm high

Possibly produced by  
Kenneth Lynch of Wilton  
Connecticut who sold a  
large range of composition  
stone, bronze and lead  
statuary through the  
last quarter of the 20th  
century.

£1200-1800



For details of our buyers premium which is added onto the hammer price together with any other applicable charges please refer to our guide for prospective buyers





589  
A patinated fibreglass  
term figure representing  
Autumn  
modern  
146cm high  
£250-400



590  
A pair of patinated  
fibreglass term figures  
representing Summer  
and Autumn  
modern  
145cm high  
£500-800



591  
A Durenne foundry cast  
iron torchere figure of an  
Egyptian boy  
the base stamped  
127cm high  
Antoine Durenne set up  
in 1847 at Sommervoire  
Haute-Marne. He held a  
number of official posts

most notably being on the  
installation committee for  
the Exposition Universelle  
in 1878. The Durenne  
foundry was incorporated  
into the Val d'Osne  
foundry in 1888.  
£1500-2500



592

**A composition stone urn on pedestal**

137cm high

2nd half of 20th century

**along with a composition stone figure of a girl**

140cm high together

*see website for further images*

£300-500



593

**After Jacquemart: A pair of composition stone dogs**

modern

80cm high

£500-800



594

**An unusual composition stone figure of a deer with bronze antlers**

2nd half 20th century

155cm high

£1200-1800



595

† **A near pair of sandstone mythological lions**

Indian, early 20th century

the larger 50cm high

£1000-1500

For details of our buyers premium which is added onto the hammer price together with any other applicable charges please refer to our guide for prospective buyers



596  
**After John Cheere: A pair of lead figures of shepherd and shepherdess**  
 2nd half 20th century  
 the shepherd 132cm high  
 £1500-2500



597  
**After Van Nost: A lead figure of a kneeling North American Indian**  
 modern  
*damages*  
 100cm high  
 The original model supporting a sundial plate was commissioned for Hampton Court in 1701.  
 £800-1200



598  
**A composition stone figure of Summer**  
 mid 20th century  
 151cm high  
 £300-500





599

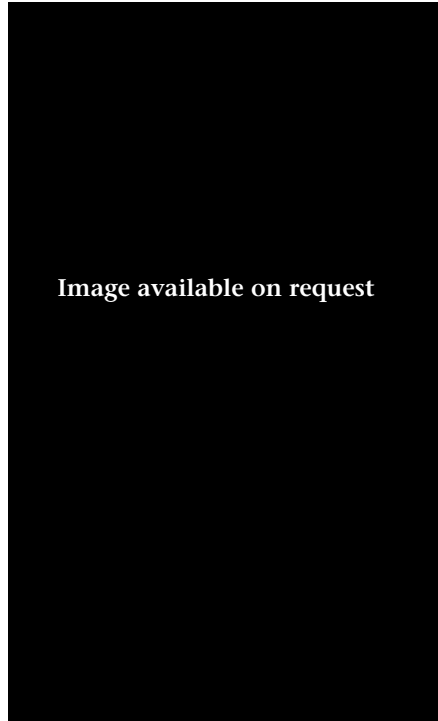
**A carved Portland stone female torso**

mid 20th century

105cm high

From the estate of the late Rita Smith. TV Comedy actress from the late 50's and 60's including starring alongside Shelia Hancock in The Rag Trade and later doyenne of Britannia Antiques who with her husband Ian traded very successfully for many years with the largest stock of 19th century Majolica in the UK.

£300-500



600

**William Crozier (1942)**

Debbie, 1979-1980

Bronze

Edition 1/9

Signed and dated

76cm by 74cm by 125cm

*Provenance:* Ex The Robert Scull Collection, New York

*Image available on request.  
Proof of age will be required.*

£200-400



601

**Ian Gregory**

Dog

Ceramic

Unique

81cm high by 39cm wide by 25cm deep

£1500-2500

For details of our buyers premium which is added onto the hammer price together with any other applicable charges please refer to our guide for prospective buyers



602

**Chang Feng**

Gallop

Bronze Sculpture

Signed

Edition 54 of 99

40cm high by 62cm wide  
by 17cm deep

£3000-5000

603

**Ann Vrielinck, born 1966**  
**Belgium**

Arrange

Bronze

69cm high by 220cm wide  
by 70cm deep

£4000-6000





604

▲ **Walenty Pytel**

Hawk Head

Steel

Signed

Unique

35cm high by 33cm wide by  
12cm deep

£1200-1800

605

**Guido Deleu**

The Visitor

Bronze

180cm high by 75cm wide by  
65cm deep

£12,000-16,000

This popular piece has been cast in  
a number of sizes of which this is  
one of the largest



For details of our buyers premium which is added onto the hammer price together with any other applicable charges please refer to our guide for prospective buyers





606  
**A bronze figure of a girl holding an apple**  
 3rd quarter 20th century  
 on stone pedestal  
 figure 133cm high, 179cm high overall  
 £2000-4000



607  
**A similar bronze figure of a naked girl**  
 3rd quarter 20th century  
 on stone pedestal  
 180cm high  
 £2000-4000



608  
**Jonathan Wylder**  
**Ballerina**  
 Bronze with marble base  
 60cm high by 45cm wide  
 by 30cm deep  
 £2500-3500



609

**Alex Davies, born 1970**

Kneeling Figure

Bronze

Signed and numbered 1  
from an edition of 9

50cm high by 25cm wide  
by 20cm deep

£3000-4000

610

**Jacques Vanroose**

Force

Bronze, edition of 100

106cm high by 40cm wide  
by 30cm deep

£2000-4000



For details of our buyers premium which is added onto the hammer price together with any other applicable charges please refer to our guide for prospective buyers



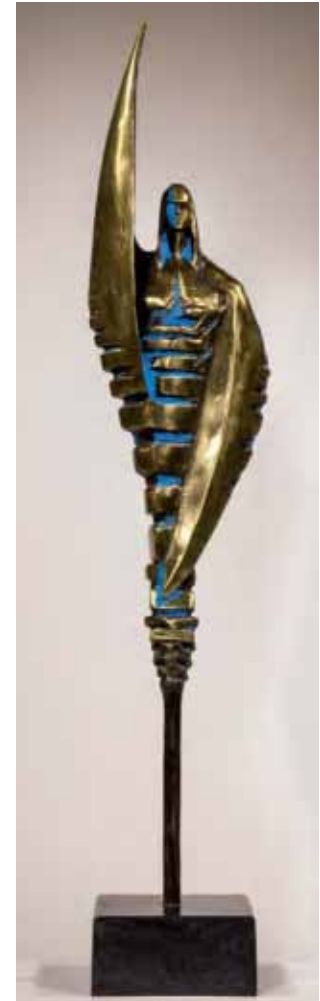
611  
**Amos Supini**  
 United Family  
 Springstone  
 Unique  
 156cm high by 35cm wide  
 by 25cm deep  
 £3000-4000



612  
**Puzzling**  
 Bronze  
 112cm high by 33cm wide  
 by 33cm deep  
 £800-1200



613  
**Munyaradzi Jeché**  
 My Imagination  
 Springstone  
 94cm high by 24cm wide  
 by 21cm deep  
 £1200-1800



614  
**Toma Nenov**  
 Angel  
 Bronze  
 Signed and numbered 1 of 3  
 102cm high by 24cm wide  
 by 18cm deep  
 £1500-2500





615

**Innocent Nyashenga**

Stronger Together

Springstone

Unique

43cm high by 37cm wide by  
30cm deep

£1500-2500



616

**Carol Peace**

Tall Lady

Bronze Resin

Signed 'Carol Peace 2001'

Edition 30 of 34

36cm high by 14cm wide by  
16cm deep

£200-400



617

**Victor Matafi**

Self-Introspect

Opal Stone

160cm high by 75cm wide by  
45cm deep

£5000-6000

For details of our buyers premium which is added onto the hammer price together with any other applicable charges please refer to our guide for prospective buyers



618

**A bronze rhinoceros**

modern

on marble base

38cm long

£300-500



619

**A little bronze elephant**

71cm high

£400-600



620

**B.C. Zheng**

Seated Pig

Bronze on marble base

Signed

23cm high by 34cm wide  
by 21cm deep

£400-600



621

**Clive Fredriksson**

Tortoise

Wood

50cm high by 109cm wide  
by 61cm deep

£400-600



622

**Paul Jenkins**

Walking Fox

Bronze, 16 of 22

47cm high by 69cm wide  
by 26cm deep

£1200-1800



623

**Ptolemy Elrington Platy**  
(born 1965)

Hubcaps

52cm high by 20cm wide  
by 65cm deep

£600-800

624

**Paul Jenkins**

Sitting Fox

Bronze

11 of 22

53cm high by 28cm wide  
by 21cm deep

£1200-1800



For details of our buyers premium which is added onto the hammer price together with any other applicable charges please refer to our guide for prospective buyers





625  
**Martin Scorey**  
 Red Chin  
 Wood, metal and glass  
 Unique  
 87cm high by 34cm wide  
 by 20cm deep  
 £400-600



626  
**Martin Scorey**  
 Red and White Checkered  
 Mask  
 Wood and steel  
 Unique  
 110cm high by 43cm wide  
 by 24cm deep  
 £400-600



627  
**Martin Scorey**  
 Neptune  
 Wood, metal and glass  
 Unique  
 75cm high by 31cm wide  
 by 20cm deep  
 £400-600



628  
**Martin Scorey**  
 Warrior  
 Wood and metal  
 Unique  
 150cm high by 50cm wide  
 by 30cm deep  
 £400-600



629  
**Carole Peace**  
 Forward Fold  
 Bronze resin  
 Signed 'Anime'  
 Edition 73 of 250  
 15cm high by 40cm wide  
 by 15cm deep  
 £200-400



630

**Anon**

Lady Godiva

Bronze

100cm high by 110cm  
wide by 27cm deep

£1200-1800



631

**Anon**

Freya

Bronze

100cm high by 28cm wide  
by 115cm deep

£1200-1800

632

**Ann Vrielinck, born  
Belgium 1966**

Team spirit

Bronze

Signed and numbered  
from an edition of 49

126cm high by 135cm  
wide by 30cm deep

£4000-6000



For details of our buyers premium which is added onto the hammer price together with any other applicable charges please refer to our guide for prospective buyers



633

**Isaac Kahn**

Repose

Bronze

Signed *I.Kahn A.P*

Edition 3 of 4

116cm high by 50cm wide by 40cm  
deep

£4000-6000



634

**Maria Bayardo**

IL Bacio

Bronze

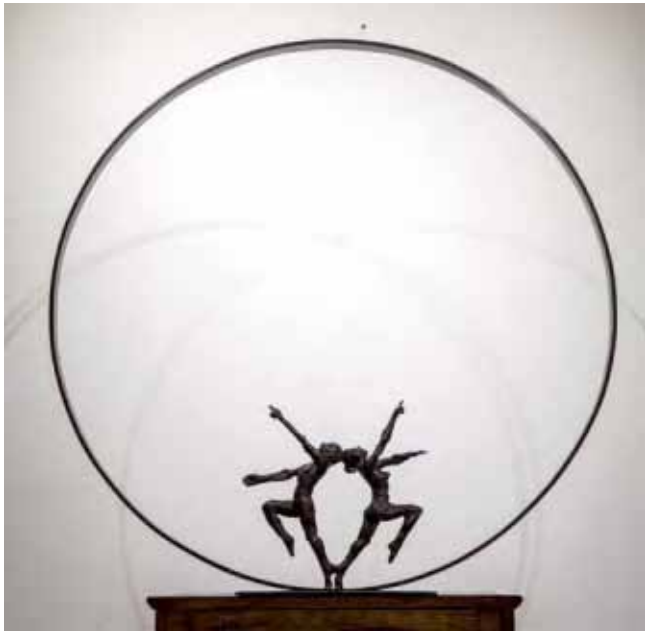
Signed edition *P/A II of IV*

180cm high by 38cm wide  
by 30cm deep

£10,000-15,000



For details of our buyers premium which is added onto the hammer price together with any other applicable charges please refer to our guide for prospective buyers



635

**Jacques Vanroose**

The Swing

Bronze

Signed and numbered  
from edition of 75

85cm high by 84cm wide  
by 20cm deep

£1200-1800

637

**Harriet Mead, born 1969**

Hare on Shovel, Junk Hare  
on Shovel

Found steel objects

Unique

49cm high by 26cm wide  
by 77cm deep

£2000-4000

636

**Ruth Moilliet**

Allium

1m diameter

£3000-5000



638

**Guy Buseyne, born 1961**

Samen

Bronze, variegated green-brown patination

Foundry stamped

58cm high by 65cm wide by 43cm deep

£2000-3000

639

**Innocent Nyashenga**

Sleeping Bird Bath

Leopard Stone

28cm high by 70cm wide by 45cm deep

£1500-2000

640

**R Josarama**

Strong Family

Springstone

Signed

47cm high by 92cm wide by 28cm deep

£1500-2500



For details of our buyers premium which is added onto the hammer price together with any other applicable charges please refer to our guide for prospective buyers





641  
**Martyn Barratt**  
 Wave  
 Kiln Formed Glass  
 Unique  
 93cm high by 55cm wide by 20cm deep  
 £4000-6000



642  
**Michael McManus**  
 Burr Elm Angel  
 Unique  
 91cm high by 62cm wide by 27cm deep  
 £1500-2500



643

643

**A bronze stylised saxophone player**

modern  
on marble base  
60cm high  
£200-400



644

645

**Chris Hindley**

Heron  
Carved and painted wood  
94cm high by 33cm wide  
by 12cm deep  
£400-600



645



646

644

**Bob Oaks**

Bullrush  
Forged steel  
Unique  
88cm high by 43cm wide  
by 28cm deep  
£400-600

646

**Carol Peace**

Waiting  
Bronze Resin  
35cm high by 15cm wide  
by 11cm deep  
£200-400



647

647

**Nicholas Moreton  
(b1955): Moses in the  
basket**

Ancestor limestone with  
canvas awning  
27cm high by 71cm long

The rope like appendage  
trailing down from  
he newly born child  
represents the umbilical  
cord

*(see website for additional  
image)*

£200-400

For details of our buyers premium which is added onto the hammer price together with any other applicable charges please refer to our guide for prospective buyers



648

**Fungai Dodzo**

Caring for young ones

Opal Stone

Signed

136cm high by 80cm wide  
by 60cm deep

£4500-5500

649

**Art Deco Monkey**

Bronze

17cm high by 13cm wide  
by 9cm deep

£400-600

650

**Back to Back**

Bronze

Signed 'JP' and numbered

36cm high by 25.5cm  
wide by 8cm deep

£400-600

651

**Katie Dixon**

Angel

Composition stone on  
pedestal

Mongrammed KD

114cm high

£250-400





652

**Bob Campbell**

Chain, hook and Tank  
Caterpillar track chair

Steel

Unique

90cm high by 76cm wide  
by 55cm deep

£1200-1800



653

**Root Sculpture**

Teak

Unique

190cm high by 165cm  
wide by 40cm deep

£1500-2500



654

**Ruth Moilliet**

Bud - red and gold

Stainless steel and  
anodised aluminium

Original edition

1.2m high by 80cm wide  
by 80cm deep

£2000-3000

For details of our buyers premium which is added onto the hammer price together with any other applicable charges please refer to our guide for prospective buyers



655  
**Eighteen**  
 Bronze, green patina  
 Signed *Guy*  
 76cm high  
 £1200-1800



656  
**Nineteen**  
 Bronze with a variegated green patination  
 82cm high by 56cm wide  
 £1200-1800



657  
**▲Walenty Pytel**  
 Hawk  
 Steel  
 Unique  
 74cm high by 30cm wide by 30cm deep  
 £800-1200



658

**Frederick Andrews**

Aeolus I - a sculptural instrument

A combination of hand forged steel, aluminium, bronze and stainless steel

130cm high by 50cm wide

£1000-2000

659

**Martin Scorey**

Red King

Wood and metal

150cm high by 33cm wide by 20cm deep

£400-600



659



660

660

**Martin Scorey**

Red Emperor

Wood and metal

160cm high by 47cm wide by 30cm deep

£400-600

661

**John Cox**

Pheasant

Bronze

49cm high by 71cm wide by 15cm deep

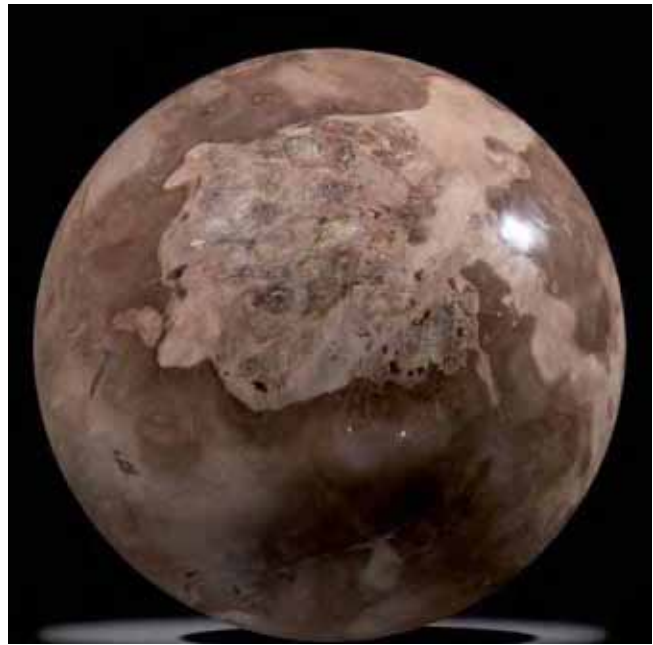
£600-800



661

For details of our buyers premium which is added onto the hammer price together with any other applicable charges please refer to our guide for prospective buyers





662

**An amethyst geode with  
calcite crystals**

Brazil

29cm by 27cm

£800-1200

664

**A large fossil wood  
sphere**

Indonesia

29cm diameter

£1000-1500

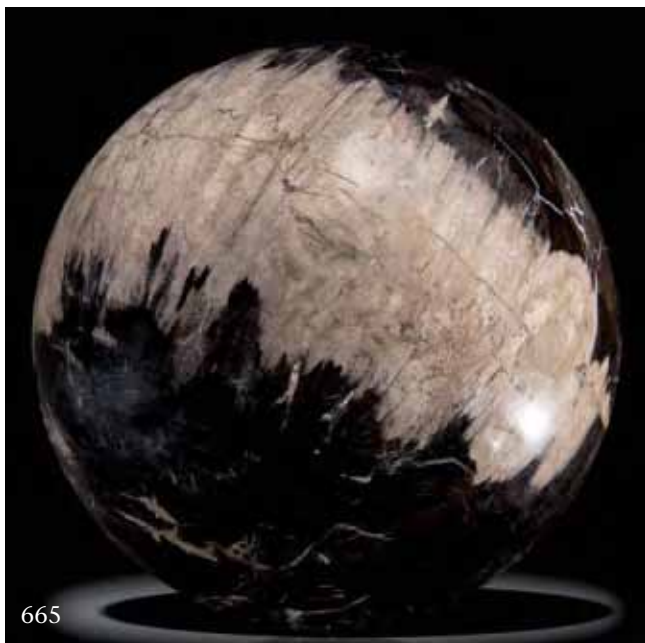
663

**A Pinolite disk**

Austria

29cm diameter

£350-450



665  
**A large fossil wood sphere**  
 Indonesia  
 28cm diameter  
 £1000-1500



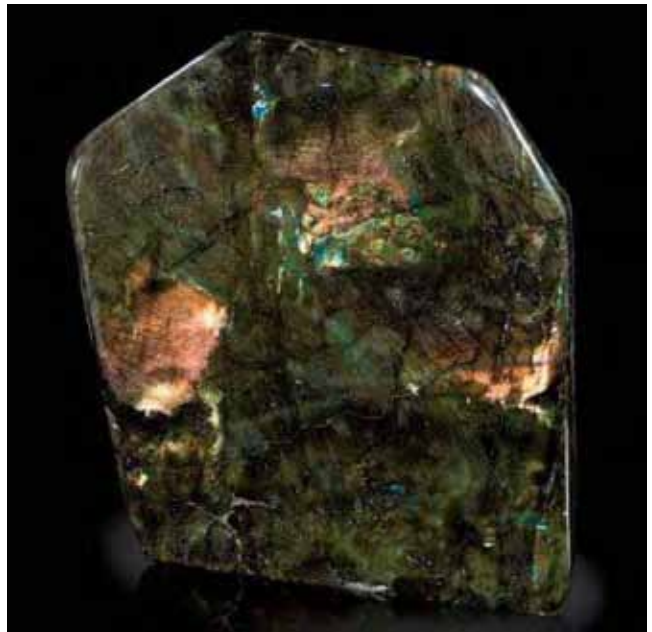
667  
**A large fossil Lepidodendrom wood sphere**  
 Pennsylvania, USA, Carboniferous,  
 18cm diameter  
 Lepidodendrom was one of the commonest trees in the abundant forests of the carboniferous period but it is extremely rare to find an example with such fine detail  
 £500-700

666  
**A Preseli stone sphere**  
 16cm diameter  
 £600-800



667

For details of our buyers premium which is added onto the hammer price together with any other applicable charges please refer to our guide for prospective buyers



668

**An amethyst sphere**

India

on metal stand

15cm diameter

£500-700

670

**A labradorite specimen**

Madagascar

24cm high

£500-700

669

**An agate specimen**

24cm high

£500-700





671

**A fossil wood sphere**

Madagascar, Triassic,  
225mya

23cm diameter, 18.7kg

£650-850



672

**An ocean jasper freeform**

Madagascar

24cm, 7.2kg

£300-400

673

**A malachite freeform**

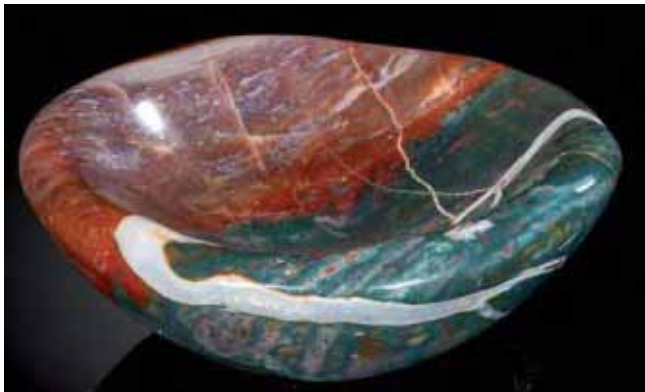
Congo

20cm wide

£350-450



For details of our buyers premium which is added onto the hammer price together with any other applicable charges please refer to our guide for prospective buyers



674

**A large red amethyst bowl**

36cm wide

£500-700

677

**A red jasper freeform**

Southern Africa

37cm high

£600-800

675

**A jasper bowl**

19cm

£250-400

676

**A collection of six mineral spheres**

including K" Cobra jasper and fossil wood

the largest 10cm diameter

£300-500



678

**A red jasper freeform**

Southern Africa

27cm high

£500-700



679

**A large mookaite slice**

Australia

44cm wide

£500-700

680

**Two mookaite slices**

Australia

the largest 26cm wide

£150-250



For details of our buyers premium which is added onto the hammer price together with any other applicable charges please refer to our guide for prospective buyers





681

**A pair of Amethyst slices  
on metal stands**

Brazil

overall 121cm

£1000-1500

683

**A large amethyst bed**

Brazil

47cm by 52cm

£1250-1550

682

**A large amethyst bowl**

Brazil

39cm wide

£250-400



684

**A crazy lace agate  
freeform**

20cm high

£500-700



685

**A set of four graduated  
Agate slices on stands**

Brazil

39cm wide

£500-700

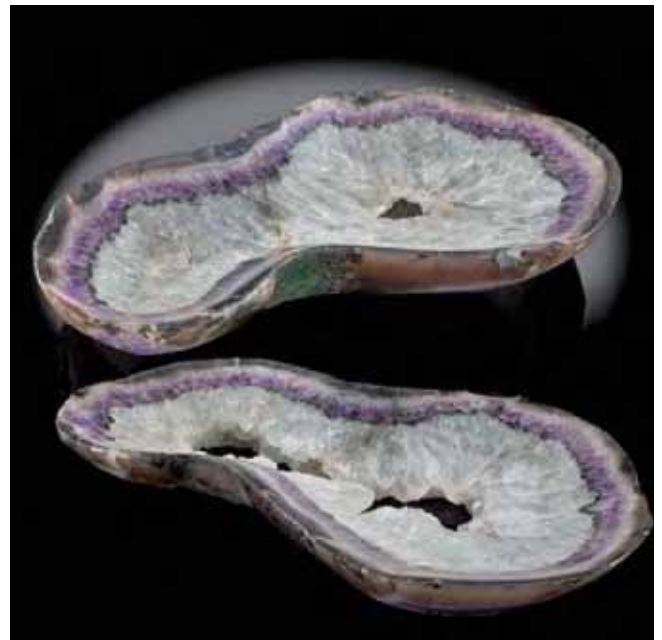
686

**A set of two amethyst  
shallow bowls**

Brazil

each 39cm wide

£500-800



For details of our buyers premium which is added onto the hammer price together with any other applicable charges please refer to our guide for prospective buyers



687

**A large fossilised wood branch section**

Indonesia, Triassic

79cm

£1200-1800

689

**A large fossilised wood slice**

Arizona, Triassic

53cm wide

£1300-1500

688

**A unusual fossil wood branch**

Burma, approx. 100 mya

84cm long

£500-800



690

**An Amethyst “butterfly”  
on metal stand**

Brazil

83cm high overall

£850-1250



691

**An amethyst freeform on  
metal stand**

Indonesia

28cm diameter

£1000-1500

692

**A serpentine freeform**

Pakistan

27cm, 10kg

£150-250



693

**A banded ironstone  
freeform**

South Africa,  
approximately 2.5 bya

30cm, 9.5kg

£400-600

For details of our buyers premium which is added onto the hammer price together with any other applicable charges please refer to our guide for prospective buyers

694

A primitive rhino (*Caenopus  
accidentalis*) skull

South Dakota, Eocene

51cm wide

£5000-7000





695

**A rare Hyenadon skull  
and paw on matrix**

Dakota, Eocene

the skull 21cm wide

£1700-1800



696

**A large polished  
Phyloceras ammonite**

Madagascar, Triassic

41cm

£1200-1400



697

**A cleoniceras ammonite**

Madagascar

25cm

£500-700

For details of our buyers premium which is added onto the hammer price together with any other applicable charges please refer to our guide for prospective buyers





698  
**An impressive  
 amethyst and calcite  
 specimen**  
 Brazil  
 on metal stand  
 34cm wide  
 £500-700

699  
**A nephrite jade  
 freeform**  
 Pakistan  
 37cm, 20kg  
 £500-800

700  
**A Desert rose  
 specimen**  
 Sahara  
 49cm wide  
 £100-200  
 701  
**A moss agate freeform**  
 32cm high  
 £600-800



702

**A King cobra jasper sphere**

20cm diameter, 11.6kg  
£500-800



703

**A King cobra jasper pyramid**

23cm by 23cm, 11.4kg  
£400-600



704

**A collection of five mineral eggs**

the largest 15cm high  
£350-450

705

**A serpentine bowl**

Pakistan

22cm diameter

£50-80



For details of our buyers premium which is added onto the hammer price together with any other applicable charges please refer to our guide for prospective buyers



707



708

706

**A set of 8 mineral specimen spheres**

including Labradorite 16.3cm, Fluorite 15.2cm, polychrome jasper 14.5cm, Apatite 14.6cm and Kambaba jasper 16.3cm

£800-1200

707

**A dinosaur egg, Oviraptor spp.**

China, Cretaceous

15cm

£500-800

708

**A dinosaur egg, Oviraptor spp.**

China, Cretaceous

15cm

£500-800

709

**A Chrysanthamum stone**

Chinese

on wooden stand

44cm high overall

£600-800



710

**A very large agatized  
amethyst shallow bowl**

79cm wide

£400-600



711

**A fossilised sharks tooth  
display**

in wall frame

85cm by 60cm

£600-800



712

**A sodalite and specimen  
mineral veneered table**

the top 60cm square

£500-700



713

**An agate phoenix bird  
carving**

modern

26cm

£300-500



714

**An agate dragon carving**

modern

26cm

Both of these carvings came  
from the same geode.

£400-600



713

714

For details of our buyers premium which is added onto the hammer price together with any other applicable charges please refer to our guide for prospective buyers



715

**A red amethyst sphere**

Brazil

on metal stand

16cm diameter

£600-800

717

**A large fossil wood egg**

Madagascar, Triassic

20cm high

£350-450

716

**A fossil lobster**

Indonesia, probably

Miocene

23cm long

£350-500



718

**A set of three pink  
amethyst slices on metal  
stands**

Brazil

£1000-1500

719

**A malachite freeform**

Congo

14cm high

£250-350



For details of our buyers premium which is added onto the hammer price together with any other applicable charges please refer to our guide for prospective buyers





720

**An extremely rare  
Hybodont skull  
Egertonodus Basandus**

Hastings, Lower  
Cretaceous

20cm high by 23cm wide  
by 23cm deep

Hybodonts are an extinct  
group of sharks that  
flourished for hundreds  
of millions of years from  
the Devonian period  
to the late Cretaceous.  
This example came from  
Cretaceous deposits at  
Hastings and is unusual  
in that it is in a 3D  
preparation whereas most  
others occur flat.

£10,000-15,000

721

**A collection of juvenile  
Tyrannosaurus Rex bones**

Wyoming, Jurassic

including partial Femur 61cm;  
partial Tibia 27cm; partial Ulna  
33cm; partial Fibula 35cm

T Rex is certainly the most  
iconic Dinosaur. Christie's  
recently sold a full mount  
partial skeleton for £31,000,000  
a record for any natural history  
specimen.

£4000-6000



For details of our buyers premium which is added onto the hammer price together with any other applicable charges please refer to our guide for prospective buyers

722

*A. crocodylus Siamensis*  
lower Jaw

Indonesia

on metal stand

86cm long

£4000-6000







723

A very large astroceras

Stellare ammonite

Scunthorpe, Jurassic

43cm

£10,000-15,000

For details of our buyers premium which is added onto the hammer price together with any other applicable charges please refer to our guide for prospective buyers



724

**An antique letter box with 100 different marine curiosities with species of sea urchins, seashells and brachiopods from all over the world**

*(Identification and locality of items available)*

£1250-1750



725

**A composition of various purple and green sea urchins on a sea weed background in glass dome**

Unique composition of large green and purple tropical sea urchin species, and North Sea seaweed

height 74cm

Originating from a late 19th/early 20th century French church collection.

£1500-2500



726

726

**A framed composition of a colourful selection of Scallops *Flexopecten flexuosus* (Poli 1975)**

Species of *Pectinidae* trawled South East off Chioggia, Italy at depths between 20 and 40m

the frame 50cm by 50cm by 5cm

£150-250



727

727

**A framed composition of a colourful selection of Scallops *Flexopecten glaber* (Linnaeus, 1758)**

trawled SE off Chioggia, Italy at depths between 20 and 40m

Species of *Pectinidae*

the frame 50cm by 50cm by 5cm

£150-250

728

**A framed white regular and irregular sea urchins**

white sea urchins, sand dollars and irregular urchins from around the world

the frame 50cm by 40cm by 5cm

£400-800

729

**A framed composition of various uncommon green sea urchins**

species from around the world

the frame 60cm by 40cm by 5cm

£800-1600



728



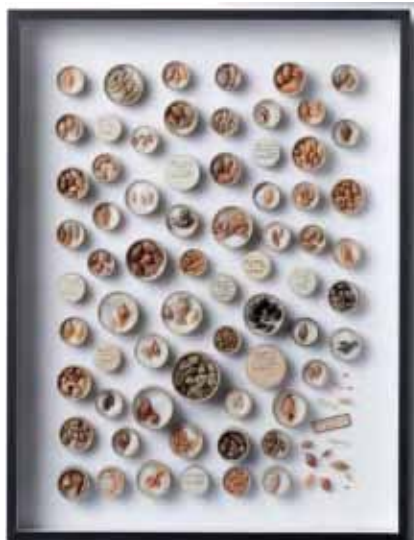
729

For details of our buyers premium which is added onto the hammer price together with any other applicable charges please refer to our guide for prospective buyers





730



732



733



731

730

**A framed composition of various uncommon purple sea urchins from around the world**

the frame 50cm by 40cm by 5cm

£500-1000

731

**A wallcase of crabs and starfish**

modern

57cm high by 67cm wide

£500-800

732

**A framed composition of Victorian Dove shell (*Columbellidae*) collection**

Originating from late Victorian missionary/reverend collector Bloch in original pill boxes with glass lids

the frame 40cm by 50cm by 5cm

Many specimens were obtained by self collecting and exchanging with contemporaries such as A.H. Cooke, Pallary, Verkrutzen etc. From the era, specimens originate from remote areas and were highly sought after.

£600-800

733

**A wall case of crabs**

recent

77cm high by 51cm wide

£600-1000



734

**A Triggerfish wall case**

modern

47cm high by 72cm wide

£500-800

735

**A very large and well preserved white sea fan Alcyonacea species of the genus Anella or Melithaea**

Sarawak, Indonesia

mounted on black metal base

100cm high

£1000-2000



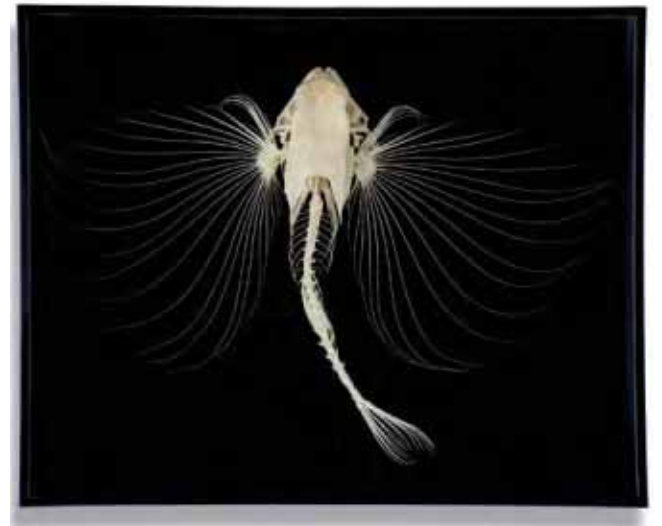
736

**A flying Gurnard fish skeleton in glass case**

recent

33cm high by 39cm wide

£500-800



For details of our buyers premium which is added onto the hammer price together with any other applicable charges please refer to our guide for prospective buyers



737

A collection of shells  
with data labels in  
specimen boxes

19th century

£250-400

738

A Hawksbill  
turtleshell (*sp*  
*Eretmochelys*  
*imbricata*)

circa 1900

62cm long by 50cm  
wide

With A10 ref 595183/01

£400-600

739

A giant clam shell  
(*Tridacna*)

late 19th century

94cm wide

£1000-200

740

A shell tower on stand  
modern

76cm high

£400-600





741

**A Marlin trophy**

modern

resin

260cm long

£500-800



742

**A conger eel by Rowland Ward in glass case**

early 20th century

41cm high by 98cm wide

Ward was unusual in that he frosted the back glass to give an impression of the fish being underwater.

£600-800

743

**A boxfish skeleton in glass case**

18cm

£150-180



For details of our buyers premium which is added onto the hammer price together with any other applicable charges please refer to our guide for prospective buyers



744

**Pashley of Norfolk: A case of three Razorbills**

late 19th century

with label to rear

50cm high by 78cm wide

*Provenance:* Ex Connop collection

£500-800

745

**A case of Guillemots**

late 19th century

54cm high by 71cm wide

£300-500

746

**A full mount Otter**

early 20th century

78cm wide

£150-250

747

**A full mount Brown Pelican**

late 20th century

72cm high

£300-500

748

**A cased cuckoo**

late 19th century

28cm high by 38cm wide

£150-250





749

**Deyrolle, Paris: A collection of beetles**

early 20th century

36cm high by 26cm wide

£300-500



751

**A collection of world butterflies**

early 20th century

21cm high by 34cm wide

£150-250



750

**A wall case of Hawk moths**

recent

59cm square

£500-800

752

**An oval dome of nine butterflies**

modern

53cm high

£300-500



753

**An oval dome of four butterflies**

modern

53cm high

£300-500



For details of our buyers premium which is added onto the hammer price together with any other applicable charges please refer to our guide for prospective buyers





754

**A carved fallow deer head**

probably German, circa  
1880

71cm by 102cm

£400-600



757

**A carved fallow deer head**

probably German,  
circa 1880

65cm by 82cm

£400-600



755

**A massive set of Red deer antlers on skull**

recent

126cm by 128cm

£500-800



756

**A set of Caribou antlers on plaque**

20th Century

91cm by 88cm

£300-500

758

**A large Cape buffalo trophy**

mid 20th century

110cm

£300-500





759

**A massive set of Red deer antlers on shield**

recent

117cm by 84cm

£500-800



760

**A set of Pere David's deer antlers on shield**

modern

115cm by 82cm

£300-500



761

**A large Cape Buffalo trophy on shield**

modern

83cm high by 90cm wide

£300-500

For details of our buyers premium which is added onto the hammer price together with any other applicable charges please refer to our guide for prospective buyers



762

**A miniature Centaurs  
skeleton (made up)**

modern

82cm high by 49cm wide

£6000-8000



763

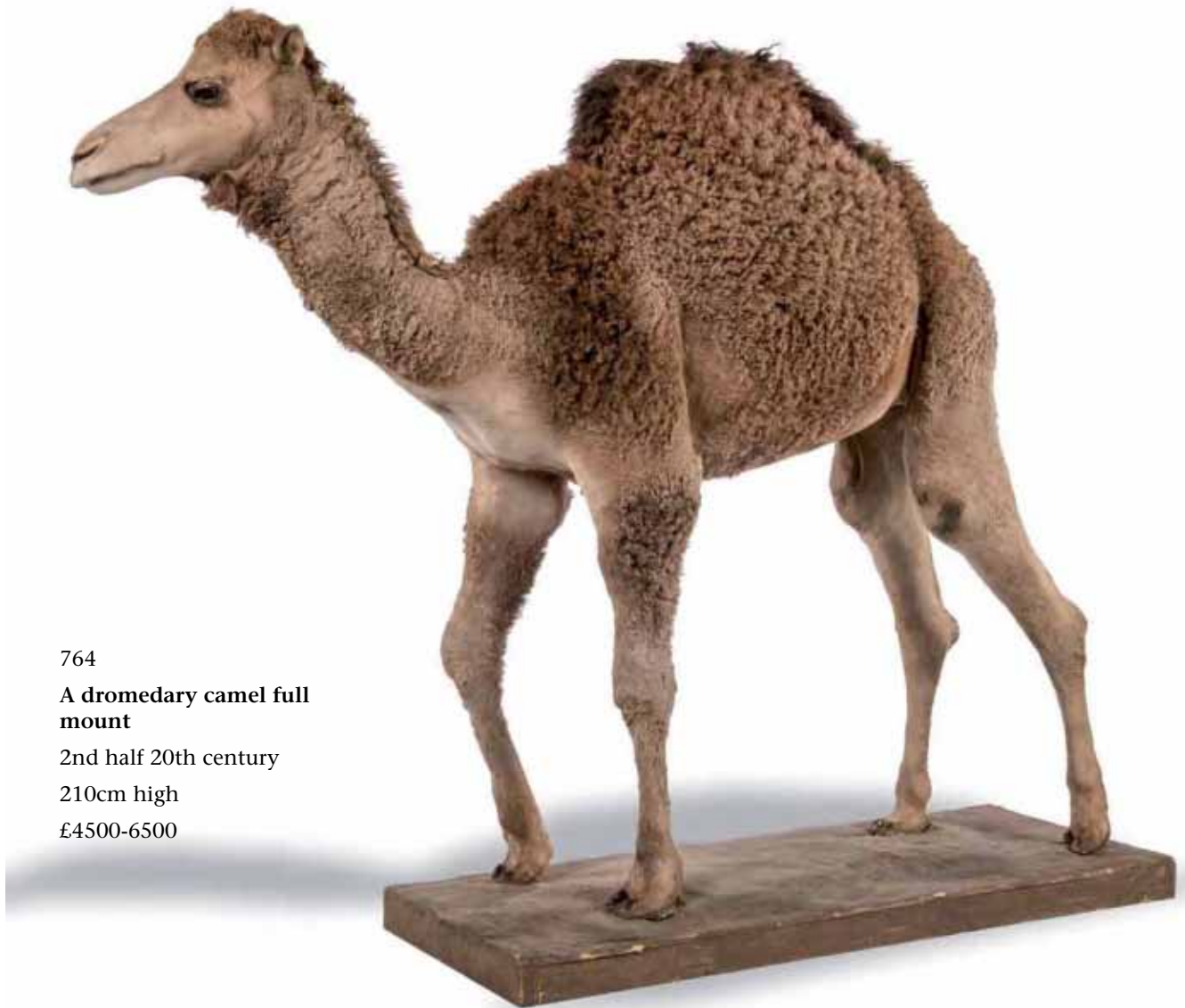
**A miniature full mount  
centaur**

(made up)

57cm high

£3000-5000





764

**A dromedary camel full  
mount**

2nd half 20th century

210cm high

£4500-6500

For details of our buyers premium which is added onto the hammer price together with any other applicable charges please refer to our guide for prospective buyers



765

**A large replica Rhino head**

modern

114cm high by 122cm diameter

£500-800



766

**An Antler chair**

2nd half 19th century

in the manner of Hans Rampendahl

89cm high

*Provenance:* Phillips Chester 2001, sold for £4,400. Rampendahl exhibited at the Great Exhibition and his designs inspired other furniture makers to produce similar antler furniture.

£2000-3000



767

**Rowland Ward: An  
elephants foot humidior**

circa 1900

with partial label to  
interior

21cm by 39cm by 32cm

£500-800



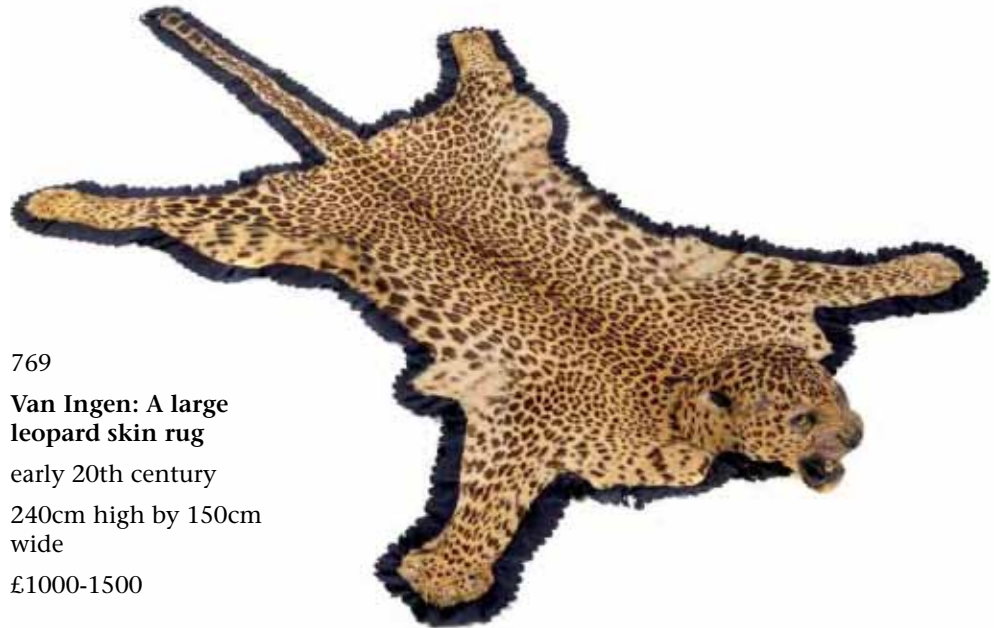
768

**A collectors' cabinet**

made up from an early  
20th century mahogany  
pot cupboard

82cm high by 59cm wide

£600-800



769

**Van Ingen: A large  
leopard skin rug**

early 20th century

240cm high by 150cm  
wide

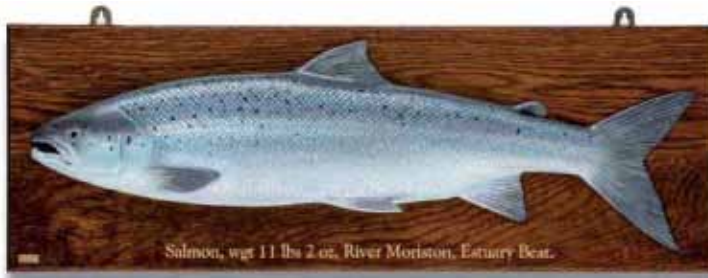
£1000-1500

For details of our buyers premium which is added onto the hammer price together with any other applicable charges please refer to our guide for prospective buyers





770



773

772

**A full mount hybrid  
goose**

mid 20th century

62cm high

£200-400

773

**R Brookes: A carved  
salmon on plaque**

recent

85cm wide

£600-800

774

**A full mount mute swan  
on stand**

recent

115cm high

£600-800



771



774

770

**R Brookes: A carved  
grayling on plaque**

recent

63cm wide

£600-800

771

**A Black swan full mount**

recent

74cm high

£400-600



772



775

**A Python skeleton in glass case**

recent

60cm high

£600-900



778

**Two Mammoth molars**

Pleistocene, North Sea

the largest 25cm

£250-400



779

**A collection of small meteorite fragments**

£200-300

776

**A set of 3 exploded beetles**

modern

the largest 34cm high by 32cm wide

£300-500

780

**A decorative display of Ostrich and Emu eggs on a platter**

40cm diameter

£200-300

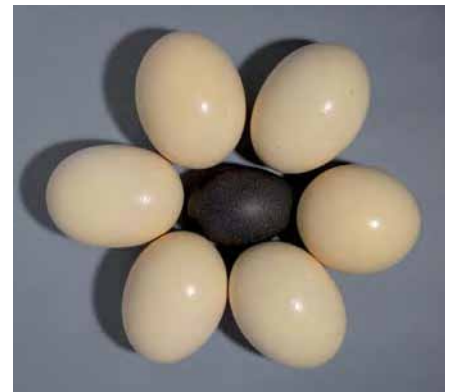
777

**A Dalmation puppy on stand**

modern

124cm overall

£900-1200



For details of our buyers premium which is added onto the hammer price together with any other applicable charges please refer to our guide for prospective buyers

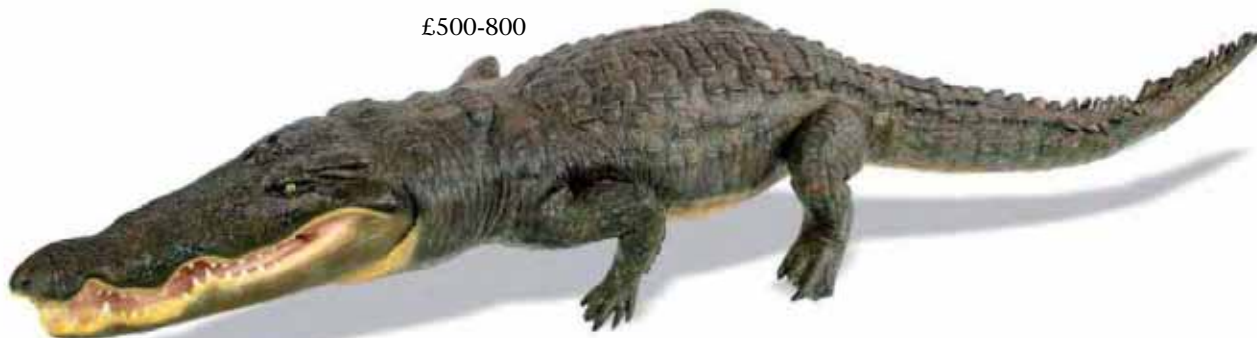


781  
**A Moose head mount**  
 recent  
 120cm high by 113cm wide  
 £2500-4000



783  
**A German hunting trophy possibly depicting an Aurochs**  
 19th century or earlier  
 101cm high  
 £250-400

782  
**A large replica crocodile**  
 modern  
 292cm long  
 £500-800







784

**A Mouflon Ram full mount on base**

mid 20th century

113cm high

*Provenance:* Ex Lodder collection

£500-800



785

787

**A Punjab Urial on Rowland Ward shield**

early 20th century

with label '*Tbex (Goat Tribe), Shot in Central India about 1903 by Gen de O'Grady*

74cm high

£400-600



786

785

**A Sardinian Ram**

mid 20th century

87cm high

*Provenance:* Ex Lodder collection

£500-800

788

**A Mouflon rams head with large horns, modern**

58cm high by 48cm wide

£300-500



789



787

786

**A Barbary sheep**

20th century

155cm high by 146cm wide

£800-1200

789

**Rowland Ward: A Reedbuck trophy on shield**

label to verso with details  
*Northern Nigeria*

55cm high

£300-500



788

For details of our buyers premium which is added onto the hammer price together with any other applicable charges please refer to our guide for prospective buyers



790

**A zebra skin**

modern

260cm by 160cm

£300-500



791

**A Zebra head**

recent

97cm high by 83cm deep

£600-1000

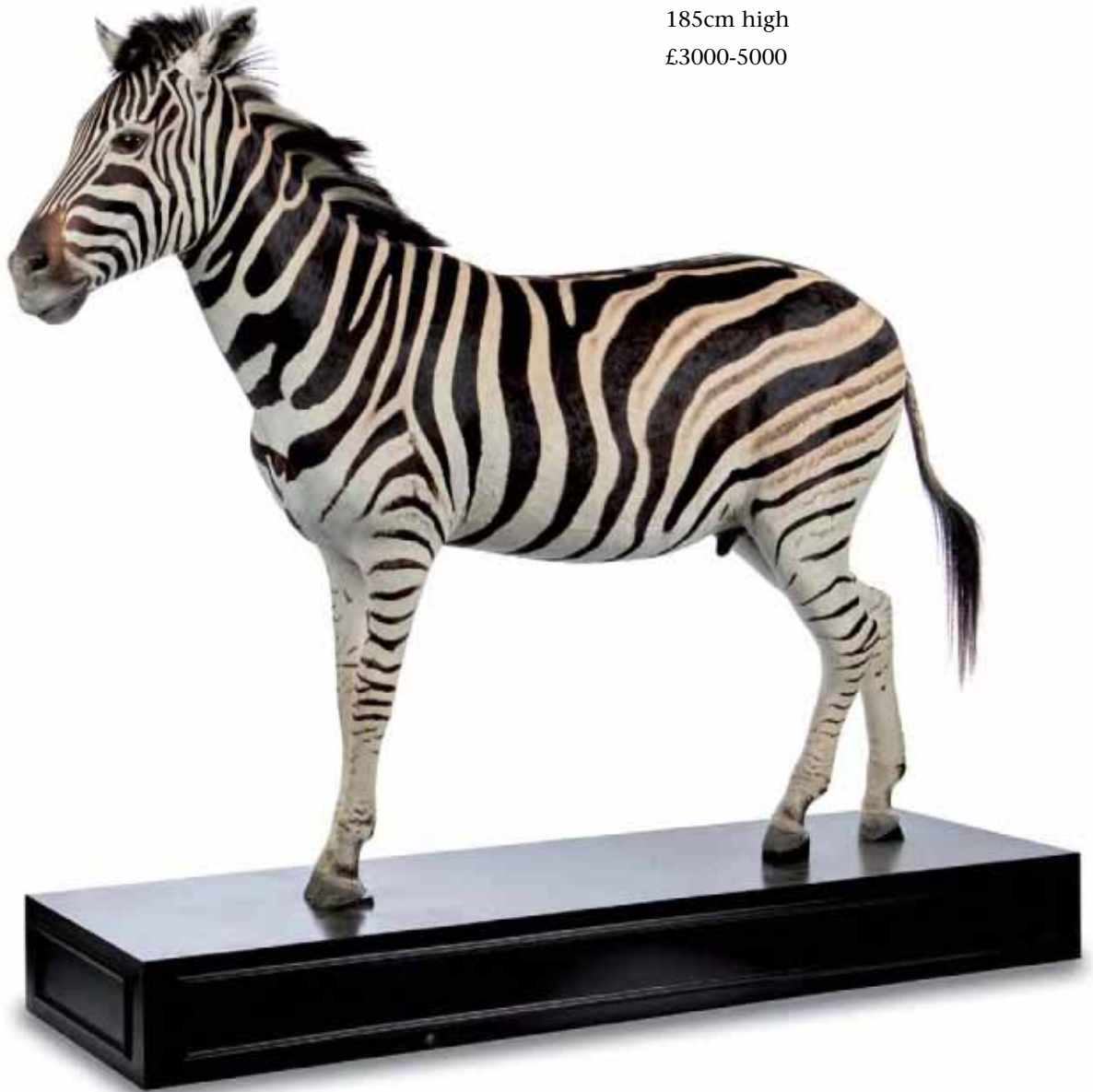
792

**A full mount Zebra**

recent

185cm high

£3000-5000



For details of our buyers premium which is added onto the hammer price together with any other applicable charges please refer to our guide for prospective buyers





793

**A case of a stoat  
reputedly by Ponchaud  
of Christchurch**

circa 1900

27cm high by 40cm wide

£250-400

795

**Anthony Armistead: A  
Blue breasted kingfisher  
in wall case**

recent

56cm high by 52cm wide

£400-600

794

**A stoat in ermine by  
Pratt & Sons of Brighton**

early 20th century

label to rear

28cm high by 32cm wide

£200-300



796

**An unusual family of kingfishers**

circa 1910

64cm by 66cm

£250-400



798

**A superb parrot on stand**

recent

40cm high overall

£300-400



797

**A pair of lovebirds in glass dome**

19th century

43cm high

£400-600

799

**A Monkey (*Golden bellied mangabey*) on bicycle**

recent

44cm

£900-1200



For details of our buyers premium which is added onto the hammer price together with any other applicable charges please refer to our guide for prospective buyers

800

**A full mount Honey  
Badger**

recent

80cm long

£800-1200



801

**A Nile Lechwe full  
mount probably by  
Zimmerman of Nairobi**

2nd half 19th century

135cm high by 167cm  
wide

£1000-1500







802

**A wall mounted puma  
on a beam**

recent

140cm wide

£1200-1800



803

**A Ugandan Kob probably  
by Zimmerman of  
Nairobi**

2nd half 19th century

160cm high by 175cm  
wide

£1000-1500

For details of our buyers premium which is added onto the hammer price together with any other applicable charges please refer to our guide for prospective buyers



804

**A Peacock wall mount**

modern

120cm

£400-600

805

**A white Peahen**

modern

68cm high

£600-800



806

**An impressive case of  
two fighting cocks**

circa 1980s

50cm high by 120cm wide

£600-800

807

**A large Cockerel skeleton  
in case**

recent

58cm high

£250-400



For details of our buyers premium which is added onto the hammer price together with any other applicable charges please refer to our guide for prospective buyers





808

**A preserved head of a  
Kangaroo on shield**

dated 1890

29cm high

This highly unusual  
trophy is twentieth  
century in origin.

£200-300

809

**A cast of Thylacine skull  
by Luke Williams in an  
all glass case**

recent

36cm high by 35cm wide

£300-500



810

**An albino Bennett's  
wallaby on stand**

recent

77cm high by 104cm wide

£400-600





811

**811**  
**A Red-flanked duiker**  
**head mount**

recent

35cm wide on shield

£200-400



812

**812**  
**A female Kirk's dik-dik**  
recent

28cm high

£200-300



813

**813**  
**Two Gerrard's kob head**  
**mounts on shields**

circa 1900

the larger 74cm

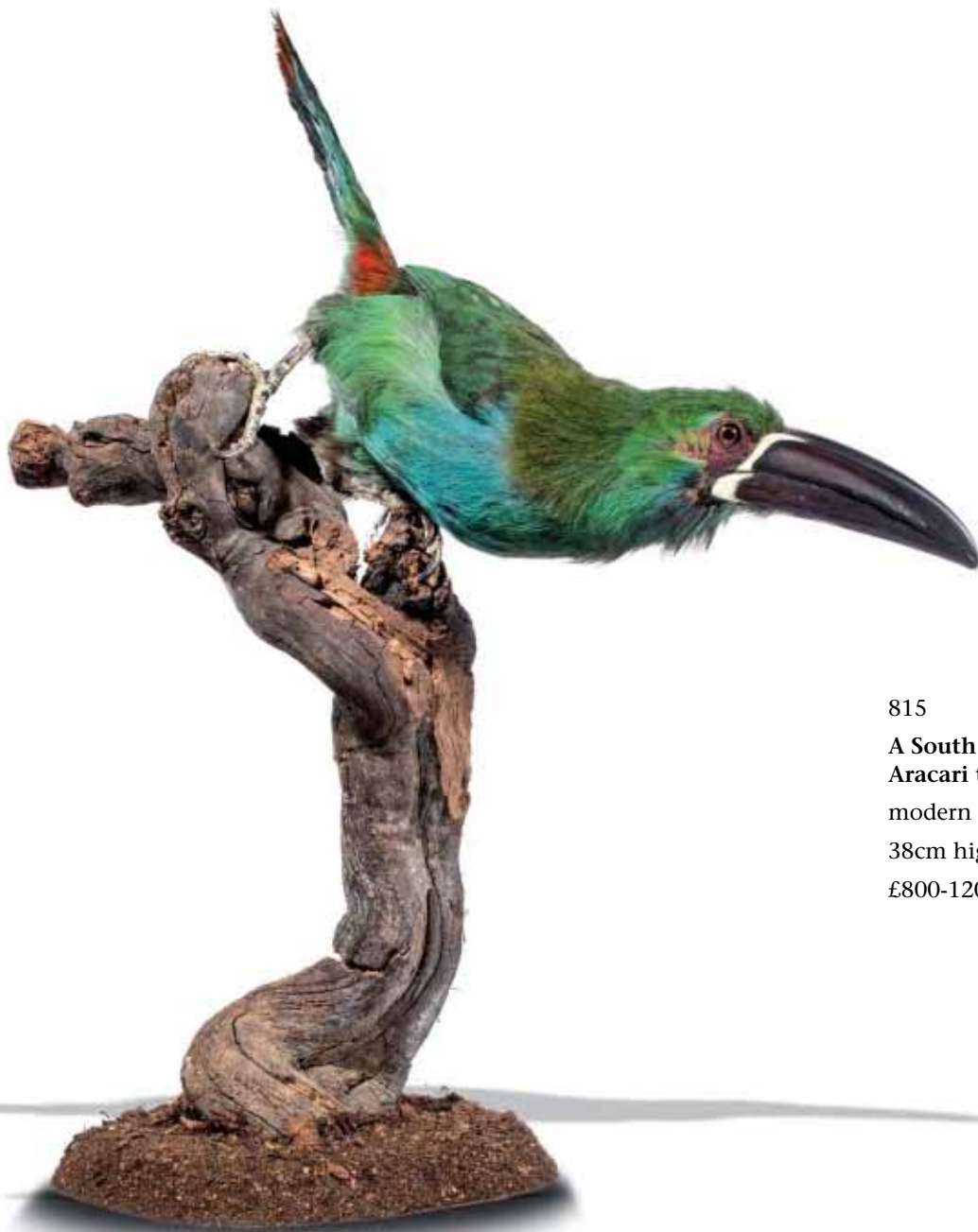
£300-500



814

**814**  
**A cased Muntjac deer**  
early 20th century  
60cm by 71cm  
£200-400

For details of our buyers premium which is added onto the hammer price together with any other applicable charges please refer to our guide for prospective buyers



815

**A South American Green  
Aracari toucan**

modern

38cm high

£800-1200





816  
**Two unusual  
 bleached full mount  
 lizards**  
 modern  
 in wall case  
 20cm by 15cm  
 £200-300

817  
**Two Rosella parrots**  
 recent  
 23cm high overall  
 These highly unusual  
 and beautiful colour  
 variants date from  
 the early twentieth  
 century, and are  
 very different from  
 normally coloured  
 Rosellas.  
 £400-600



818  
**A Coyote full  
 mount on stand**  
 recent  
 99cm wide  
 £400-600



For details of our buyers premium which is added onto the hammer price together with any other applicable charges please refer to our guide for prospective buyers



819  
**A Grey-headed hanging bat in glass dome**  
 recent  
 53cm high  
 £1000-1500



820  
**A cast of a Great Auk skeleton by Luke Williams**  
 in a very large dome 85cm high  
 The Great Auk is a brilliantly put together and scientifically important specimen achieved only after many hours of painstaking research. There are very few Great Auk skeletons in the museums of the world and this model had been constructed in an entirely convincing and scientifically accurate manner  
 £1200-1800



821  
**A white Rhea chick in  
 glass dome**  
 recent  
 50cm high  
 £900-1200



822  
**A young silver leafed Langur  
 monkey in glass dome**  
 recent  
 69cm high  
 £2000-3000

For details of our buyers premium which is added onto the hammer price together with any other applicable charges please refer to our guide for prospective buyers





824



825



827



823



826

823  
A Gemsbok wall mount  
modern  
107cm high by 32cm  
diameter  
£400-600

824

Rowland Ward:  
A Warthog wall  
mount

early 20th century  
40cm high by 47cm  
diameter  
£500-800

825

A Blesbok wall  
mount

modern  
94cm high by 53cm  
diameter  
£400-600

826

A pair of Rams head  
trophies on shields

modern  
40cm high by 33cm  
diameter  
(one showing)  
£500-800

827

A White tailed gnu  
wall mount

modern  
53cm high by 70cm  
diameter  
£400-600



828

**828**  
**A Nubian Ibex trophy on shield**

dated 1911

60cm high by 37cm wide

£200-400



829

**829**  
**Rowland Ward: A Sable antelope trophy on shield**

early 20th century

103cm high

£400-600



830

**830**  
**A large Sable antelope trophy on shield**

modern

107cm high by 40cm diameter

£300-500



831

**831**  
**A Siberian Ibex trophy**  
20th century  
85cm high by 55cm deep  
£300-400

For details of our buyers premium which is added onto the hammer price together with any other applicable charges please refer to our guide for prospective buyers



832

833



835



836

836

**A lion skull**  
19th century  
with wooden mount  
36cm  
£400-600



834

832

**A mummified domestic cat**

possibly Medieval  
44cm long  
£300-500

833

**A camel and zebra skull**

recent  
the camel 54cm wide; the zebra 49cm wide  
£400-600

834

**A large camel bone necklace**

Congolese by repute  
£200-300

835

**A mummified cat**

English, possibly Medieval  
65cm by 41cm  
£600-1000



# Summers Place Auctions Ltd

SALE NUMBER GE101

**BIDS MUST BE RECEIVED BY  
19th May, 2021 by 4PM BST**

## IMPORTANT

The winning bid will be the highest left on each lot above the reserve. Bids are non sequential and the highest bid left is the price at which the lot is sold plus buyers premium and any VAT liable. In the event of two identical winning bids being left on the same lot, the earliest received bid shall take precedence. Summers Place Auctions decision on which is the winning bid shall be final.

Clients wishing to bid on an “either or” basis should list the lots they are interested in with the price they are prepared to pay in order of preference with “OR” written between each one.

## New Clients

Please note that we  
May contact you to request a bank  
reference. In addition we will  
Require sight of a government  
Issued ID and proof of address  
prior to collection of purchases

Title

First name

Last name

Address

Postcode

Tel

Mobile

Email

Fax

Please write clearly and place your bids as early as possible, as in the event of identical bids, the earliest bid received will take precedence. Bids should be submitted in (£) sterling at least 24 hours before the auction closes.

## SEALED BIDDING FORM

Lot No.	Lot Description	Sealed bid Sterling price (excluding premium & VAT)

**I agree to be bound by Summers Place Auctions Ltd “Condition of Business” as published in the catalogue which govern all purchases at auction, and to pay the published Buyer's Premium on the hammer price plus any applicable taxes.**

I consent to the use of this information and any other information obtained by Summers Place Auctions  
I am aware that all telephone bid lines may be recorded.

Payment is due immediately after the sale in pounds sterling. Full details on how to pay are included in our Guide for Buyers. If you wish to pay for your purchases by card please complete the details below and your Card will be charged.

NAME ON CARD . . . . .

DEBIT CARD NUMBER. . . . .

EXPIRY DATE. . . . .

ISSUE NUMBER.....(SWITCH ONLY) 3 LAST DIGIT OF SECURITY CODE . . . . .

**Signed** \_\_\_\_\_ **Dated** \_\_\_\_\_

## GUIDE FOR ABSENTEE BIDDERS FOR SEALED BID AUCTION

### SEALED BID AUCTION LOTS 400 to 836

All sealed bids must be with us, at the latest, by **19th May 4.00pm GMT** since the bids will be opened on the 19th May. The winning bid will be the highest left on each lot above the reserve. Bids are non sequential and the highest bid left is the price at which the lot is sold plus buyers premium and any VAT liable. In the event of two identical winning bids being left on the same lot, the earliest received bid shall take precedence. Summers Place Auctions decision on which is the winning bid shall be final. Winning bidders will be invoiced after the bids are opened.

Sealed bids, when placed by telephone, are accepted only at the caller's risk and must be confirmed by letter or e-mail to the Bid Department.

Successful bidders will receive an invoice detailing their purchases and giving instructions for payment and clearance of goods.

All bids are subject to the conditions of business applicable to the sale, a copy of which is available from Summers Place Auctions. Conditions of Business particularly relevant to buyers are also set out in the sale catalogue.

We reserve the right to seek identification of the source of funds received.

In connection with the management and operation of our business and the marketing and supply of Summers Place Auctions Companies' services, or as required by law, we may ask clients to provide personal information about themselves or obtain information about clients from third parties (e.g. credit information). If clients provide Summers Place Auctions with information that is defined by law as "sensitive", they agree that Summers

Place Auctions may use it for the above purposes. Summers Place Auctions will not use or process sensitive information for any other purpose without the client's express consent.

In order to fulfil the services clients have requested, Summers Place Auctions may disclose information to third parties (e.g. shippers). Some countries do not offer equivalent legal protection of personal information to that offered within the EU. It is Summers Place Auctions policy to require that any such third parties respect the privacy and confidentiality of our clients' information and provide the same level of protection for clients' information as provided within the EU, whether or not they are located in a country that offers equivalent legal protection of personal information. By signing this Sealed Bid Form you agree to such disclosure. Clients will please note that for security purposes, Summers Place Auctions premises are subject to video recording. Telephone calls e.g. telephone bidding/voicemail messages may also be recorded.

Please mail to arrive before:  
19th May, 4.00pm GMT.  
The Walled Garden, Summers Place,  
Billingshurst, West Sussex, RH14 9AB.

For Bids only:  
Tel. +44 (0)1403 331 331

Email for Sealed Bids only:  
sealedbids@summersplaceauctions.com

## GLOSSARY OF TERMS

The following are examples of the terminology used in this catalogue. Any statement as to authorship, attribution, origin, date, age provenance and condition is a statement of opinion and is not to be taken as a statement of fact.

Please read carefully the terms of the Authenticity Guarantee and the Conditions of Business for Buyers set out in this catalogue.

### *Antonio Canova*

In our opinion a work by the artist. In the case of 19th century sculpture this indicates that the work was made in our opinion either by the artist or by a foundry or editor who had the rights to reproduce the artist's original model either during the artist's lifetime or for a defined posthumous period. (When the artist's forenames are not known, a series of asterisks, followed by the surname of the artist, whether preceded by an initial or not indicates that in our opinion the work is by the artist named).

### *Attributed to Antonio Canova*

In our opinion probably a work by the artist but less certainty as to authorship is expressed than in the preceding category.

### *Manner of Antonio Canova*

In our opinion a work in the style of the artist and of a later date

### *After Antonio Canova*

In our opinion a copy at a later date of a known work by the artist. In the 19th century this indicates that in our opinion the work was made by a foundry or editor at a later date and apparently without exclusive rights.

### *Italian 18th century*

In our opinion a work from that region and of that date.

### *Probably Italian 18th century*

In our opinion a work that is likely to be from that region and/or of that date but less certainty as to the region and/or date than is expressed in the preceding category.

### *In renaissance style*

In our opinion a work executed in the style of the renaissance but not necessarily of that period.

The term signed and/or dated and/or inscribed means that in our opinion the signature and/or date and/or inscription are original to the model or authorized by the sculptor's studio or editor but not necessarily from the hand of the artist.

The term bearing the signature and/or date and/or inscription means that in our opinion the signature and/or date and/or inscription have been added at a later date.

Dimensions are given height before width

### *Condition of lots*

Condition is only noted in the catalogue where an item is severely distressed. Prospective purchasers making commission bids without viewing the sale can be given condition reports on any lot on request.

It is essential for buyers to satisfy themselves as to the condition of lots prior to the sale and to arrange their own insurance cover against loss and damage immediately after the sale. Please refer to the Conditions of Business for Buyers.



## SUMMERS PLACE AUCTIONS AUTHENTICITY GUARANTEE

If Summers Place Auctions Ltd sells an item which subsequently is shown to be a “counterfeit”, subject to the terms below Summers Place Auctions Ltd will set aside the sale and refund to the Buyer the total amount paid by the Buyer to Summers Place Auctions Ltd for the item, in the currency of the original sale.

For these purposes, “counterfeit” means a lot that in Summers Place Auctions Ltd reasonable opinion is an imitation created to deceive as to authorship, origin, date, age, period, culture or source, where the correct description of such matters is not reflected by the description in the catalogue (taking into account any Glossary of Terms). No lot shall be considered a counterfeit by reason only of any damage and/or restoration and/or modification work of any kind (including repainting or over-painting).

Please note that this Guarantee does not apply if either:-

- (i) the catalogue description was in accordance with the generally accepted opinion(s) of scholar(s) and expert(s) at the date of the sale, or the catalogue description indicated that there was a conflict of such opinions; or
- (ii) the only method of establishing at the date of the sale that the item was a counterfeit would have been by means of processes not then generally available or accepted, unreasonably expensive or impractical to use; or likely to have caused damage to the lot or likely (in Summers Place Auctions Ltd reasonable opinion) to have caused loss of value to the lot; or
- (iii) there has been no material loss in value of the lot from its value had it been in accordance with its description.

This Guarantee is provided for a period of five (5) years after the date of the relevant auction, is solely for the benefit of the Buyer and may not be transferred to any third party. To be able to claim under this Guarantee, the Buyer must:-

- (i) notify Summers Place Auctions Ltd in writing within three (3) months of receiving any information that causes the Buyer to question the authenticity or attribution of the item, specifying the lot number, date

of the auction at which it was purchased and the reasons why it is thought to be counterfeit; and

- (ii) return the item to Summers Place Auctions Ltd in the same condition as at the date of sale to the Buyer and be able to transfer good title in the item, free from any third party claims arising after the date of the sale.

Summers Place Auctions Ltd has discretion to waive any of the above requirements. Summers Place Auctions Ltd may require the Buyer to obtain at the Buyer's cost the reports of two independent and recognised experts in the field, mutually acceptable to Summers Place Auctions Ltd and the Buyer. Summers Place Auctions Ltd shall not be bound by any reports produced by the Buyer, and reserves the right to seek additional expert advice at its own expense. In the event Summers Place Auctions Ltd decides to rescind the sale under this Guarantee, it may refund to the Buyer the reasonable costs of up to two mutually approved independent expert reports.

## GUIDE FOR PROSPECTIVE BUYERS

### 1. Buyer's Premium Rates

The buyer's premium payable by the buyer of each lot is at a rate of 25% on the first £50,000, then 20% up to £250,000 and 12% on the amount by which the hammer price exceeds £250,000, plus an amount in respect of VAT thereon (see below).

### 2. VAT on Hammer Price and Buyer's Premium and VAT Symbols in the Catalogue

#### Property with no VAT symbol

Where there is no VAT symbol, Summers Place Auctions Ltd are able to use the Auctioneer's Margin Scheme and VAT will not normally be charged on the hammer price. Summers Place Auctions Ltd must bear VAT on the buyer's premium and hence will charge an amount in lieu of VAT at 20% on this premium, which will not be shown separately on the invoice.

#### Property with a † symbol

These items will be sold under the normal UK VAT rules and VAT will be charged at 20% on both the hammer price and buyer's premium.

### **Property with a @ symbol**

It is assumed that items sold to buyers whose address is in the European Union (EU) will be remaining in the EU. The property will be invoiced as if it had no VAT symbol.

It is assumed that items sold to buyers whose address is outside the EU, will be exported from the EU. The property will be invoiced under the normal VAT rules (see 'Property with a † symbol above).

### **Property sold with a ‡ or symbol**

These items have been imported from outside the EU to be sold at auction under temporary importation. When Summers Place Auctions Ltd release such property to buyers in the UK, the buyer will become the importer and must pay Summers Place Auctions Ltd import VAT at the following rates on the hammer price:

‡ @ 5% @ 20%

Summers Place Auctions Ltd must bear VAT on the buyer's premium and hence will charge an amount in lieu of VAT at 20% on this premium, which will not be shown separately on the invoice.

### **VAT Refunds**

VAT may be cancelled or refunded on export if strict conditions are met and a fee of £30 plus VAT will be charged for this service. For advice, please contact us on 01403 331 331

### **Sales and Uses Taxes**

Buyers from outside the UK should note that local sales taxes or use taxes may become payable upon import of items following purchase (for example, the Use Tax payable on import of purchased items to certain states of the USA). Buyers should obtain their own advice in this regard.

### **Artist's Resale Right**

Purchase of lots marked with the following symbol ▲ will be subject to payment of the Artist's Resale Right, at a percentage of the hammer price calculated as follows:

Portion of the hammer price (in) Royalty Rate

From 0 to 50,000 4%

From 50,000.01 to 200,000 3%

From 200,000.01 to 350,000 1%

From 350,000.01 to 500,000 0.5%

Exceeding 500,000 0.25%

The Artist's Resale Right payable will be the aggregate of the amounts payable under the above rate bands, subject to a maximum royalty payable of €12,500 for any single work each time it is sold. The maximum royalty payable of €12,500 applies to works sold for €2 million and above. Calculation of the artist's resale right will be based on the Pounds Sterling / Euro reference exchange rate quoted on the date of the sale by the European Central Bank.

### **Property with a ♠ symbol.**

Some of these items require specialist dismantling and may not be available for immediate collection after the sale. Intending purchasers should check the status of these lots before the sale.

## **3. Before the Auction**

### **Pre-sale Estimates**

Pre-sale estimates are intended as a guide for prospective buyers but all lots can realise prices above or below the pre-sale estimates. Seller's confidential reserves are set no higher than the low pre-sale estimates, except in the rare circumstance in which the reserve has been set in a foreign currency and the exchange rate has fluctuated.

It is advisable to consult us nearer the time of sale as estimates can be subject to revision. The estimates printed in the auction catalogue do not include the buyer's premium or VAT.

### **Provenance**

In certain circumstances, Summers Place Auctions Ltd may print in the catalogue the history of ownership of a work of art if such information contributes to scholarship or is otherwise well known and assists in distinguishing the work of art. However, the identity of the seller or previous owners may not be disclosed for a variety of reasons. For example, such information may be excluded to accommodate a seller's request for confidentiality or because the identity of prior owners is unknown given the age of the work of art.

## C.I.T.E.S.

All the relevant lots in this sale have been carefully vetted, mindful of current C.I.T.E.S. regulations, concerning the sale of endangered species. We are happy to provide advice on any lots, to overseas buyers concerning export restrictions. However, it is ultimately the buyers responsibility to satisfy themselves that the correct licenses can be obtained prior to bidding.

## Condition of Lots

All lots are available for inspection and Condition Reports are available on request. However, all lots are of an age and type which means that they may not be in perfect condition and should be viewed by prospective bidders; please refer to Condition 3 of the Conditions of Business for Buyers.

## Electrical and Mechanical Goods

All electrical and mechanical goods are sold on the basis of their artistic and decorative value only, and should not be assumed to be operative. It is essential that any electrical system is checked and approved by a suitably qualified electrician, prior to use.

## 4. The Auction

Auction speeds vary, and generally average between 50 and 120 lots per hour. The auctioneer will commence and advance the bidding at levels and in increments he considers appropriate (generally in increments of approximately 10% of the previous bid) and is entitled to place a bid or series of bids on behalf of the seller up to the reserve on the lots, without indicating he is doing so and whether or not other bids are placed.

Please note Conditions 5 and 6 of the Conditions of Business for Buyers contain additional information on bidding.

## Bidding in Person

To bid at auction you must register with us to obtain a bidding number. Before the auction, fill in the form at the registration desk, provide proof of identity, and you may be given a paddle showing your bidding number. This paddle should be used for bidding. The auctioneer will note this number when you purchase a lot.

## Live Auctions

The auction takes place in the gallery with each lot displayed on a plasma screen as it is sold. Prospective purchasers are encouraged to attend the sale and must register their details with us beforehand. Bidding is by numbered paddle.

## Absentee Bids

If you cannot attend the auction we will be happy to execute written bids on your behalf, so long as you have registered your details with us beforehand. A bidding form may be downloaded from [www.summersplaceauctions.com](http://www.summersplaceauctions.com) website. A bidding form is also printed in the back of the catalogue. This service is confidential. Lots will always be bought as cheaply as is consistent with other bids, the reserves and other commission bids. To avoid confusion, the sale date, lot number and a brief description should be filled in and signed. Commission bids by email without a signature will not be accepted. In the event of identical bids, the earliest received will take precedence. Always indicate a top limit, i.e. the highest price you would bid if you were attending the auction. Don't forget that buyers premium and any VAT applicable will also be added onto your bid if you are successful. "Buy" and unlimited bids will not be accepted. Please refer to our conditions of business for buyers, which is also printed in the back of our catalogues. To ensure a satisfactory service please ensure that we receive your bids at least 24 hours beforehand.

## Telephone bids

If you cannot attend the auction, it is usually possible to bid on the telephone. You will need to have registered your details with us 5 days before the auction. As the number of telephones is limited, it is necessary to make arrangements on which lots you wish to bid on, at least 24 hours before the sale. We also suggest that you leave a maximum bid which we can execute on your behalf in the event we are unable to reach you by telephone. Please refer to our conditions of business for buyers, which is also printed in the back of our catalogues.

## Online Bidding

If you cannot attend the auction, you may wish to bid using [the.saleroom.com](http://the.saleroom.com), which will incur an additional 5% of the hammer price plus VAT at the rate imposed



### Sealed bid

For further information please see pages at the end of this section.

### Sale by private treaty

Summers Place Auctions shall, from time to time, be offering some lots for sale by Private Treaty in our architectural portfolio. These will usually comprise larger pieces of an architectural nature, which will require a longer period of planning and consultation than an auction can provide. Additionally if you are looking for a specific piece please let us know and we will use our worldwide network of trade and private clients to help source the most suitable item for you. Please contact us for further information.

### Payment

Payment is due in sterling immediately after the sale and before purchases can be released. Payments in person can be made in the saleroom on the day of the auction using mobile banking, debit cards or by cheque. Thereafter payments may also be made by electronic transfer to our bank, by post or by debit card transactions by telephone. Cash will not be accepted.

### Sterling Banker's Draft or Building Society Cheque and Electronic or Wire Transfer

Wire transfers can be made directly to our bank. Please contact us for further details. Sterling Banker's Drafts and Building Society Cheques drawn on a recognised UK bank or building society are also accepted.

### Credit/Debit Card

We are pleased to accept all major personal debit cards. Regrettably we are no longer able to accept credit cards

### Sterling Cheque

Please note that we require seven days to clear sterling cheques where the amount exceeds the cheque card guarantee limit, unless special arrangements have been made with the auctioneer in advance of the sale (normally the presentation of a letter of guarantee from your bank). We always reserve the right to hold goods until a cheque is cleared.

### Collection and Storage

On receipt of cleared funds, lots can be collected from the Walled Garden, Stane Street, Billingshurst, West Sussex, RH14 9AB, Monday to Friday between 9.30am and 12.30pm and 2.00pm and 4.00pm. **Collection of lots is strictly by prior appointment and must be arranged at least 48 hours in advance.** If Lots have not been collected within 35 days of the auction date then storage charges may be applied at a rate of £10 per Lot per day. Buyers are reminded that liability for loss and damage transfers to the buyer from the fall of the hammer. Whilst the majority of lots will remain in their location until collected, Summers Place Auctions accept no responsibility for any damage which may occur, even in the event of Summers Place Auction staff assisting carriers during collection.

Summers Place Auctions also reserves the right to charge storage fees of £10.00 per lot, per week, for any pieces left at Summers Place over a longer period than six months irrespective of whether they have been entered into a sale or not.

### Shipping

We are happy to arrange shipping quotations and have extensive experience in working in conjunction with leading domestic and international shippers. There is no charge for arranging quotations.

## CONDITIONS OF BUSINESS FOR BUYERS

### 1. INTRODUCTION

(a) The contractual relationship of Summers Place Auctions Ltd and Sellers with prospective Buyers is governed by:-

- (i) these Conditions of Business for Buyers;
- (ii) the Conditions of Business for Sellers displayed in the saleroom and available from Summers Place Auctions Ltd
- (iii) Summers Place Auctions Ltd 's Authenticity Guarantee; (iv) any additional notices and terms printed in the sale catalogue, in each case as amended by any saleroom notice or auctioneer's announcement.

(b) As auctioneer, Summers Place Auctions Ltd acts as agent for the Seller. Occasionally, Summers Place Auctions Ltd may own or have a financial interest in a lot.

## 2. DEFINITIONS

“Bidder” is any person making, attempting or considering making a bid, including Buyers; “Buyer” is the person who makes the highest bid or offer accepted by the auctioneer, including a Buyer’s principal when bidding as agent;

“Seller” is the person offering a lot for sale, including their agent, or executors;

““Buyer’s Expenses” are any costs or expenses due to Summers Place Auctions Ltd from the Buyer;

“Buyer’s Premium” is the commission payable by the Buyer on the Hammer Price or winning sealed bid price at the rates set out in the Guide for Prospective Buyers;

“Hammer Price” is the highest bid for the Property accepted by the auctioneer at the auction or the post auction sale price; “Purchase Price” is the Hammer Price plus applicable Buyer’s Premium and Buyer’s Expenses;

“Reserve Price” (where applicable) is the minimum Hammer Price at which the Seller has agreed to sell a lot.

The Buyer’s Premium, Buyer’s Expenses and Hammer Price are subject to VAT, where applicable.

## 3. EXAMINATION OF LOTS

(a) Summers Place Auctions Ltd knowledge of lots is partly dependent on information provided by the Seller and Summers Place Auctions Ltd is unable to exercise exhaustive due diligence on each lot. Each lot is available for examination before sale. Bidders are responsible for carrying out examinations and research before sale to satisfy themselves over the condition of lots and accuracy of descriptions.

(b) All oral and/or written information provided to Bidders relating to lots, including descriptions in the catalogue, condition reports or elsewhere are statements of Summers Place Auctions Ltd opinion and not representations of fact. Estimates may not be relied on as a prediction of the selling price or value of the lot and may be revised from time to time at Summers Place Auctions Ltd absolute discretion.

4. EXCLUSIONS AND LIMITATIONS OF LIABILITY TO BUYERS (a) Summers Place Auctions Ltd shall refund the Purchase Price to the Buyer in circumstances where it deems that the lot is a Counterfeit, subject to the terms of Summers Place Auctions Ltd Authenticity Guarantee.

(b) Subject to Condition 4(a), neither Summers Place Auctions Ltd nor the Seller:-

(i) is liable for any errors or omissions in any oral or written information provided to Bidders by Summers Place Auctions Ltd, whether negligent or otherwise;

(ii) gives any guarantee or warranty to Bidders and any implied warranties and conditions are excluded (save in so far as such obligations cannot be excluded by English law), other than the express warranties given by the Seller to the Buyer (for which the Seller is solely responsible) under the Conditions of Business for Sellers;

(iii) accepts responsibility to Bidders for acts or omissions (whether negligent or otherwise) by Summers Place Auctions Ltd in connection with the conduct of auctions or for any matter relating to the sale of any lot.

(c) Without prejudice to Condition 4(b), any claim against Summers Place Auctions Ltd and/or the Seller by a Bidder is limited to the Purchase Price for the relevant lot. Neither Summers Place Auctions Ltd nor the Seller shall be liable for any indirect or consequential losses.

(d) Nothing in Condition 4 shall exclude or limit the liability of Summers Place Auctions Ltd or the Seller for death or personal injury caused by the negligent acts or omissions of Summers Place Auctions Ltd or the Seller.

## 5. BIDDING AT AUCTION

(a) Summers Place Auctions Ltd has absolute discretion to refuse admission to the auction. Before sale, Bidders must complete a Registration Form and supply such information and references as Summers Place Auctions Ltd requires. Bidders are personally liable for their bid and are jointly and severally liable with their principal, if bidding as agent (in which case Summers Place Auctions Ltd’s prior and express consent must be obtained).

(b) Summers Place Auctions Ltd advises Bidders to attend the auction, but Summers Place Auctions Ltd will endeavour to execute absentee written bids provided that they are, in Summers Place Auctions Ltd’s opinion, received in sufficient time and in legible form.

(c) When available, written and telephone bidding is offered as a free service at the Bidder’s risk and subject to Summers Place Auctions Ltd’s other commitments; Summers Place Auctions Ltd is therefore not liable for failure to execute such bids. Telephone bidding may be recorded.

## 6. IMPORT, EXPORT AND COPYRIGHT RESTRICTIONS

Summers Place Auctions Ltd and the Seller make no representations or warranties as to whether any lot is subject to import, export or copyright restrictions. It is the Buyer's sole responsibility to obtain any copyright clearance or any necessary import, export or other licence required by law, including licenses required by law under the International Trade in Endangered Species (CITES).

## 7. CONDUCT OF THE AUCTION

(a) The auctioneer has discretion to refuse bids, withdraw or re-offer lots for sale (including after the fall of the hammer) if (s)he believes that there may be an error or dispute, and may also take such other action as (s)he reasonably deems necessary. (b) The auctioneer will commence and advance the bidding in such increments as (s)he considers appropriate and is entitled to place bids on the Seller's behalf up to the Reserve Price for the lot, where applicable.

(c) Subject to Condition 7(a), the contract between the Buyer and the Seller is concluded on the striking of the auctioneer's hammer.

(d) Any post-auction sale of lots shall incorporate these Conditions of Business.

## 8. PAYMENT AND COLLECTION

(a) Unless otherwise agreed in advance, payment of the Purchase Price is due in pounds sterling immediately after the auction (the "Payment Date").

(b) Title in a lot will not pass to the Buyer until Summers Place Auctions Ltd has received the Purchase Price in cleared funds. Summers Place Auctions Ltd will not release a lot to a Buyer before payment.

(c) The refusal of any licence or permit required by law, as outlined in Condition 6, shall not affect the Buyer's obligation to pay for the lot, as per Condition 8(a).

(d) The Buyer must arrange collection of lots within 35 working days of the auction. Purchased lots are at the Buyer's risk from the fall of the hammer.

(e) All packing and handling of lots is at the Buyer's risk. Summers Place Auctions Ltd will not be liable for any acts or omissions of third party removers or shippers.

## 9. REMEDIES FOR NON-PAYMENT

Without prejudice to any rights that the Seller may have, if the Buyer without prior agreement fails to make payment for the lot within 5 working days of the auction, Summers Place Auctions Ltd may in its sole discretion exercise one or more of the following remedies:-

(a) store the lot at its premises or elsewhere at the Buyer's sole risk and expense;

(b) cancel the sale of the lot;

(c) set off any amounts owed to the Buyer by Summers Place Auctions Ltd against any amounts owed to Summers Place Auctions Ltd by the Buyer for the lot;

(d) reject future bids from the Buyer;

(e) charge interest at 4% per annum above NatWest Bank Base Rate from the

Payment Date to the date that the Purchase Price is received in cleared funds;

(f) re-sell the lot by auction or privately, with estimates and reserves at Summers Place Auction Ltd.'s discretion, in which case the Buyer will be liable for any shortfall between the original Purchase Price and the amount achieved on re-sale, including all costs incurred in such re-sale;

(g) Exercise a lien over any Buyer's Property in Summers Place Auctions Ltd's possession, applying the sale proceeds to any amounts owed by the Buyer to Summers Place Auctions Ltd. Summers Place Auctions Ltd shall give the Buyer 14 days written notice before exercising such lien;

(h) commence legal proceedings to recover the Purchase Price for the lot, plus interest and legal costs;

(i) disclose the Buyer's details to the Seller to enable the Seller to commence legal proceedings.

## 10. FAILURE TO COLLECT PURCHASES

(a) If the Buyer pays the Purchase Price but does not collect the lot within 35 days of the auction, the lot will be stored at the Buyer's expense and risk at Summers Place Auctions Ltd's premises or in independent storage.



(b) If a lot is paid for but uncollected within 6 months of the auction, following 60 days written notice to the Buyer, Summers Place Auctions Ltd will re-sell the lot by auction or privately, with estimates and reserves at Summers Place Auctions Ltd's discretion. The sale proceeds, less all Summers Place Auctions Ltd's costs, will be forfeited unless collected by the Buyer within 2 years of the original auction.

## 11. DATA PROTECTION

(a) Summers Place Auctions Ltd will use information supplied by Bidders or otherwise obtained lawfully by Summers Place Auctions Ltd for the provision of auction related services, client administration, marketing and as otherwise required by law.

(b) By agreeing to these Conditions of Business, the Bidder agrees to the processing of their personal information and to the disclosure of such information to third parties world-wide for the purposes outlined in Condition 11(a) and to Sellers as per Condition 9(i).

## 12. MISCELLANEOUS

(a) All images of lots, catalogue descriptions and all other materials produced by Summers Place Auctions Ltd are the copyright of Summers Place Auctions Ltd.

(b) These Conditions of Business are not assignable by any Buyer without Summers Place Auctions Ltd's prior written consent, but are binding on Bidders' successors, assigns and representatives.

(c) The materials listed in Condition 1(a) set out the entire agreement between the parties.

(d) If any part of these Conditions of Business be held unenforceable, the remaining parts shall remain in full force and effect.

(e) These Conditions of Business shall be interpreted in accordance with English Law, under the exclusive jurisdiction of the English Courts, in favour of Summers Place Auctions Ltd.

**Sealed bid- How it works** Our sealed bid auctions close at 4.00pm on the day after the live auction, but are on view at the same time and are included in the same catalogue with an illustration, description and estimate. Clients wishing to leave bids should do so in writing or by emailing a signed scanned page detailing lot numbers, brief description and the bid(s) which they wish to leave. All clients should also have registered with us beforehand and provided photographic identification.

Sealed bids, when placed by telephone, are accepted only at the caller's risk and must be confirmed by letter or e-mail to [info@summersplaceauctions.com](mailto:info@summersplaceauctions.com). You can also e-mail the completed sealed bid form to [sealedbids@summersplaceauctions.com](mailto:sealedbids@summersplaceauctions.com)

Next give us your bid(s). This can be done by filling in the bidding slip found in your catalogue. If you are sending your bidding slip to Summers Place Auctions by post, please mark the envelope "Sealed Bid" so that we know it contains a sealed bid and do not open it accidentally. Bids and IDs may also be sent by e-mail. If you choose to send the bid electronically please email [sealedbids@summersplaceauctions.com](mailto:sealedbids@summersplaceauctions.com). This is a closed mailbox and will not be opened before the advertised time. However, we strongly recommend that if you have not viewed the sale in person, that you ask for condition reports on any lots you are thinking of leaving bids on.

Sealed bid auctions differ from established auctions in that the bid left is the bid that will be exercised in full. Therefore, if you decide to leave a bid of, say, £900 on the lot estimated at £800-1000 and there is no higher bid (where two identical bids are received, the earliest received bid will take precedence), £900 will secure the lot subject to buyer's premium and VAT on the premium.

We will contact you if you have been the successful bidder to inform you of the lot or lots that you have purchased, so that you can make payment and make arrangements for delivery. We have had many years of experience dealing with both UK carriers and international shippers and are happy to obtain quotations and facilitate transport and shipping of single lots and multiple purchases to anywhere in the world.

Bids will be opened on Thursday 20th May; and sales results will appear on the Summers Place Auctions website. Please be mindful that we will have to process a large number of bids, which does take time. However, we will endeavour to get this accomplished as quickly as possible and will expect to have the results of the sale posted by the end of the day.

If you have never bid in a sealed bid sale before, here are some things to be aware of as regards leaving bids for this auction:

Every lot in the sale has a fixed reserve, (the minimum price for which the lot can be sold) and this is never above the low estimate, it can be slightly below, but in the vast majority of cases it is the low estimate.

The highest bid (as long as it is on or above the reserve) will be the winning bid. This is the 'hammer price' that the lot will be sold for.

You should consider leaving a bid of an odd amount in pounds, for example, rather than bidding £1,000, try say £1,004, as many lots have been bought for the sake of the odd £1!

You can tailor your bid in ways that are impossible to do in a live auction. For example, if you really like three lots, but only need one, and the piece you like the most is later in the sale, simply mark your order of preference. As long as your instructions are clear, having looked at any other bids left on the lots, we will do our best to comply with your preferences.

In the event of two identically highest bids, the earliest bid received will take precedence.

An auction price is made up of different components; the winning bid is called the 'hammer price'; A commission, which is in addition to the 'hammer price' is payable to the auctioneers. This is known as the buyers premium, on which VAT is payable. Lots marked with ▲ are subject to Artist Resale Right (ARR), which is 4% of the "hammer price". All lots that have additional VAT are clearly marked in the catalogue with a †.



**SUMMERS PLACE  
AUCTIONS**



THE WALLED GARDEN  
SUMMERS PLACE  
BILLINGSHURST  
WEST SUSSEX  
RH14 9AB  
+44(0)1403 331 331

**[www.summersplaceauctions.com](http://www.summersplaceauctions.com)**