

1. * †A pair of carved limestone benches

modern
148cm long



£2000-4000

2. * †A pair of carved sandstone urns on pedestals

modern
120cm high



£1000-1500

3. * †A carved limestone bench

modern
160cm long



£800-1200

4. * †A carved limestone bench

modern
160cm long



£800-1200

5. * †A carved limestone bench

modern
150cm long



£1000-1500

6. * †A carved limestone bench

modern
150cm long



£1000-1500

7. * †A pair of copper bound square carved sandstone planters

modern
40cm high, 56cm square



£600-1000

8. * †A pair of carved sandstone planters

modern
51 cm high



£500-800

9. * †A pair of carved sandstone planters

modern
51cm high



£500-800

10. * †A carved limestone table,

modern
75cm high, 120cm diameter



£1000-1500

11. * †A pair of hexagonal carved sandstone planters

modern,
46cm high, 50cm wide



£600-1000

12. * †A pair of hexagonal carved sandstone planters

modern
46cm high, 50cm wide



£600-1000

13. * †A pair of carved sandstone urns on pedestals

modern
92cm high, 61cm diameter



£450-700

14. * †A pair of carved sandstone Compton scroll pot style urns

modern
44cm high, 61cm diameter



£600-1000

15. A substantial wrought iron gate

early 20th century
with side panel and upright
the gate 150cm high by 140cm wide, the panel 124cm wide



£200-400

16. A similar substantial wrought iron gate

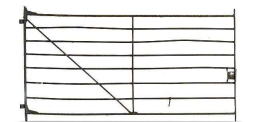
early 20th century
with side panel and upright
the gate 150cm high by 140cm wide, the panel 124cm wide



£200-400

17. A wrought iron estate gate

19th century
146cm high by 270cm long



£100-200

18. A wrought iron fence panel

early 20th century
130cm high



£200-300

18A. A carved Cotswold stone staddlestone

67cm high, together with a **carved sandstone mushroom group** and a **carved limestone relief carving of a stylised heart**, 49cm high



£150-250

19. A Portland stone bench

(*made up*) including Edwardian elements
143cm long



£300-500

20. A carved white marble bench

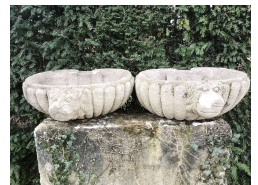
Italian, circa 1900
with later veined marble top
183cm long



£600-1000

21. A pair of carved stone basins

Indian, 2nd half 20th century
62cm high



£150-250

21A. A carved Cotswold stone D-shaped trough

34cm high by 90cm long by 72cm deep



£100-200

22. A composition stone urn

68cm high by 66cm diameter



£250-400

22A. A two tier carved sandstone rill cascade

each trough 20cm high by 107cm



£300-500

23. A collection of five composition stone planters

2nd half 20th century
with rusticated decoration
the largest 66cm wide



£200-300

23A. A carved sandstone corner trough

28cm high by 140cm long by 80cm deep



£80-120

24. A set of four rectangular terracotta planters

60cm long, together with a further pair of rectangular terracotta planters



£150-250

24A. A pair of large cast iron urns on pedestals

2nd half 19th century
126cm high, together with a pair of cast iron plinths, 58cm high



£1200-1800

25. After Van Nost: A lead figure of a kneeling North American Indian

modern
damages
100cm high

The original model supporting a sundial plate was commissioned for Hampton Court in 1701.



£400-600

26. **A pair of patinated fibreglass term figures representing Summer and Autumn**
modern, 145cm high, together with a **patinated fibreglass term figure representing Autumn**
modern, 146cm high



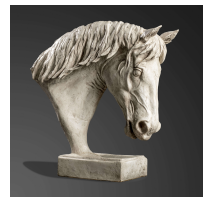
£500-800

- 26A. **A carved marble pedestal**
2nd half 20th century
94cm high



£40-60

27. **After Ben Panting: A plaster horse's head**
modern
inscribed Ben Panting
76cm high



£200-400

- 27A. **A carved rectangular trough**
20cm high by 56cm wide by 40cm deep, and **another carved stone trough**, 20cm high by 65cm wide by 39cm deep



£60-100

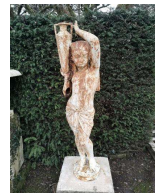
28. **A roughly hewn rectangular stone trough**
29cm high by 55cm wide by 50cm deep, together with **another rounded rectangular carved stone trough**, 22cm high by 62cm wide by 43cm deep, together with **a carved stone trough**, 32cm high by 59cm wide by 36cm deep
(plants not included)



£150-200

- 28A. **A Durenne foundry cast iron torchere figure of an Egyptian boy**
the base stamped
127cm high

Antoine Durenne set up in 1847 at Sommervoire Haute-Marne. He held a number of official posts most notably being on the installation committee for the Exposition Universelle in 1878. The Durenne foundry was incorporated into the Val d'Osne foundry in 1888. (See engraving)



£1000-1500

29. **A cast iron group of two dogs**

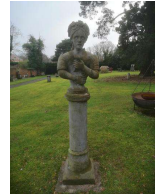
modern
70cm high by 87cm long



£600-1000

30. **An unusual carved Yorkstone bust of a girl with flowers on pedestal**

North Country, mid 19th century
194cm high



£500-800

31. **A simulated porphyry painted composition stone figure of Aurora**

modern, 175cm high together with a composition stone urn on pedestal,
2nd half 20th century, 128cm high



£100-200

32. **A set of four composition stone figures representing the Seasons**

late 20th century
145cm high



£1500-2000

33. **Nicholas Moreton (b1955) : Moses in the basket**

Ancester limestone with canvas awning
27cm high by 71cm long

The rope like appendage trailing down from the newly born child represents the umbilical cord



£100-200

34. **A carved stone tribal style mask corbel**

late 19th/early 20th century
43cm high, together with another tribal style carved stone figure 40cm high, and a composition stone poodle, 45cm high



£100-200

35. A composition stone classical bust on pedestal

modern

136cm high, together with **a similar classical bust on pedestal**, modern 136cm high

£100-150

36. After the Antique: A plaster bust of Hercules

92cm high

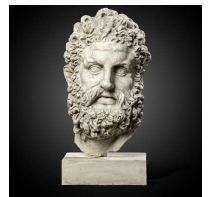


£500-800

37. After the Antique: A plaster bust of Hercules

modern

64cm high



£250-400

38. After the Antique: A plaster bust of Achilles

modern

90cm high

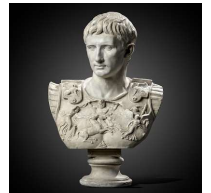


£300-500

39. After the Antique: A plaster bust of Julius Caesar

modern

77cm high



£300-500

40. After Ben Panting: A plaster horse's head

modern

inscribed *Ben Panting*

76cm high



£200-400

41. A wrought iron and zinc armillary on Louis XVth style composition stone base

late 19th/early 20th century
160cm high



£700-1000

41A. Sold on behalf of the Hogarth Trust
A pair of Jesmonite finials
 80cms high

These are copies of the lead originals given by the renowned Georgian actor David Garrick around 1750, to his great friend, the artist, William Hogarth, and used as gate pier finials at Hogarth's country house in Chiswick. The Hogarths had bought a house with a walled garden which was originally an orchard and the ancient mulberry survives there today. Hogarth had not owned a garden before so the pine cone on top of the urns and their garlands of fruit and flowers rather appropriately symbolise its future fruitfulness.



Now open to the public, the original lead finials have been moved inside and two pairs only were made in Jesmonite, one pair of which are now on the gate piers at Hogarth House, and this second pair, being sold on behalf of the Hogarth Trust.

£800-1200

42. Ann Vrielinck (Born 1966)

Arrange
Bronze
69cm high by 220cm wide by 70cm deep



£5000-7000

43. Back to Back

Bronze
Signed 'JP' and numbered
36cm high by 25.5cm wide by 8cm deep



£400-600

44. Bear

Bronze
28cm high by 23cm wide by 13cm deep



£80-120

44A. A little bronze elephant

71cm high



£400-600

45. Bicycle Wheel Wall Art

Reclaimed Bike Wheels
250cm long by 80cm wide by 8cm deep



£300-500

46. Blue sharks

Bronze on marble plinth
signed *Wyland 1999*
limited edition 202 of 300
25cm high, 33cm wide, 23cm deep,



£1000-1500

47. Christine Cummings

Polar Bear
Stoneware Ceramic Sculpture
Unique
33cm high by 40cm wide, 36cm deep



£400-600

48. David Cooke

Hare
Bronze
16cm high by 6cm wide by 7cm deep



£250-350

49. David Meredith

Large Dancing Frogs
Bronze
61cm high by 38cm wide by 25cm deep



£1200-1800

50. John Cox

Boxing Hares
Bronze with foundry stamp on a reclaimed oak base
72cm high by 70cm wide, 25cm deep



£800-1200

51.

Linda Frances

Running Hares
Signed Edition 7 of 125
20cm high, 34cm wide, 10cm deep



£600-800

52.

Long Legged Deer

Bronze
Unique
37cm high by 26cm wide by 14cm deep



£250-450

53.

Milo

Bang my Drum
Bronze
Signed 'Milo', Talos Gallery Stamp,
50cm high, by 20cm wide by 12cm deep



£1200-1800

54.

Ou se trouve le poisson 2

Lady M
Bronze on Wood
Unique
13cm high by 40cm wide by 30cm deep

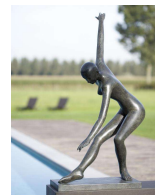


£800-1200

55.

Patricia Peeters, Born 1964

Divine
Bronze with green patina,
Signed and numbered from an edition of 150
107cm high



£1500-2500

56.

Running goose

Bronze
44.5cm high by 73cm wide by 22cm deep



£1000-1500

57. **Steve Boss**

Penguin Set (Waddle)

Bronze

Open

Largest 21cm high, 14.5cm wide, 15cm deep,



£500-600

58. **Ann Vrielinck****To Tweet**

Bronze

Signed and numbered from Edition of 49

98cm high by 98cm wide by 98cm deep



£6000-8000

59. **Women of the wind**

Bronze

46cm high by 32cm wide by 10cm deep



£800-1200

60. • **▲Helen Sinclair**

Rising for the Moon

Resin, with monogram and numbered XI of XV

180cm high



£800-1200

61. • **▲Helen Sinclair**

Still sitting

Resin, with monogram and numbers VIII of XV

190cm high

This lot comes with a certificate of authenticity from Helen Sinclair dated 2003.



£800-1200

62. **An impressive bronze unicorn head**

modern

variegated patina, mounted on iron base, from an edition of 5

143cm high

This recently cast model from an edition of 5 was taken from a Coadestone original which formed half of a Royal Coat of Arms armorial and would have originally had the coat of arms in the middle and a lion on the other side.



£4000-6000

63. A bronze rhinoceros

modern
on marble base
38cm long



£200-400

64. A set of four faux rattan Dedon planters

with yew topiary
the planter 90cm high



£200-400

65. A pair of faux rattan Dedon planters

with yew topiary
the planter 90cm high



£100-200

66. A terracotta storage jar

early 20th century
possibly by Compton, bearing two circular makers marks
82cm high

Although this model does not appear in the Compton catalogue it is similar in style to the Ali Baba pot. The two circular stamps could possibly be a Compton mark which was normally applied to the pot and quite often degrades over the years leaving a circular stamp with no discernible markings on it.



£150-250

67. A Victorian slate water butt

late 19th century
64cm high by 135cm wide by 51cm deep
(plants not included)



£200-300

68. A pair of unusual composition stone seated lion console tables

2nd half 20th century
with rectangular glass tops
115cm wide



£800-1200

68A. A stainless steel table

modern
with rectangular pink Balmoral granite top
137cm long by 58cm wide



£350-450

69. After Charles Wheeler

A resin figure of Spring
177cm high

Gerald Moore was a friend of Sir Charles Wheeler and the original bronze was gifted by Gerald Moore to his old school Eltham College and at that time this resin copy was made.

Sir Charles Wheeler KCVO CBE PRA 1892 -1974 was a painter and who exhibited regularly at the Royal Academy summer exhibition from 1914 to 1970. 'Spring' was shown at the 1930 summer exhibition. The model was Marguerite Kelsey who sat to Meredith Frampton in 1928. She holds a seed in her right hand symbolising her personification. Flowers bloom in relief on her feet and are indented on the rest of her body. Wheeler discovered the model at an evening sketch class and said that she brought spring into his studio when it was midwinter. Other sculptures by Wheeler include the Jellicoe Memorial Fountain in Trafalgar Square and figures on the Bank of England building. He was President of the Royal Academy 1956-66.



£1000-1500

70. Gerald Moore

A pair of Egyptian style seated cats
Resin
83cm high



£100-200

71. Gerald Moore

A composition urn with sprayed blue finish on column pedestal
127cm high, together with

Gerald Moore

Egyptian cat figure
Painted resin
167cm high



£200-400

72. A cast iron and wooden seat

late 19th century
210cm long, together with **an aluminium suite of furniture**



£80-120

73. **Gerald Moore**

Totem figure with applied cherubs
Painted fibreglass
170cm high together with

Gerald Moore

Agamemnon mask and helmet
Ciment fondu and cast iron
170cm high



£200-400

74. **Gerald Moore**

Calder style abstract
Painted sheet metal
195cm high



£80-120

75. **A collection of composition stone**

2nd half 20th century
including a pair of planters, an urn on pedestal, a pair of pedestals and a bird bath
the urn on pedestal, 84cm high



£100-200

76. **Gerald Moore**

Aphrodite
Bronze
Signed *Gerald Moore, 1996*, and foundry stamp *Burleighfield*
115cm high



£1000-1500

77. **Gerald Moore**

Abstract
Ciment fondu, brick and granite tiles
213cm high together with



£600-1000

78. **A collection of three sandstone column bases**

18th century
the tallest 74cm high



£200-400

79. Gerald Moore

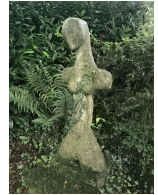
Abstract totem figure
Fibreglass resin
105cm high



£60-100

79A. Gerald Moore

Janus head
Ciment fondu
156cm high



£400-600

80. After Botticelli: A pair of composition stone figures of Venus on pedestals

20th century
120cm high, together with **a similar group**



£200-400

81. Heni-Horrible-Hine

Hippy Drogue
Painted mannequin on iron stand
Signed and dated 1972
147cm high



£60-100

81A. Gerald Moore

A resin dancing figure in the style of Charles Wheeler
195cm high

This variation on the Wheeler figure of Spring was made at the same time as a companion piece to the following lot.



£1500-2500

82.

Gerald Moore

Grate Expectations
Recycled metal including a grate and hooks
91cm high, together with

Gerald Moore

Memento Mori
20th century landscape with cow
54cm high, and

Gerald Moore

Somewhere over the Rainbow
Bronze, barbed wire and nails
On stone base
Titled
40cm high, and

Gerald Moore

A slate panel carved in relief with a figure on horseback
80cm high by 52cm wide



£100-200

83.

Rupert Gatfield (British, born 1959)

Orchid "Disyne"
Oil on linen
Inscribed on label on back
61cm square



£250-450

84.

Gerald Moore

Birdman
Oil on canvas
Signed with initials and dated '84
60cm by 48cm



£80-120

85.

Gerald Moore

Mediterranean harbour scene with moored boats
Oil on canvas
Signed and dated with initials '61
60cm by 50cm

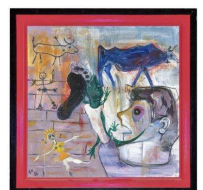


£100-200

85A.

Gerald Moore

Cave paintings and head
Initialled and dated '86
Oil on panel
60cm by 60cm



£200-400

86. **Gerald Moore**

Girl in sunlight
Greenwich Park
Signed and dated '84
Oil on canvas
91cm by 91cm



£100-200

86A. **Gerald Moore**

Fantasy with a naked girl and dragon
Oil on board
Signed and dated 8*
113cm by 132cm



£150-250

87. • **▲Eric Souster**

Still Life of Flowers in a Vase
Oil on canvas laid down
60cm by 50cm
together with
another still life by Souster
Landscape with Sun
56cm by 71cm



£80-120

88. • **▲David Shanahan**

The Procession Conspiracy
Oil on board
Signed *Shan*
78cm by 120cm



£400-600

89. **Gerald Moore**

Europa and the bull
Oil on canvas
Signed and dated '82
Titled and inscribed on reverse
79cm by 54cm



£100-200

90. • **▲David Shanahan**

In the Shadow of the Cross
Oil on board
Signed
53cm by 77cm



£150-250

91. • **▲Clifford Hall (British, 1904-1973)**

Girl sheltering under beach towel
Signed and dated '67
Oil on board
63.5cm by 92cm



£400-600

92. **Gerald Moore**

Women taking her dogs for a walk, Sussex
Oil on canvas
Signed and dated '92
64cm by 49cm

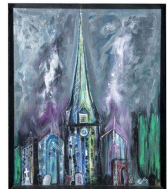


This picture painted 1992 which is the year before the Sotheby's sale of Heathfield Park which appears to appear in the background of this picture in a truncated form.

£100-200

93. **Gerald Moore**

Church Scene
Oil on canvas
Initialled and dated '89
90cm by 75cm



£80-120

94. **Gerald Moore**

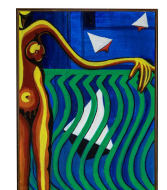
Woman and Cat
Signed and dated '83
Oil on canvas
75cm by 59cm



£100-200

95. **Gerald Moore**

Invitation to the Var
Initialled and dated '81
Oil on board
81cm by 60cm



£80-120

96. **Gerald Moore**

Walking the Dogs
Initialled and dated '92
Signed and titled on reverse
Oil on canvas
122cm by 76cm



£150-250

97. Gerald Moore

Self Portrait as a Cardinal called Marilyn
Initialed and dated '84
Oil on board
122cm by 107cm



£150-250

98. An amethyst geode with calcite crystals

Brazil
29cm by 27cm



£900-1200

99. A large fossilised wood branch section

Indonesia, Triassic
79cm



£1300-1800

100. A sodalite and specimen mineral veneered table

the top 60cm square



£550-750

101. A Pinolite disk

Austria
29cm diameter



£400-600

102. A large fossil wood egg

Madagascar, Triassic
20cm high



£400-500

103. A malachite freeform

Congo
14cm high



£300-400

104. An impressive amethyst and calcite specimen

Brazil
on metal stand
34cm wide



£550-750

105. A collection of six mineral spheres

including K" Cobra jasper and fossil wood
the largest 10cm diameter



£350-500

106. A collection of five mineral eggs

the largest 15cm high



£400-500

107. A red amethyst sphere

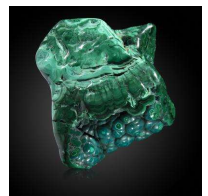
Brazil
on metal stand
16cm diameter



£700-900

108. A malachite freeform

Congo
20cm wide



£400-500

109. A large red amethyst bowl

36cm wide



£550-750

110. A moss agate freeform

32cm high



£650-850

111. An amethyst sphereIndia
on metal stand
15cm diameter

£550-750

112. An agate specimen

24cm high



£550-750

113. A labradorite specimenMadagascar
24cm high

£550-750

114. A cleoniceras ammoniteMadagascar
25cm

£550-750

115. A set of three graduated Agate slices on stands

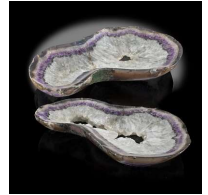
Brazil
39cm wide



£550-750

116. A set of two amethyst shallow bowls

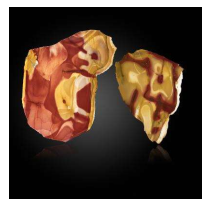
Brazil
each 39cm wide



£850-950

117. Two mookaite slices

Australia
the largest 26cm wide



£160-280

118. A large polished Phyloceras ammonite

Madagascar, Triassic
41cm



£1300-1500

119. A Preseli stone sphere

16cm diameter



£650-850

120. A primitive rhino (*Caenopus accidentalis*) skull

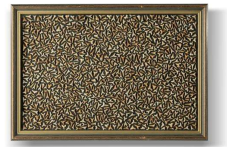
South Dakota, Eocene
51cm wide



£5500-7000

121. A fossilised sharks tooth display

in wall frame
85cm by 60cm



£700-900

122. A Campo di Cielo Meteorite

12cm



£2300-2700

123. A Massive polished quartz freeform

Madagascar
83cm, 240kg



£4500-6500

123A. A large fossil wood sphere

Indonesia
28cm diameter



£1200-1800

124. A unusual fossil wood branch

Burma, approx. 100 mya
84cm long



£550-800

125. An amethyst freeform on metal stand

Indonesia
28cm diameter



£1100-1600

125A. A large fossil Lepidodendrom wood sphere

Pensylvania, USA, Carboniferous,
18cm diameter

Lepidodendrom was one of the commonest trees in the abundant forests of the carboniferous period but it is extremely rare to find an example with such fine detail



£600-800

126. A set of three pink amethyst slices on metal stands

Brazil



£1200-1500

126A. A large mookaite slice

Australia
44cm wide



£600-800

127. A large fossil wood sphere

Indonesia
29cm diameter



£1200-1500

128. A very large Megalodon tooth

Indonesian Miocene
14.6cm on the diagonal on stand



£500-800

129. An unusually small Megalodon tooth

Indonesia, Miocene
7.2cm on the diagonal on stand



£200-400

130. A crocodylus Siamensis lower Jaw

Indonesia
on metal stand
86cm long



£2500-4000

131. A very large astroceras Stellare ammonite

Scunthorpe, Jurassic
43cm



£6000-10000

132. An extremely rare Hybodont skull Egertonodus Basandus

Hastings, Lower Cretaceous
20cm high by 23cm wide by 23cm deep

Hybodonts are an extinct group of sharks that flourished for hundreds of millions of years from the Devonian period to the late Cretaceous. This example came from Cretaceous deposits at Hastings and is unusual in that it is in a 3D preparation whereas most others occur flat.



£6000-10000

133. Ruth Moilliet

Allium
1m diameter



£1500-2000

134. A mummified cat

English, possibly Medieval
65cm by 41cm



£400-600

135. A Buzzard by Kirk of Glasgow

late 19th century
with label to rear
66cm high by 40cm wide

Kirk of Glasgow was a highly regarded taxidermist whose cases sometimes resemble those of Rowland Ward. They are always sought-after by those who collect antique taxidermy.



£400-600

136. A Red Legged Partridge by Spicer

early 20th century
with handwritten paper label to case
34cm high by 40cm wide

Spicer's cases are always of the very highest quality and are always in demand with collectors.



£200-300

137. A Stoat by Pratt and Sons of Brighton

early 20th century
label to rear
28cm high by 32cm wide



£200-300

137A. A Victorian mixed case of British birds

circa 1870
96cm high by 79cm wide



£400-600

138. An Icelandic Falcon by Chawkey

late 19th century
with label to rear
71cm high by 47cm wide



£400-600

139. A set of Caribou antlers on plaque

20th Century
91cm by 88cm



£250-400

140. A set of Pere David's deer antlers on shield

modern
115cm by 82cm



£200-300

141. A Mouflon rams head with large horns

modern
58cm high by 48cm wide



£250-400

142. A large replica crocodile

modern
29cm long



£400-600

143. A Barbary sheep

20th century
155cm high by 146cm wide



£600-800

144. A Mouflon Ram full mount on base

mid 20th century
113cm high

Provenance: Ex Lodder collection



£400-600

145. A Sardinian Ram

mid 20th century
87cm high

Provenance: Ex Lodder collection



£400-600

146. A Marlin trophy

modern
resin
260cm long



£400-600

147. Van Ingen: A Tiger skin

circa 1920/30s
293cm long



£2000-3000

148. A White tailed gnu wall mount

modern
53cm high by 70cm diameter



£300-500

149. Pashley of Norfolk: A case of three Razorbills

late 19th century
with label to rear
50cm high by 78cm wide

Provenance: Ex Connop collection



£400-500

150. A Triggerfish wall case

modern
47cm high by 72cm wide



£400-600

151. A full mount Brown Pelican

late 20th century
72cm high



£300-500

152. A large Sable antelope trophy on shield

modern
107cm high by 40cm diameter



£250-400

153. A pair of Rams head trophies on shields

modern
40cm high by 33cm diameter
(one showing)



£400-600

154. A Peacock wall mount

modern
120cm



£250-400

155. A white Peahen

modern
68cm high



£500-800

156. A massive Victorian dome of tropical birds

including a Cock of the rock, Paradise Tanager, Spangled cotinga and racket tailed drongo
81cm high



£3000-5000

157. A full mount hybrid goose

mid 20th century
62cm high



£100-200

158. A cased cuckoo

late 19th century
28cm high by 38cm wide



£80-120

159. A cased Muntjac deer

early 20th century
60cm by 71cm



£100-200

160. A case of Guillemots

late 19th century
54cm high by 71cm wide



£200-300

161. A case of a stoat reputedly by Ponchaud of Christchurch

circa 1900
27cm high by 40cm wide



£150-250

162. A dome of colourful tropical birds

late 19th century
66cm high



£500-700

163. Rowland Ward: A Reedbuck trophy on shield

label to verso with details *Northern Nigeria*
55cm high



£200-300

164. A large Pike in bow fronted case

Irish, Lough Erne, 1902
48cm high by 130cm wide



£800-1200

165. A collection of world butterflies

early 20th century
21cm high by 34cm wide



£80-120

166. A full mount Otter

early 20th century
78cm wide



£80-120

167. A collectors cabinet

made up from an early 20th century mahogany pot cupboard
82cm high by 59cm wide



£300-500

168. A collection of shells with data labels in specimen boxes

19th century



£150-250

169. A Monkey (*Golden bellied mangabey*) on bicycle

recent
44cm



£600-1000

170. A Dalmatian puppy on stand

modern
124cm overall



£800-900

171. Anthony Armistead: A Blue breasted kingfisher in wall case

recent
56cm high by 52cm wide



£300-500

172. A pair of lovebirds in glass dome

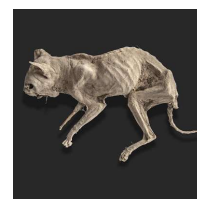
19th century
43cm high



£300-500

173. A mummified domestic cat

possibly Medieval
44cm long



£200-400

174. An impressive Lesser bird of Paradise in mirrored case

circa 1900
78cm high by 56cm wide



£2000-3000

175. A dome of two white winged cotingas

19th century
48cm high



£1500-2500

176. A white Rhea chick in glass dome

recent
50cm high



£600-1000

177. A dromedary camel full mount

2nd half 20th century
210cm high



£3000-4000

178. A Nile Lechwe full mount probably by Zimmerman of Nairobi

2nd half 19th century
135cm high by 167cm wide



£600-1000

179. A Ugandan Kob probably by Zimmerman of Nairobi

2nd half 19th century
160cm high by 175cm wide



£600-1000

180. An impressive case of two fighting cocks

circa 1980s
50cm high by 120cm wide



£400-600

181. A female Kirk's dik-dik

recent
28cm high



£150-250

182. Two Gerrard's kob head mounts on shields

circa 1900
the larger 74cm



£200-300

183. An albino Bennett's wallaby on stand

recent
77cm high by 104cm wide



£250-400

184. A Moose head mount

recent
120cm high by 113cm wide



£1500-2500

185. A full mount mute swan on stand

recent
115cm high



£400-600

186. A miniature full mount centaur

(made up)
57cm high



£2000-3000

187. An oval dome of four butterflies

modern
53cm high



£200-300

188. An oval dome of nine butterflies

modern
53cm high



£200-300

189. **A Red-flanked duiker head mount**

recent
35cm wide on shield



£150-250

190. **A wall mounted puma on a beam**

recent
140cm wide



£800-1200

191. **A full mount Honey Badger**

recent
80cm long



£600-1000

192. **A Siberian Ibex trophy**

20th century
85cm high by 55cm deep



£200-400

193. **An Antler chair**

2nd half 19th century
in the manner of Hans Rampendahl
89cm high

Provenance: Phillips Chester 2001, sold for £4,400. Rampendahl exhibited at the Great Exhibition and his designs inspired other furniture makers to produce similar antler furniture.



£1500-2500

194. **An unusual oak and horn stick stand**

Scottish, late 19th/early 20th century
190cm high

This unusual piece incorporating various ram horns and on the lower section the horns are drilled and would originally have held a chain to hold sticks in position.



£250-400

195. A lion skull

19th century
with wooden mount
36cm



£250-400

196. A large camel bone necklace

Congolese by repute



£100-200

197. A wallcase of crabs and starfish

modern
57cm high by 67cm wide



£400-600

198. A shell tower on stand

modern
76cm high



£300-400

199. Deyrolle, Paris: A collection of beetles

early 20th century
36cm high by 26cm wide



£200-300

200. A boxfish skeleton in glass case

18cm



£100-200

201. Two Mammoth molars

Pleistocene, North Sea
the largest 25cm



£200-300

202. A decorative display of Ostrich and Emu eggs on a platter

40cm diameter



£100-200

203. A wall case of crabs

recent
77cm high by 51cm wide



£500-900

204. A miniature Centaurs skeleton (made up)

modern
82cm high by 49cm wide



£5000-6000

205. A camel and zebra skull

recent
the camel 54cm wide; the zebra 49cm wide



£200-400

206. A large Cockerel skeleton in case

recent
58cm high



£200-300

207. A framed white regular and irregular sea urchins

white sea urchins, sand dollars and irregular urchins from around the world
the frame 50cm by 40cm by 5cm



£300-500

208. A framed composition of various uncommon green sea urchins

species from around the world
the frame 60cm by 40cm by 5cm



£600-1000

209. A framed composition of various uncommon purple sea urchins from around the world

the frame 50cm by 40cm by 5cm



£400-600

210. A framed composition of Victorian Dove shell (*Columbellidae*) collection

Originating from late Victorian missionary/reverend collector Bloch in original pill boxes with glass lids
the frame 40cm by 50cm by 5cm

Many specimens were obtained by self collecting and exchanging with contemporaries such as A.H. Cooke, Pallary, Verkruzen etc. From the era, specimens originate from remote areas and were highly sought after.



£500-800

211. A composition of various purple and green sea urchins on a sea weed background in glass dome

Unique composition of large green and purple tropical sea urchin species, and North Sea seaweed mounted in a large glass dome with a white grey-speckled marble base, the dome - rounded rectangular base 45cm by 22cm; total height 74cm

Originating from a late 19th/early 20th century French church collection.



£1000-2000

212. A large antique dome with composition green sea urchins as jellyfish with fish

comprising a jellyfish colony with reef fish composed out of sea urchins (*Mediterranean, Philippines*), venus basket glass sponge spicules (*Eplectella aspergillum*) and various dried aquarium fish mounted in a large glass dome with a hardwood base
71cm high, the base 37cm diameter

Originating from a late 19th century Belgium collection.



£1500-2500

Bids must be with us by 16.00 (BST) Wednesday 30th June



info@summersplaceauctions.com
+44 (0) 1403 331331